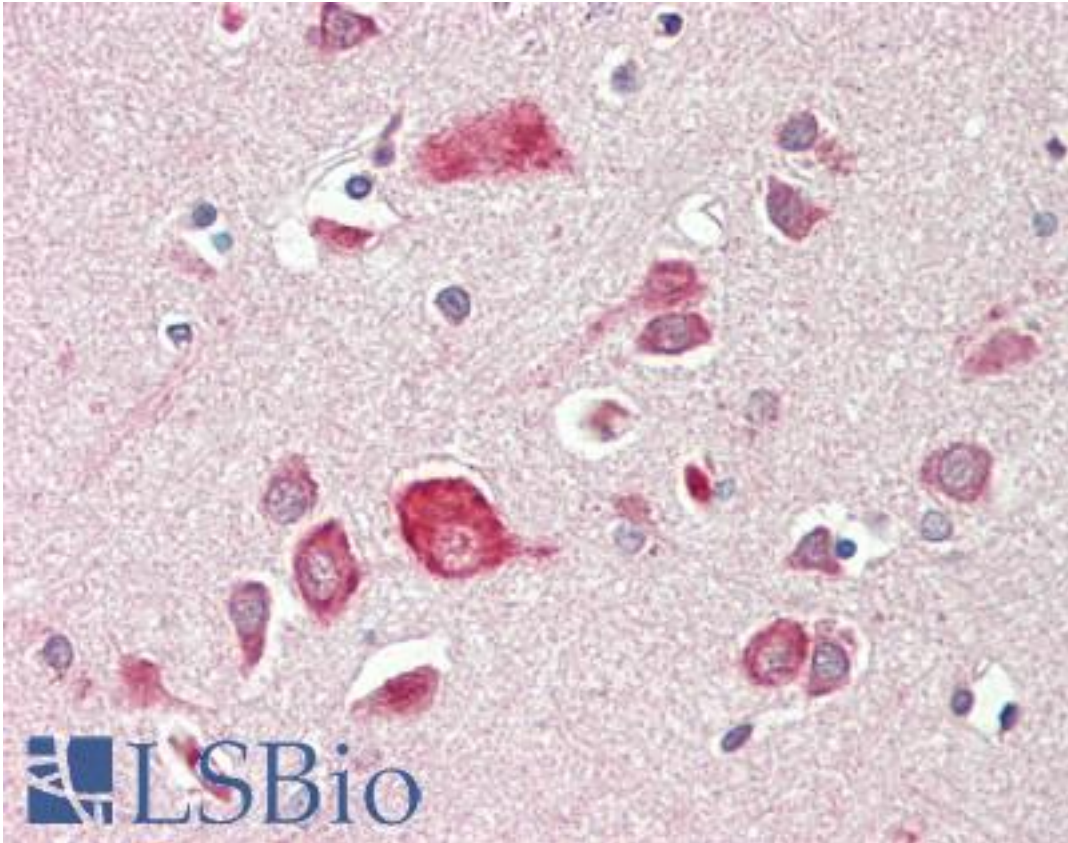


SYN / FYN Mouse anti-Human Monoclonal (2A10) Antibody - LS-B10736 - LSBio

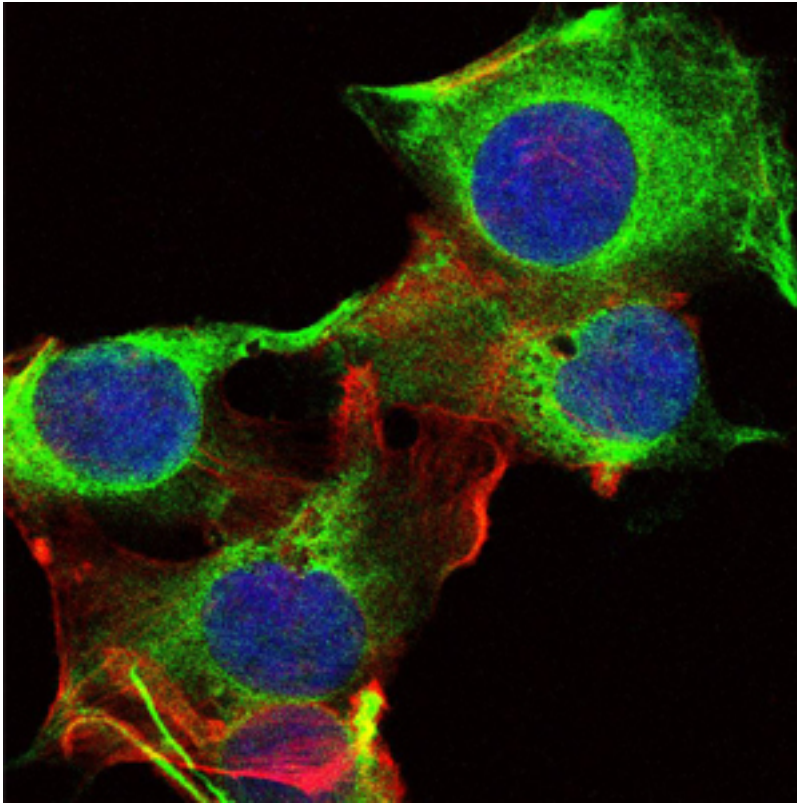
| | |
|-----------------------------|-------------------------------------------------------------------------------------------------------------------------------------------------------------------------------------------------------------------------------------------------------------------------------------------------------------------------------------------------------------|
| CatalogID: | LS-B10736 |
| Validation: | This antibody replaces catalog number LS-C169379. It has been validated for use in the following assays: IHC-P. |
| Target: | FYN oncogene related to SRC, FGR, YES |
| Synonyms: | FYN Antibody, C-syn protooncogene Antibody, Fyn kinase Antibody, Fyn tyrosine kinase Antibody, p59-FYN Antibody, SYN Antibody, Src-like kinase Antibody, Src/yes-related novel Antibody, Tyrosine kinase fyn Antibody, Tyrosine kinase p59fyn(T) Antibody, Tyrosine-protein kinase Fyn Antibody, Proto-oncogene c-Fyn Antibody, Proto-oncogene Syn Antibody |
| Family / Subfamily: | Protein Kinase / Src |
| Host | FYN antibody was produced in Mouse |
| Clonality: | Monoclonal |
| Isotype: | IgG1 |
| Clone Name: | 2A10 |
| Immunogen Species: | SYN / FYN antibody was raised against Human |
| Antigen Type: | Recombinant protein |
| Immunogen: | SYN / FYN antibody was raised against purified recombinant fragment of human FYN expressed in <i>E. coli</i> . |
| Specificity: | Human FYN |
| Reactivity: | Human |
| Purification: | Ascites |
| Presentation: | Ascites, 0.03% sodium azide |
| Recommended Storage: | Long term: -20°C; Short term: +4°C; Avoid freeze-thaw cycles. |
| Uses: | IHC - Paraffin (1:50), ICC (1:200 - 1:1000), Immunofluorescence (1:1000), Western blot (1:500 - 1:2000), Flow Cytometry (1:200 - 1:400), ELISA (1:10000) (Optimal dilution to be determined by the researcher) |
| Size: | 50 µl |

Immunohistochemistry Image:



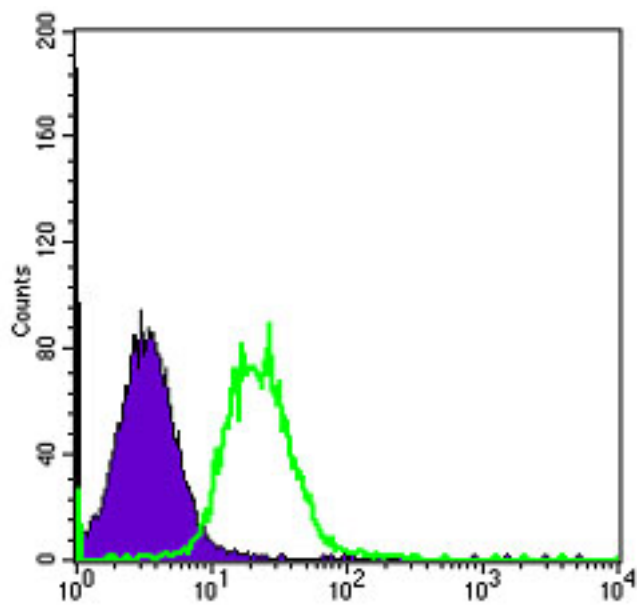
Human Brain, Cortex: Formalin-Fixed, Paraffin-Embedded (FFPE)

Immunofluorescence Image:



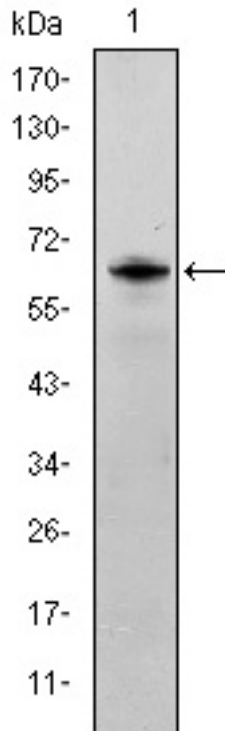
Immunofluorescence of U251 cells using FYN mouse mAb (green). Blue: DRAQ5 fluorescent DNA dye. Red: Actin filaments have been labeled with Alexa Fluor-555 phalloidin.

Flow Cytometry Image:



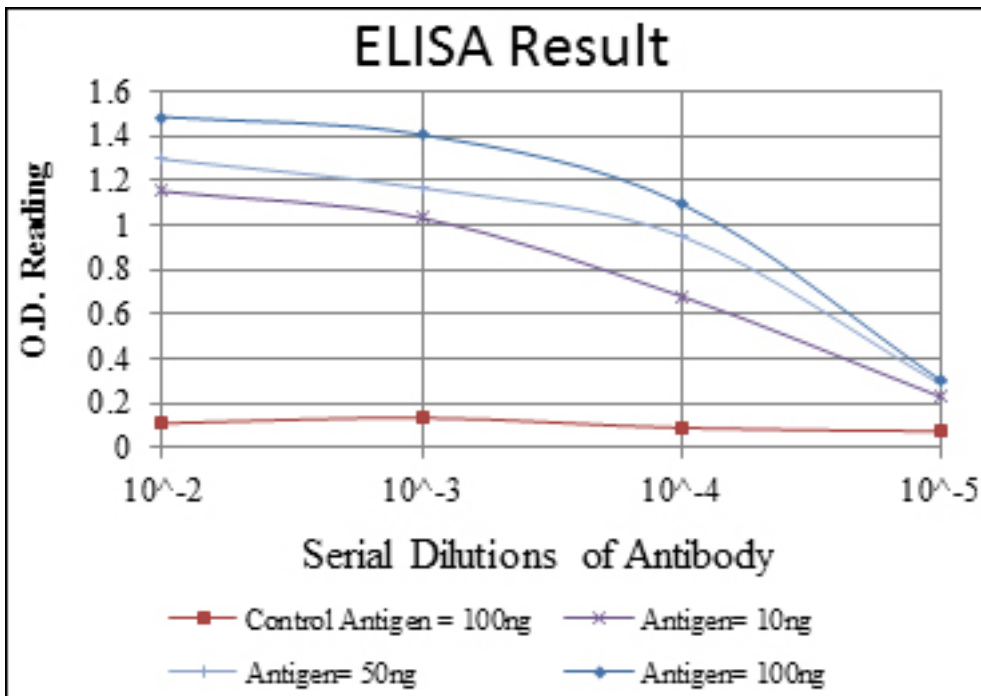
Flow cytometry of HeLa cells using FYN mouse mAb (green) and negative control (purple).

Western Blot Image:



Western blot of FYN mAb against human FYN (AA: 7-176) recombinant protein. (Expected MW is 44.3 kDa)

ELISA Image:



Red: Control Antigen (100ng); Purple: Antigen (10ng); Green: Antigen (50ng); Blue: Antigen (100ng);

| | |
|------------------------------------------------------------------------------|-------|
| Requested From: | Japan |
| Laboratory Reagent For In Vitro Research Use Only | |
| Not for resale without prior written consent from LifeSpan BioSciences, Inc. | |
| Created on 9/23/2014 | |
| © 2014 LifeSpan BioSciences | |