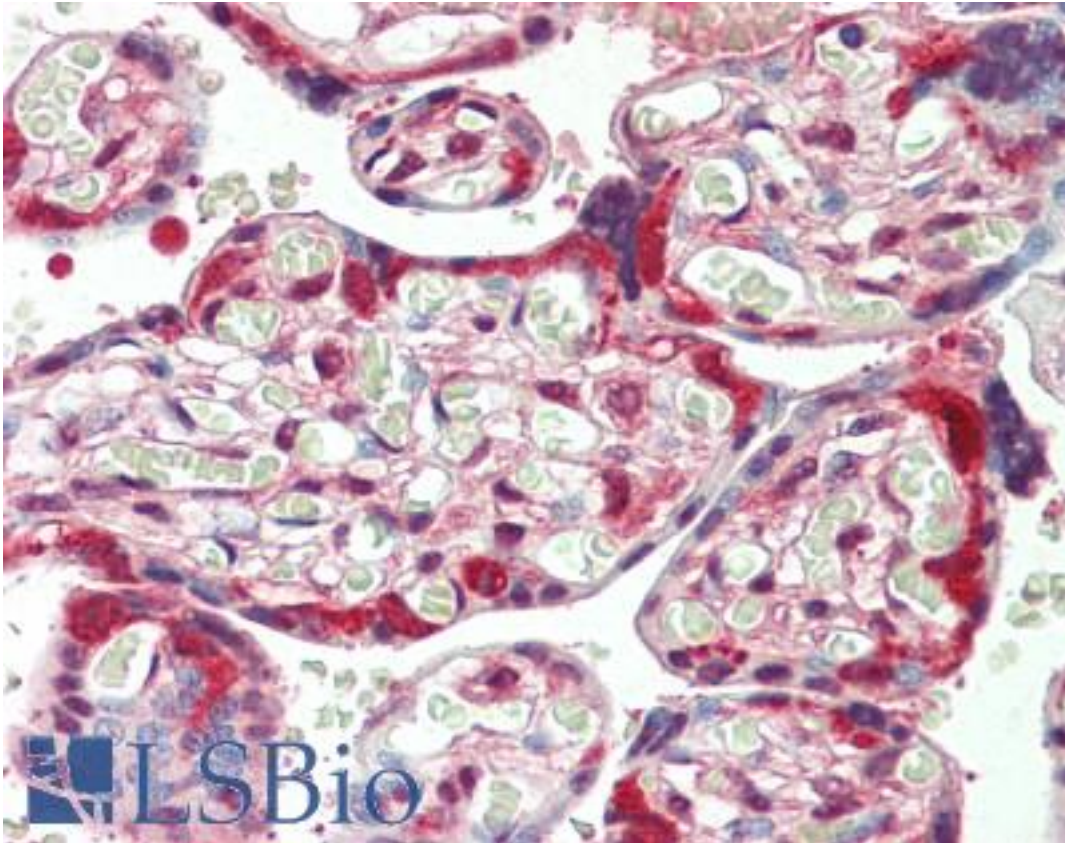


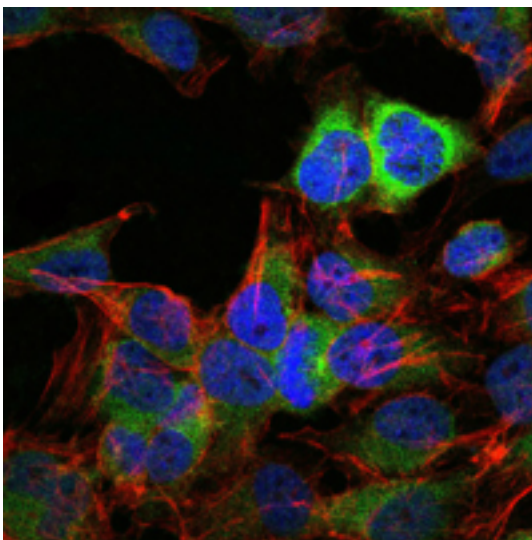
| HSP90AB1 / HSP90 Mouse anti-Human Monoclonal (5G4) Antibody - LS-B10733 - LSBio | |
|---|---|
| CatalogID: | LS-B10733 |
| Validation: | This antibody replaces catalog number LS-C169377. It has been validated for use in the following assays: IHC-P. |
| Target: | heat shock protein 90kDa alpha (cytosolic), class B member 1 (HSP90AB1) |
| Synonyms: | HSP90AB1 Antibody, D6S182 Antibody, Heat shock 84 kDa Antibody, Heat shock protein beta Antibody, Heat shock protein HSP 90-beta Antibody, HSP 84 Antibody, HSP84 Antibody, HSP 90 Antibody, HSP90-BETA Antibody, HSP90B Antibody, HSPC2 Antibody, HSPCB Antibody |
| Host | HSP90AB1 antibody was produced in Mouse |
| Clonality: | Monoclonal |
| Isotype: | IgG1 |
| Clone Name: | 5G4 |
| Immunogen Species: | HSP90AB1 / HSP90 antibody was raised against Human |
| Antigen Type: | Recombinant protein |
| Immunogen: | HSP90AB1 / HSP90 antibody was raised against purified recombinant fragment of human HSP90AB1 expressed in E. coli. |
| Specificity: | Human HSP 90 |
| Reactivity: | Human, Monkey, Mouse, Rat |
| Purification: | Ascites |
| Presentation: | Ascites, 0.03% sodium azide |
| Recommended Storage: | Long term: -20°C; Short term: +4°C; Avoid freeze-thaw cycles. |
| Uses: | IHC - Paraffin (1:50), ICC (1:200 - 1:1000), Immunofluorescence (1:1000), Western blot (1:500 - 1:2000), Flow Cytometry (1:200 - 1:400), ELISA (1:10000) (Optimal dilution to be determined by the researcher) |
| Size: | 50 µl |

Immunohistochemistry Image:



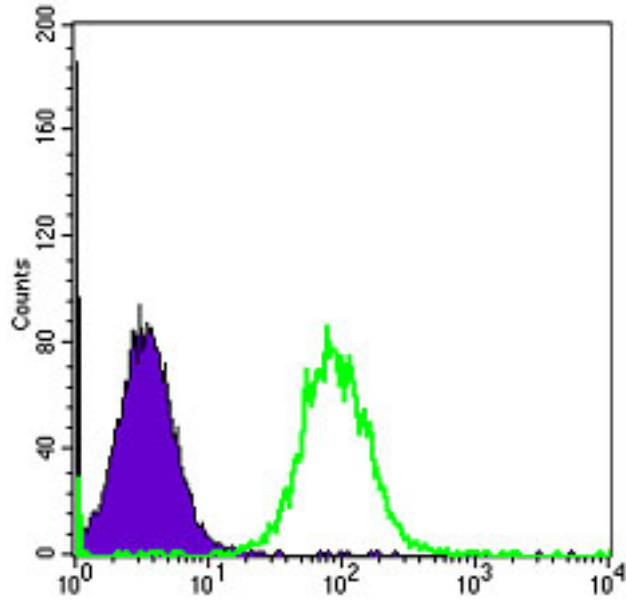
Human Placenta: Formalin-Fixed, Paraffin-Embedded (FFPE)

Immunofluorescence Image:



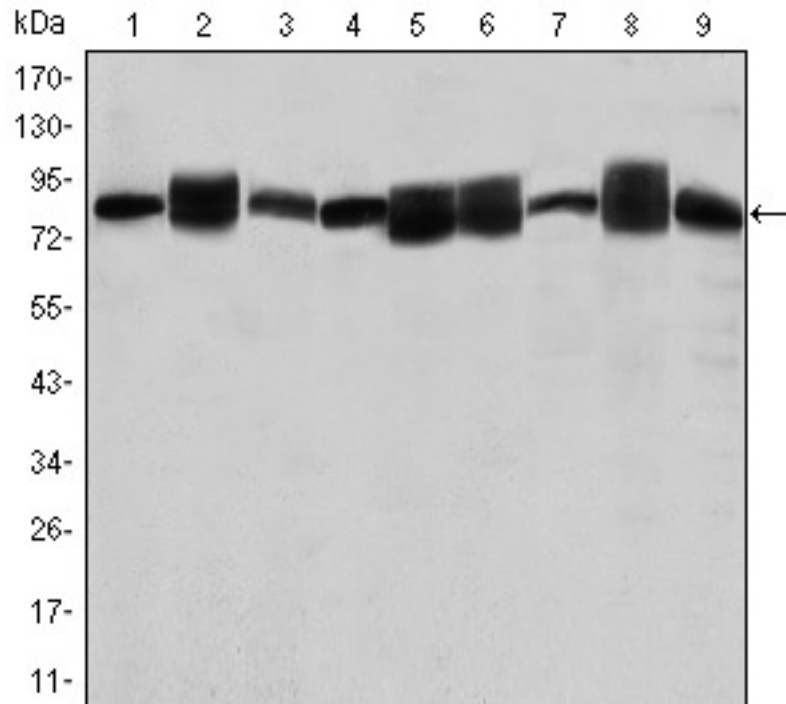
Immunofluorescence of HeLa cells using HSP90AB1 mouse mAb (green). Blue: DRAQ5 fluorescent DNA dye. Red: Actin filaments have been labeled with Alexa Fluor-555 phalloidin.

Flow Cytometry Image:



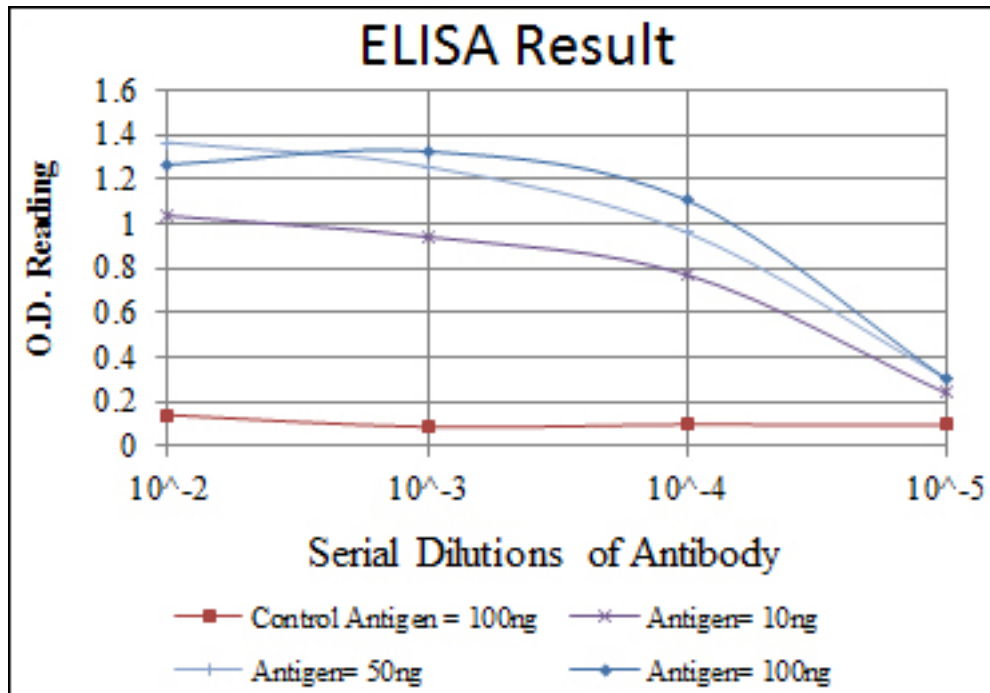
Flow cytometry of HeLa cells using HSP90AB1 mouse mAb (green) and negative control (purple).

Western Blot Image:



Western blot of HSP90AB1 mouse mAb against Jurkat (1), A431 (2), HeLa (3), A549 (4), HEK293 (5), K562 (6), NIH/3T3 (7), PC-12 (8) and Cos7 (9) cell lysate.

ELISA Image:



Red: Control Antigen (100ng); Purple: Antigen (10ng); Green: Antigen (50ng); Blue: Antigen (100ng);

Requested From:

Japan

Laboratory Reagent For In Vitro Research Use Only

Not for resale without prior written consent from LifeSpan BioSciences, Inc.

Created on 9/23/2014

© 2014 LifeSpan BioSciences