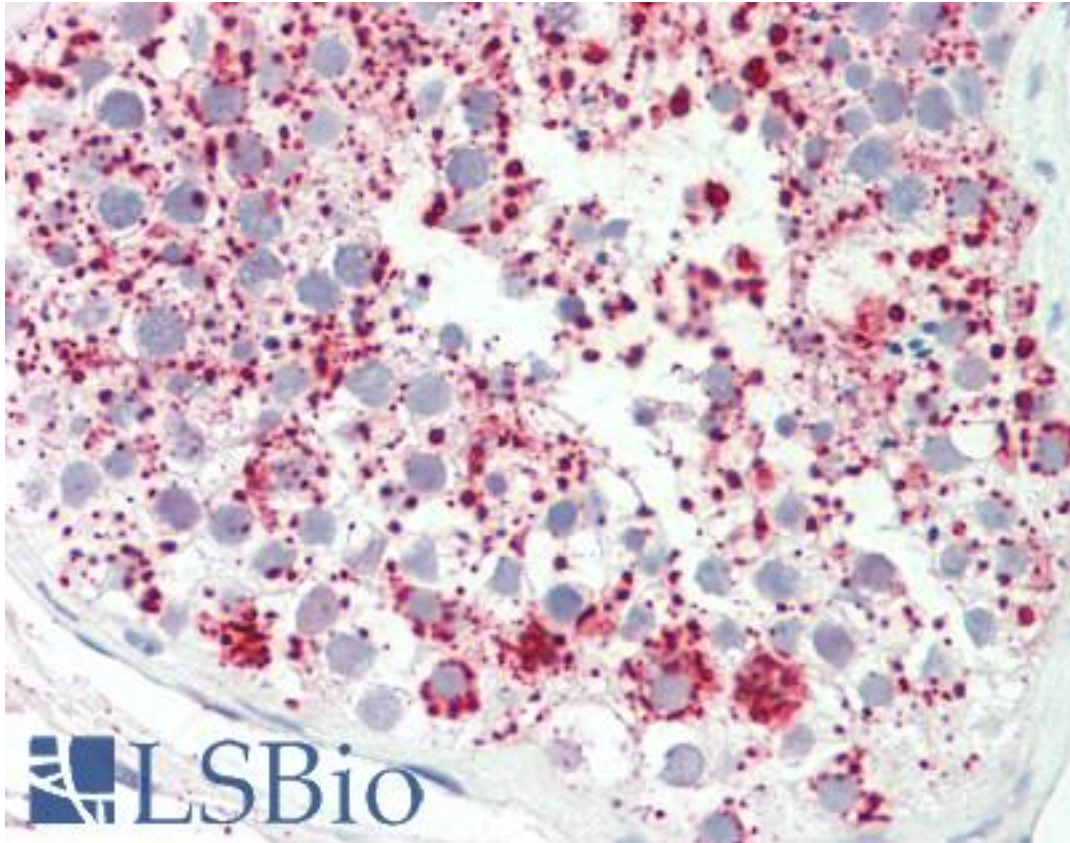


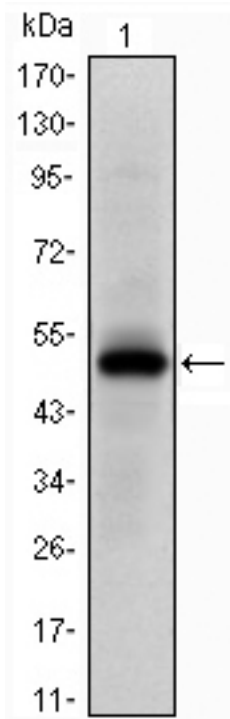
EPHA10 / EPH Receptor A10 Mouse anti-Human Monoclonal (2E8) Antibody - LS-B10732 - LSBio	
CatalogID:	LS-B10732
Validation:	This antibody replaces catalog number LS-C169358. It has been validated for use in the following assays: IHC-P.
Target:	EPH receptor A10 (EPHA10)
Synonyms:	EPHA10 Antibody, Ephrin type-A receptor 10 Antibody, EPH receptor A10 Antibody, EphA10s protein Antibody
Family / Subfamily:	Protein Kinase / Ephrin Receptor
Host	EPHA10 antibody was produced in Mouse
Clonality:	Monoclonal
Isotype:	IgG2a
Clone Name:	2E8
Immunogen Species:	EPHA10 / EPH Receptor A10 antibody was raised against Human
Antigen Type:	Recombinant protein
Immunogen:	EPHA10 / EPH Receptor A10 antibody was raised against purified recombinant fragment of human EphA10 expressed in E. coli.
Specificity:	Human EPHA10
Reactivity:	Human
Purification:	Ascites
Presentation:	Ascites, 0.03% sodium azide
Recommended Storage:	Long term: -20°C; Short term: +4°C; Avoid freeze-thaw cycles.
Uses:	IHC - Paraffin (1:50), Western blot (1:500 - 1:2000), ELISA (1:10000) (Optimal dilution to be determined by the researcher)
Size:	50 µl

Immunohistochemistry Image:



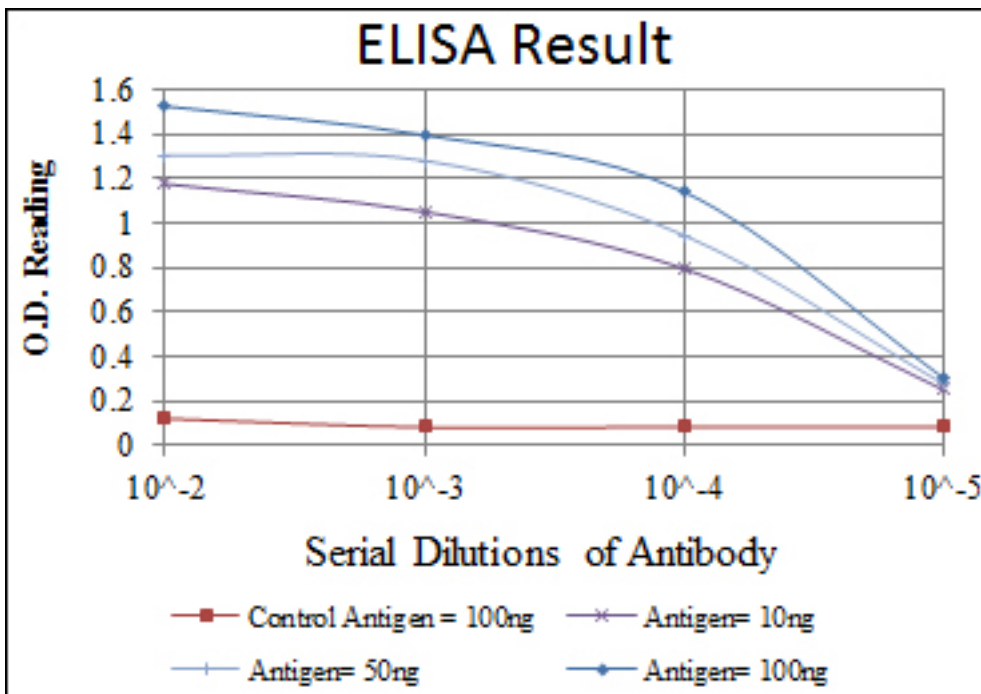
Human Testis: Formalin-Fixed, Paraffin-Embedded (FFPE)

Western Blot Image:



Western blot of Epha10 mAb against human Epha10 (AA: 34-295) recombinant protein. (Expected MW is 50 kDa)

ELISA Image:



Red: Control Antigen (100ng); Purple: Antigen (10ng); Green: Antigen (50ng); Blue: Antigen (100ng);

Requested From:

Japan

Laboratory Reagent For In Vitro Research Use Only

Not for resale without prior written consent from LifeSpan BioSciences, Inc.

Created on 9/23/2014

© 2014 LifeSpan BioSciences