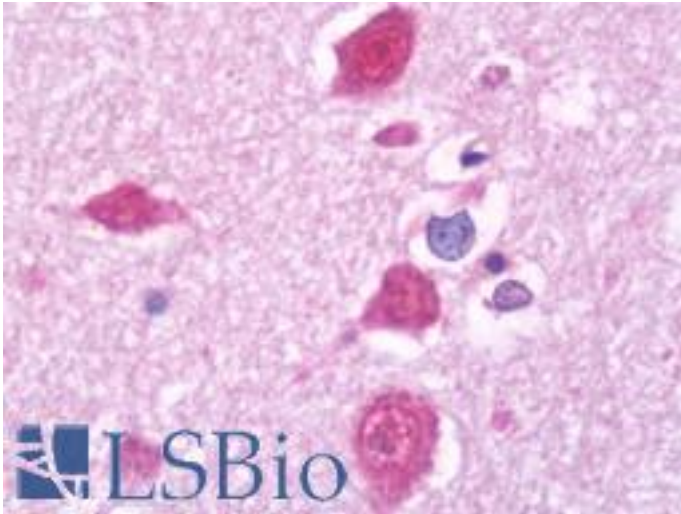


**SKP1 Mouse anti-Human Monoclonal (1H9) Antibody - LS-B10728 - LSBio**

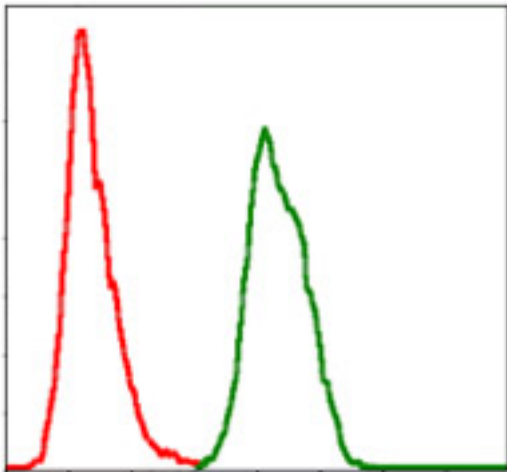
<b>CatalogID:</b>	LS-B10728
<b>Validation:</b>	This antibody replaces catalog number LS-C169464. It has been validated for use in the following assays: IHC-P.
<b>Target:</b>	S-phase kinase-associated protein 1 (SKP1)
<b>Synonyms:</b>	SKP1 Antibody, Cyclin A/CDK2-associated p19 Antibody, OCP-2 Antibody, OCP-II Antibody, Organ of Corti protein 2 Antibody, SIII Antibody, TCEB1L Antibody, Organ of Corti protein II Antibody, p19A Antibody, SKP1A Antibody, EMC19 Antibody, OCP2 Antibody, p19skp1 Antibody
<b>Host</b>	SKP1 antibody was produced in Mouse
<b>Clonality:</b>	Monoclonal
<b>Isotype:</b>	IgG1
<b>Clone Name:</b>	1H9
<b>Immunogen Species:</b>	SKP1 antibody was raised against Human
<b>Antigen Type:</b>	Recombinant protein
<b>Immunogen:</b>	SKP1 antibody was raised against purified recombinant fragment of human SKP1 expressed in <i>E. coli</i> .
<b>Specificity:</b>	Human SKP1
<b>Reactivity:</b>	Human
<b>Purification:</b>	Ascites
<b>Presentation:</b>	Ascites, 0.03% sodium azide
<b>Recommended Storage:</b>	Long term: -20°C; Short term: +4°C; Avoid freeze-thaw cycles.
<b>Uses:</b>	IHC - Paraffin (1:50), Western blot (1:500 - 1:2000), Flow Cytometry (1:200 - 1:400), ELISA (1:10000) (Optimal dilution to be determined by the researcher)
<b>Size:</b>	100 µl

**Immunohistochemistry Image:**



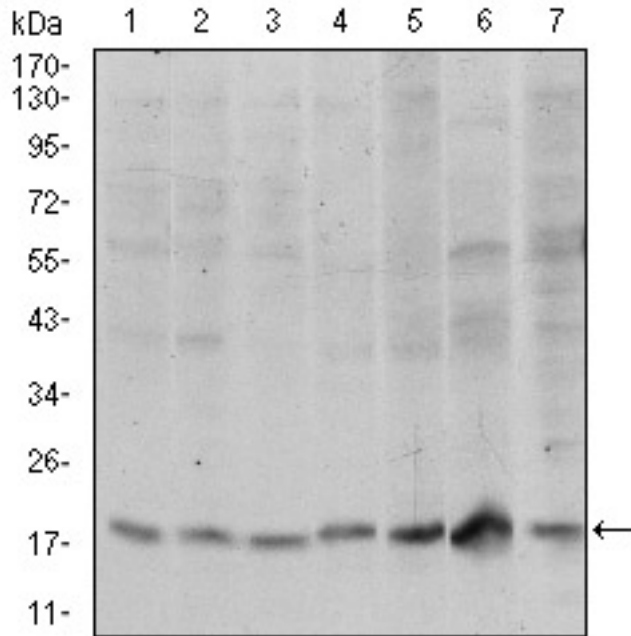
Human Brain, Cortex: Formalin-Fixed, Paraffin-Embedded (FFPE)

**Flow Cytometry Image:**



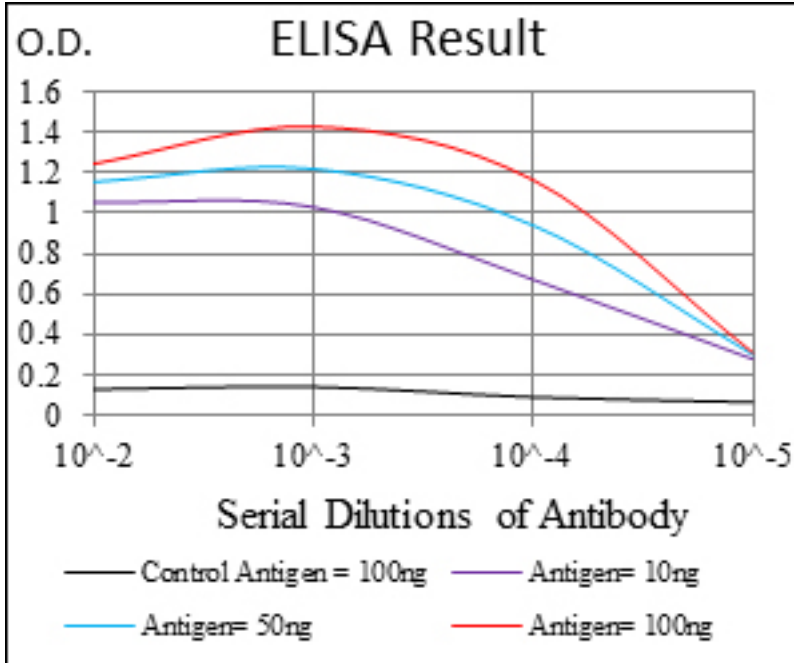
Flow cytometry of HeLa cells using SKP1 mouse mAb (green) and negative control (red).

**Western Blot Image:**



Western blot of SKP1 mouse mAb against HeLa (1), RAJI (2), Jurkat (3), MCF-7 (4), HepG2 (5), PC-12 (6) and Cos7 (7) cell lysate.

**ELISA Image:**



Red: Control Antigen (100ng); Purple: Antigen (10ng); Green: Antigen (50ng); Blue: Antigen (100ng);

Requested From:

Japan

Laboratory Reagent For In Vitro Research Use Only

Not for resale without prior written consent from LifeSpan BioSciences, Inc.

Created on 9/23/2014

© 2014 LifeSpan BioSciences