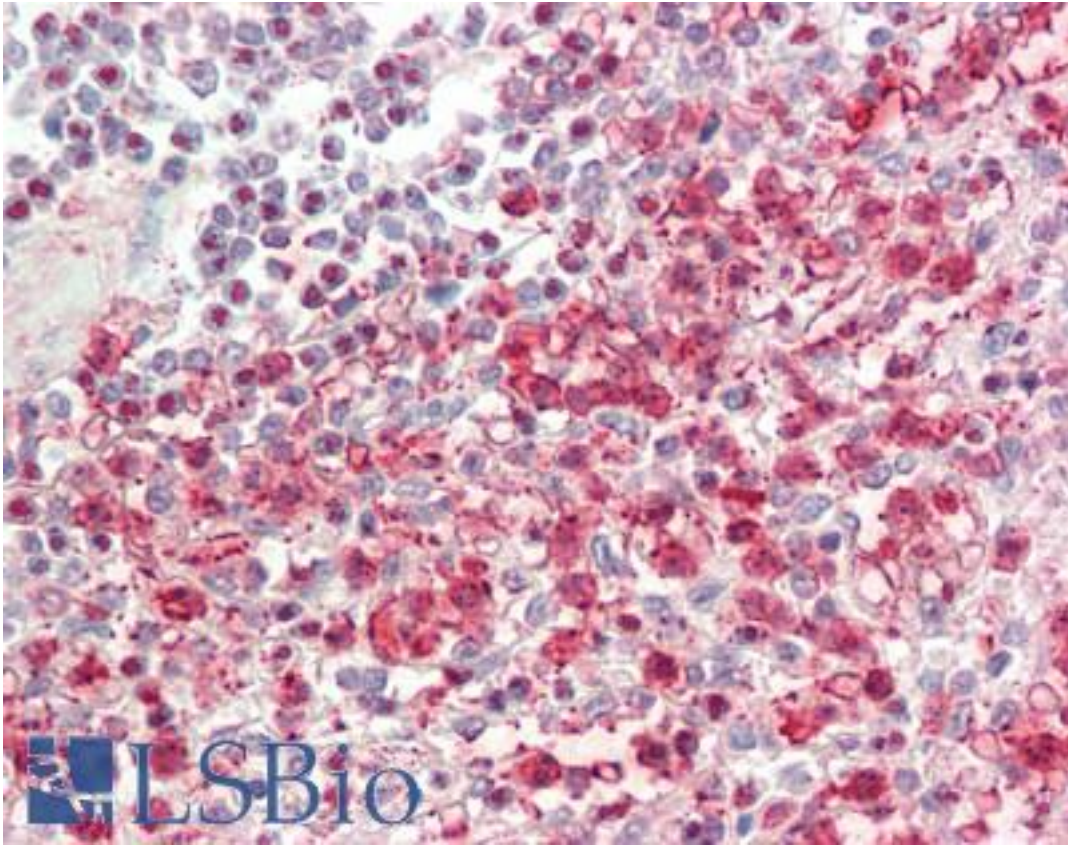


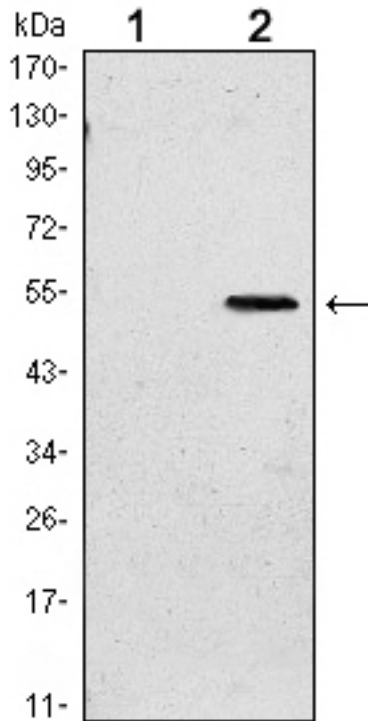
SUZ12 Mouse anti-Human Monoclonal (3D10) Antibody - LS-B10727 - LSBio	
CatalogID:	LS-B10727
Validation:	This antibody replaces catalog number LS-C169293. It has been validated for use in the following assays: IHC-P.
Target:	SUZ12 polycomb repressive complex 2 subunit
Synonyms:	SUZ12 Antibody, ChET 9 protein Antibody, Joined to JAZF1 protein Antibody, CHET9 Antibody, JJAZ1 Antibody, KIAA0160 Antibody, Polycomb protein SUZ12 Antibody
Host	SUZ12 antibody was produced in Mouse
Clonality:	Monoclonal
Isotype:	IgG1
Clone Name:	3D10
Immunogen Species:	SUZ12 antibody was raised against Human
Antigen Type:	Recombinant protein
Immunogen:	SUZ12 antibody was raised against purified recombinant fragment of human SUZ12 expressed in E. coli.
Specificity:	Human SUZ12
Reactivity:	Human
Purification:	Ascites
Presentation:	Ascites, 0.03% sodium azide
Recommended Storage:	Long term: -20°C; Short term: +4°C; Avoid freeze-thaw cycles.
Uses:	IHC - Paraffin (1:100), Western blot (1:500 - 1:2000), ELISA (1:10000) (Optimal dilution to be determined by the researcher)
Size:	50 µl

Immunohistochemistry Image:



Human Spleen: Formalin-Fixed, Paraffin-Embedded (FFPE)

Western Blot Image:



Western blot of SUZ12 mAb against HEK293 (1) and SUZ12(AA: 533-739)-hIgGFc transfected HEK293 (2) cell lysate.

Requested From:

Japan

Laboratory Reagent For In Vitro Research Use Only

Not for resale without prior written consent from LifeSpan BioSciences, Inc.

Created on 9/23/2014

© 2014 LifeSpan BioSciences