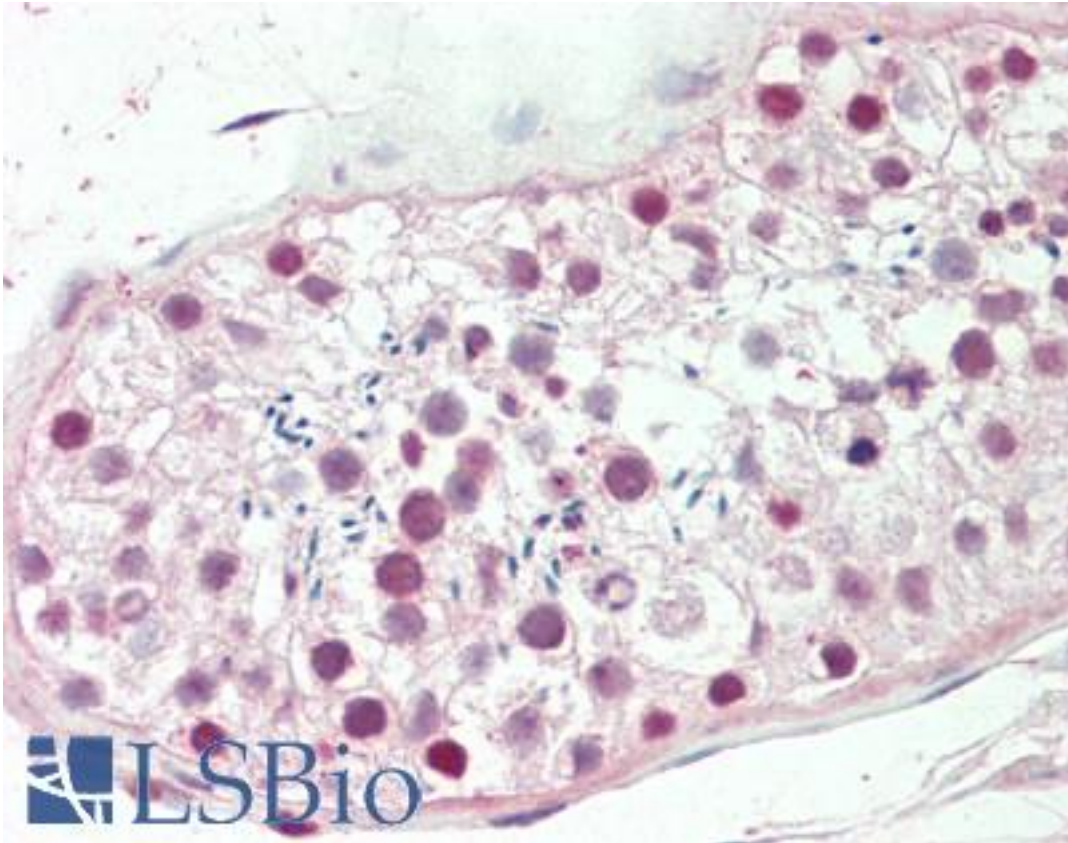


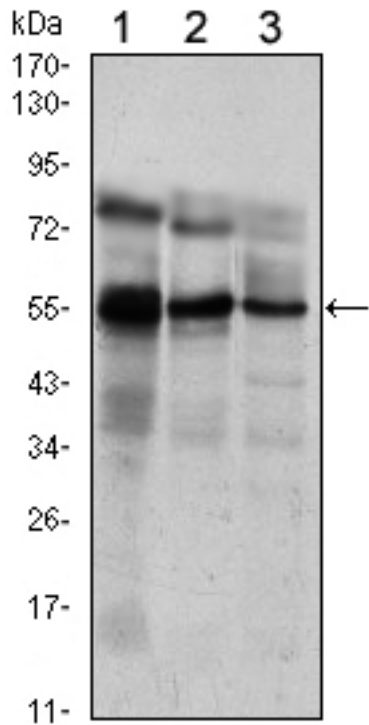
ETV5 / ERM Mouse anti-Human Monoclonal (3H3) Antibody - LS-B10724 - LSBio	
<b>CatalogID:</b>	LS-B10724
<b>Validation:</b>	This antibody replaces catalog number LS-C169206. It has been validated for use in the following assays: IHC-P.
<b>Target:</b>	ets variant 5 (ETV5)
<b>Synonyms:</b>	ETV5 Antibody, ETS translocation variant 5 Antibody, ERM Antibody, Ets variant 5 Antibody, Ets-related molecule Antibody, Ets-related protein ERM Antibody
<b>Host</b>	ETV5 antibody was produced in Mouse
<b>Clonality:</b>	Monoclonal
<b>Isotype:</b>	IgG1
<b>Clone Name:</b>	3H3
<b>Immunogen Species:</b>	ETV5 / ERM antibody was raised against Human
<b>Antigen Type:</b>	Recombinant protein
<b>Immunogen:</b>	ETV5 / ERM antibody was raised against purified recombinant fragment of human ETV5 expressed in <i>E. coli</i> .
<b>Specificity:</b>	Human ETV5 / ERM
<b>Reactivity:</b>	Human
<b>Purification:</b>	Ascites
<b>Presentation:</b>	Ascites, 0.03% sodium azide
<b>Recommended Storage:</b>	Long term: -20°C; Short term: +4°C; Avoid freeze-thaw cycles.
<b>Uses:</b>	IHC - Paraffin (1:50), Western blot (1:500 - 1:2000), ELISA (1:10000) (Optimal dilution to be determined by the researcher)
<b>Size:</b>	50 µl

**Immunohistochemistry Image:**



Human Testis: Formalin-Fixed, Paraffin-Embedded (FFPE)

**Western Blot Image:**



Western blot of ETV5 mouse mAb against Jurkat (1), NIH/3T3 (2) and MCF-7 (3) cell lysate.

**Requested From:**

Japan

Laboratory Reagent For In Vitro Research Use Only

Not for resale without prior written consent from LifeSpan BioSciences, Inc.

Created on 9/23/2014

© 2014 LifeSpan BioSciences