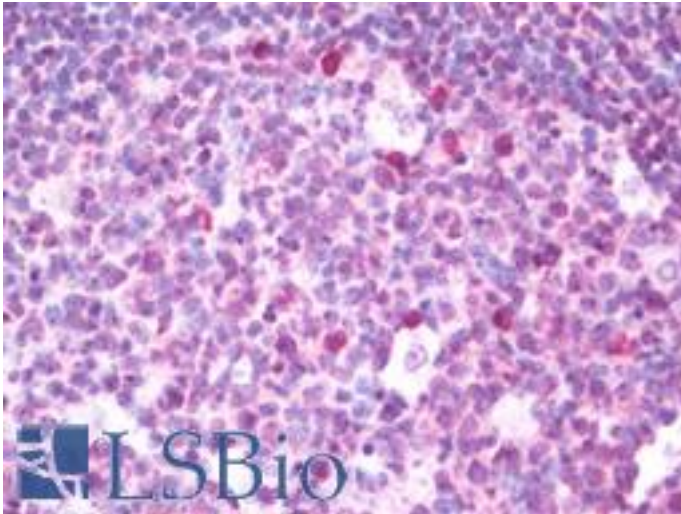


ETS2 Rabbit anti-Human Polyclonal (aa146-173) Antibody - LS-B10720 - LSBio

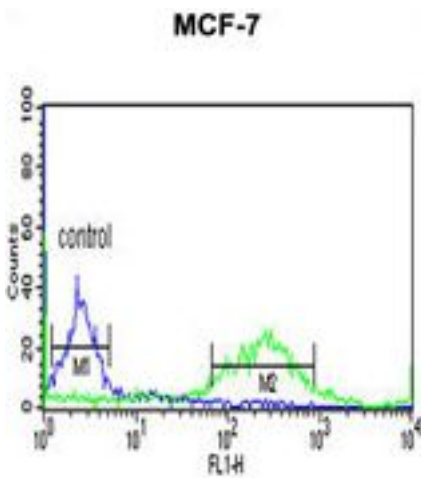
CatalogID:	LS-B10720
Validation:	This antibody replaces catalog number LS-C167844. It has been validated for use in the following assays: IHC-P.
Target:	v-ets avian erythroblastosis virus E26 oncogene homolog 2 (ETS2)
Synonyms:	ETS2 Antibody, c-ets2 Antibody, Oncogene ETS-2 Antibody, Protein C-ets-2 Antibody, ETS2IT1 Antibody
Host	ETS2 antibody was produced in Rabbit
Clonality:	Polyclonal
Immunogen Species:	ETS2 antibody was raised against Human
Antigen Type:	Synthetic peptide
Immunogen:	ETS2 antibody was raised against kLH-conjugated synthetic peptide from internal region of human ETS2.
Specificity:	Human ETS2
Epitope:	aa146-173
Reactivity:	Human
Purification:	Immunoaffinity purified
Presentation:	PBS, 0.09% sodium azide
Recommended Storage:	Maintain refrigerated at 2-8°C for up to 6 months. For long term storage store at -20°C.
Uses:	IHC - Paraffin (1:75), Western blot (1:1000), Flow Cytometry (1:10 - 1:50) (Optimal dilution to be determined by the researcher)
Size:	200 µl

Immunohistochemistry Image:



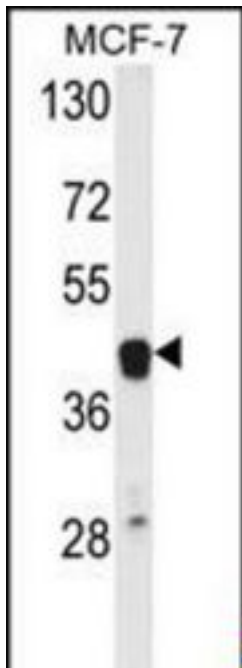
Human Tonsil: Formalin-Fixed, Paraffin-Embedded (FFPE)

Flow Cytometry Image:



ETS2 Antibody (Center) flow cytometry of MCF-7 cells (right histogram) compared to a negative control cell (left histogram). FITC-conjugated goat-anti-rabbit secondary antibodies were used for the analysis.

Western Blot Image:



Western blot of ETS2 Antibody (Center) in MCF-7 cell line lysates (35 ug/lane). ETS2 (arrow) was detected using the purified Pab.

Requested From:

Japan

Laboratory Reagent For In Vitro Research Use Only

Not for resale without prior written consent from LifeSpan BioSciences, Inc.

Created on 9/23/2014

© 2014 LifeSpan BioSciences