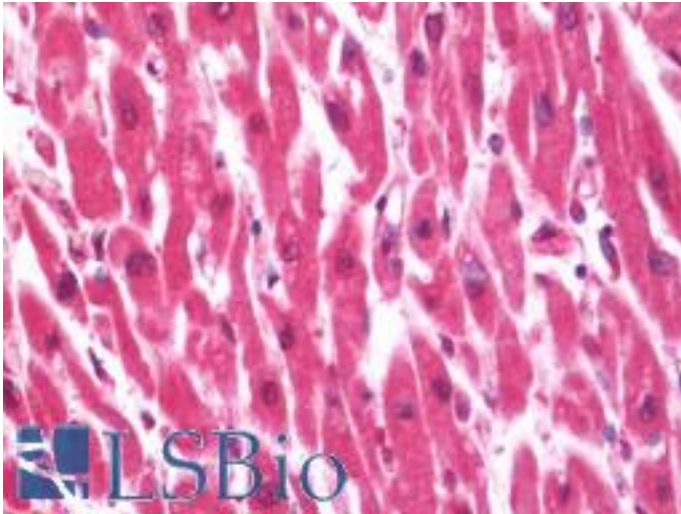


PRUNE Rabbit anti-Human Polyclonal (aa360-389) Antibody - LS-B10719 - LSBio

CatalogID:	LS-B10719
Validation:	This antibody replaces catalog number LS-C162202. It has been validated for use in the following assays: IHC-P.
Target:	prune exopolyphosphatase
Synonyms:	PRUNE Antibody, BMCC1 Antibody, HPrune Antibody, HTCD37 Antibody, KIAA0367 Antibody, Protein prune homolog Antibody, Prune homolog (Drosophila) Antibody, DRES-17 Antibody, DRES17 Antibody
Host	PRUNE antibody was produced in Rabbit
Clonality:	Polyclonal
Immunogen Species:	PRUNE antibody was raised against Human
Antigen Type:	Synthetic peptide
Immunogen:	PRUNE antibody was raised against kLH-conjugated synthetic peptide from C-terminal region of human PRUNE.
Specificity:	Human PRUNE
Epitope:	aa360-389
Reactivity:	Human
Purification:	Immunoaffinity purified
Presentation:	PBS, 0.09% sodium azide
Recommended Storage:	Maintain refrigerated at 2-8°C for up to 6 months. For long term storage store at -20°C.
Uses:	IHC - Paraffin (1:75), Western blot (1:1000), Flow Cytometry (1:10 - 1:50) (Optimal dilution to be determined by the researcher)
Size:	200 µl

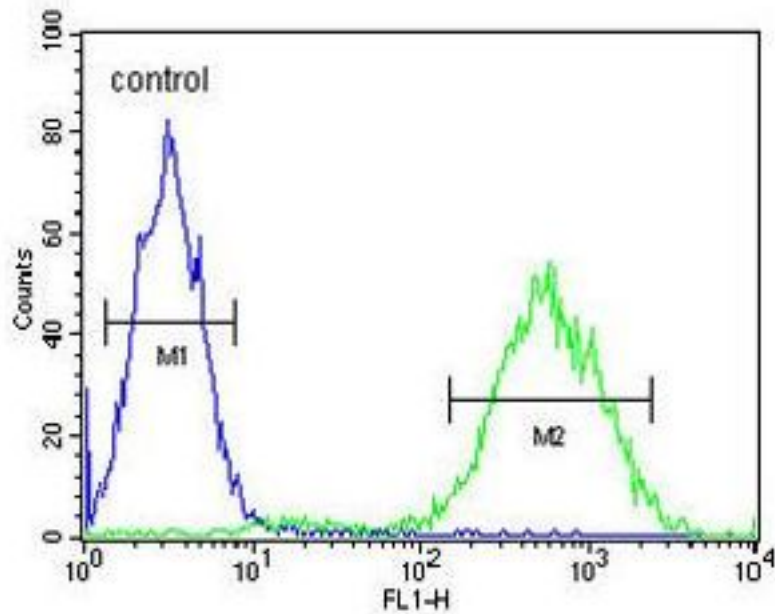
Immunohistochemistry Image:



Human Heart: Formalin-Fixed, Paraffin-Embedded (FFPE)

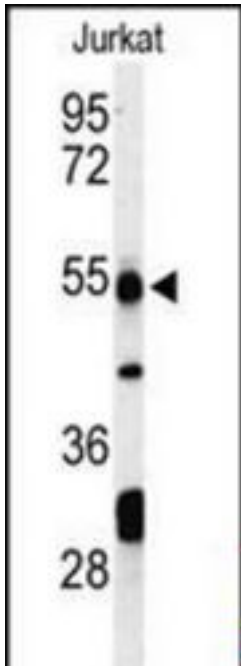
Flow Cytometry Image:

Jurkat



PRUNE Antibody (C-term) flow cytometry of Jurkat cells (right histogram) compared to a negative control cell (left histogram). FITC-conjugated goat-anti-rabbit secondary antibodies were used for the analysis.

Western Blot Image:



Western blot of PRUNE Antibody (C-term) in Jurkat cell line lysates (35 ug/lane). PRUNE (arrow) was detected using the purified Pab.

Requested From:

Japan

Laboratory Reagent For In Vitro Research Use Only

Not for resale without prior written consent from LifeSpan BioSciences, Inc.

Created on 9/23/2014

© 2014 LifeSpan BioSciences