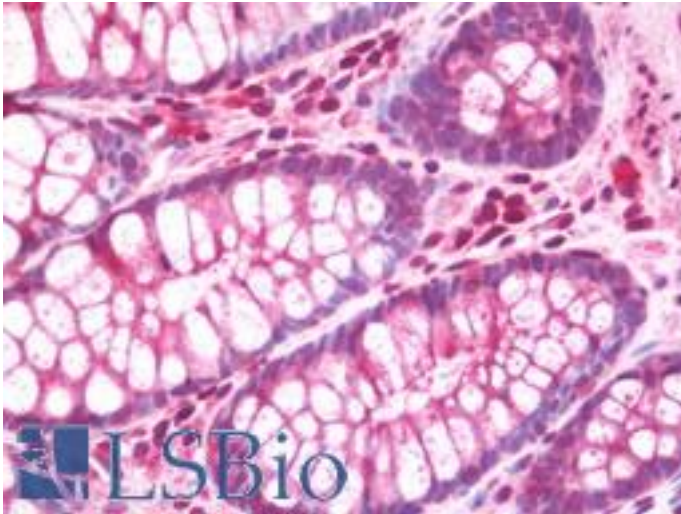


DIA / DIAPH2 Rabbit anti-Human Polyclonal (aa870-899) Antibody - LS-B10718 - LSBio

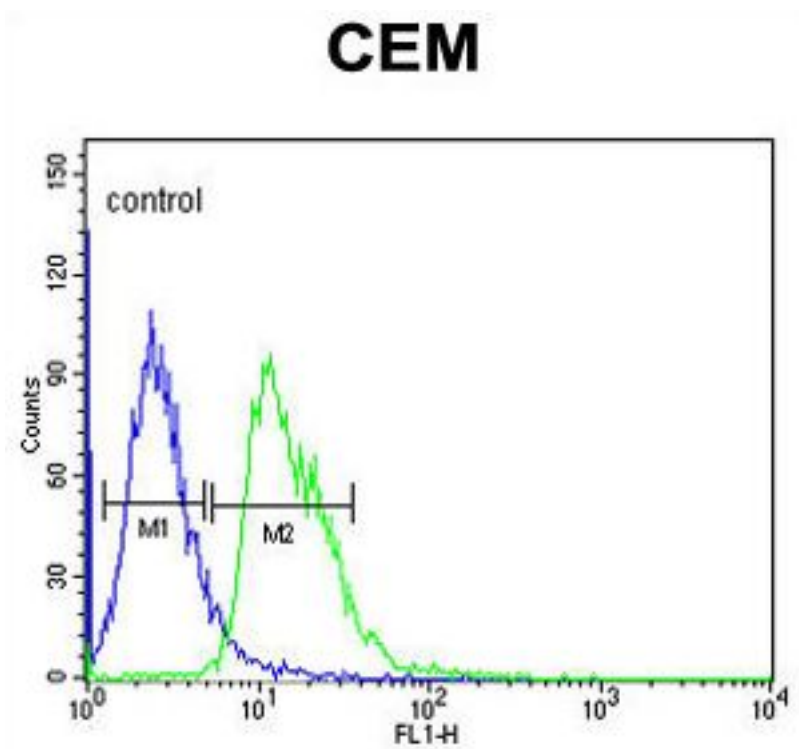
CatalogID:	LS-B10718
Validation:	This antibody replaces catalog number LS-C167412. It has been validated for use in the following assays: IHC-P.
Target:	diaphanous-related formin 2 (DIAPH2)
Synonyms:	DIAPH2 Antibody, DRF2 Antibody, DIA Antibody, DIA2 Antibody, POF Antibody, POF2 Antibody, Protein diaphanous homolog 2 Antibody, Diaphanous-related formin-2 Antibody, Diaphorase-2 Antibody
Host	DIAPH2 antibody was produced in Rabbit
Clonality:	Polyclonal
Immunogen Species:	DIA / DIAPH2 antibody was raised against Human
Antigen Type:	Synthetic peptide
Immunogen:	DIA / DIAPH2 antibody was raised against kLH-conjugated synthetic peptide from internal region of human DIAPH2.
Specificity:	Human DIA / DIAPH2
Epitope:	aa870-899
Reactivity:	Human
Purification:	Immunoaffinity purified
Presentation:	PBS, 0.09% sodium azide
Recommended Storage:	Maintain refrigerated at 2-8°C for up to 6 months. For long term storage store at -20°C.
Uses:	IHC - Paraffin (1:75), Western blot (1:1000), Flow Cytometry (1:10 - 1:50) (Optimal dilution to be determined by the researcher)
Size:	200 µl

Immunohistochemistry Image:



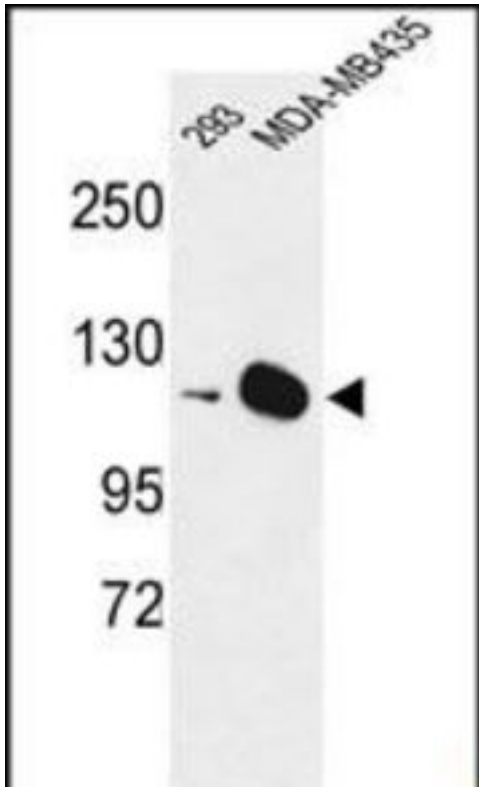
Human Colon: Formalin-Fixed, Paraffin-Embedded (FFPE)

Flow Cytometry Image:



DIAPH2 Antibody (Center) flow cytometry of CEM cells (right histogram) compared to a negative control cell (left histogram). FITC-conjugated goat-anti-rabbit secondary antibodies were used for the analysis.

Western Blot Image:



Western blot of DIAPH2 Antibody (Center) in 293, MDA-MB435 cell line lysates (35 ug/lane). DIAPH2 (arrow) was detected using the purified Pab.

Requested From:

Japan

Laboratory Reagent For In Vitro Research Use Only

Not for resale without prior written consent from LifeSpan BioSciences, Inc.

Created on 9/23/2014

© 2014 LifeSpan BioSciences