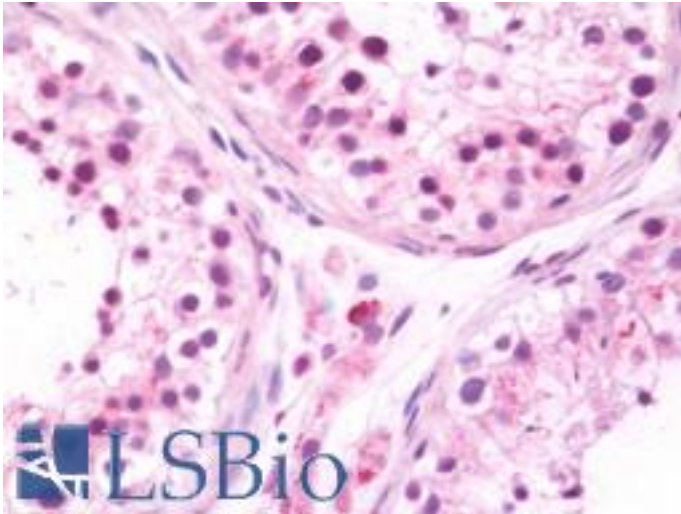


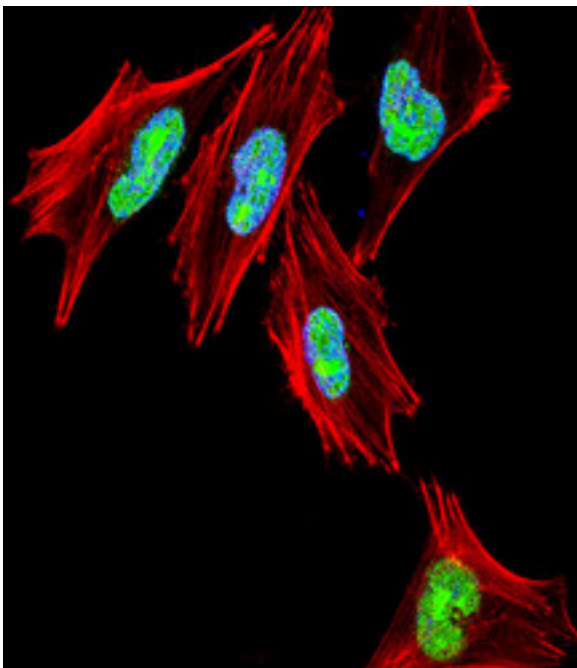
TBX1 / Brachyury Rabbit anti-Human Polyclonal (aa327-356) Antibody - LS-B10717 - LSBio	
<b>CatalogID:</b>	LS-B10717
<b>Validation:</b>	This antibody replaces catalog number LS-C161750. It has been validated for use in the following assays: IHC-P.
<b>Target:</b>	T-box 1 (TBX1)
<b>Synonyms:</b>	TBX1 Antibody, Brachyury Antibody, DGCR Antibody, DORV Antibody, DGS Antibody, T-box 1 Antibody, T-box 1 transcription factor C Antibody, TBX1C Antibody, TGA Antibody, CAFS Antibody, CTHM Antibody, T-box protein 1 Antibody, Testis-specific T-box protein Antibody, VCFS Antibody
<b>Host</b>	TBX1 antibody was produced in Rabbit
<b>Clonality:</b>	Polyclonal
<b>Immunogen Species:</b>	TBX1 / Brachyury antibody was raised against Human
<b>Antigen Type:</b>	Synthetic peptide
<b>Immunogen:</b>	TBX1 / Brachyury antibody was raised against kLH-conjugated synthetic peptide from C-terminal region of human TBX1.
<b>Specificity:</b>	Human TBX1 / Brachyury
<b>Epitope:</b>	aa327-356
<b>Reactivity:</b>	Human
<b>Purification:</b>	Immunoaffinity purified
<b>Presentation:</b>	PBS, 0.09% sodium azide
<b>Recommended Storage:</b>	Maintain refrigerated at 2-8°C for up to 6 months. For long term storage store at -20°C.
<b>Uses:</b>	IHC - Paraffin (1:75), Immunofluorescence (1:10 - 1:50), Western blot (1:1000) (Optimal dilution to be determined by the researcher)
<b>Size:</b>	200 µl

**Immunohistochemistry Image:**



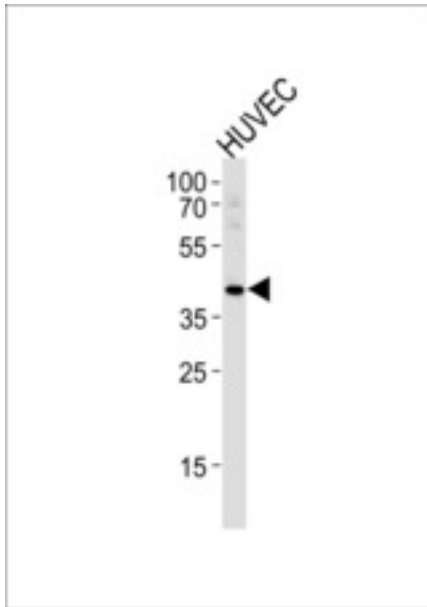
Human Testis: Formalin-Fixed, Paraffin-Embedded (FFPE)

**Immunofluorescence Image:**



Confocal immunofluorescence of TBX1 Antibody (C-term) with HepG2 cell followed by Alexa Fluor 488-conjugated goat anti-rabbit IgG (green). DAPI was used to stain the cell nuclear (blue).

**Western Blot Image:**



Western blot of TBX1 Antibody (C-term) in HUVEC cell line lysates (35 ug/lane). TBX1 (arrow) was detected using the purified Pab.

**Requested From:**

Japan

Laboratory Reagent For In Vitro Research Use Only

Not for resale without prior written consent from LifeSpan BioSciences, Inc.

Created on 9/23/2014

© 2014 LifeSpan BioSciences