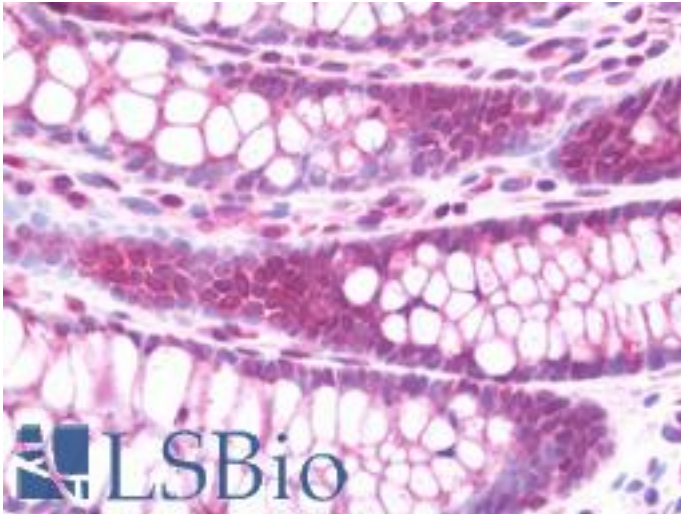


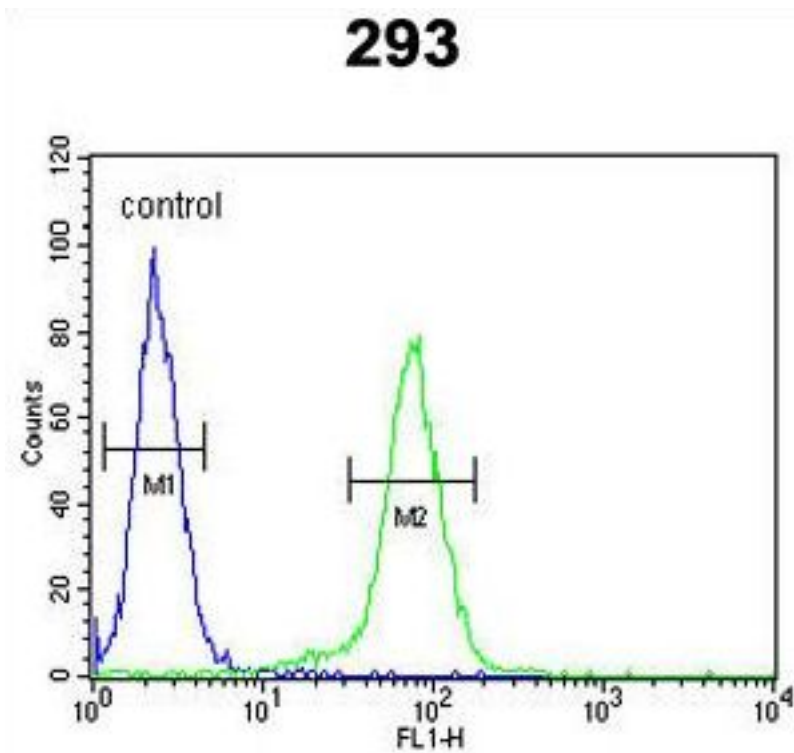
CLDN8 / Claudin 8 Rabbit anti-Human Polyclonal (aa140-166) Antibody - LS-B10716 - LSBio	
CatalogID:	LS-B10716
Validation:	This antibody replaces catalog number LS-C168820. It has been validated for use in the following assays: IHC-P.
Target:	claudin 8 (CLDN8)
Synonyms:	CLDN8 Antibody, Claudin 8 Antibody, Claudin-8 Antibody
Family / Subfamily:	Claudin / not assigned-Claudin
Host	CLDN8 antibody was produced in Rabbit
Clonality:	Polyclonal
Immunogen Species:	CLDN8 / Claudin 8 antibody was raised against Human
Antigen Type:	Synthetic peptide
Immunogen:	CLDN8 / Claudin 8 antibody was raised against kLH-conjugated synthetic peptide from internal region of human CLDN8.
Specificity:	Human CLDN8 / Claudin 8
Epitope:	aa140-166
Reactivity:	Human
Purification:	Immunoaffinity purified
Presentation:	PBS, 0.09% sodium azide
Recommended Storage:	Maintain refrigerated at 2-8°C for up to 6 months. For long term storage store at -20°C.
Uses:	IHC - Paraffin (1:75), Western blot (1:1000), Flow Cytometry (1:10 - 1:50) (Optimal dilution to be determined by the researcher)
Size:	200 µl

Immunohistochemistry Image:



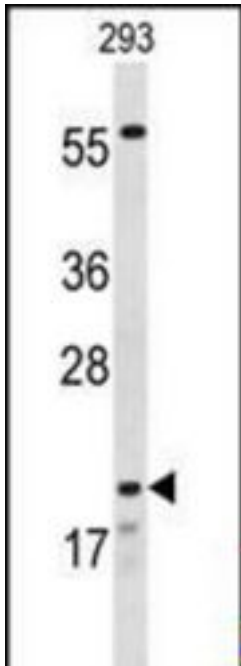
Human Colon: Formalin-Fixed, Paraffin-Embedded (FFPE)

Flow Cytometry Image:



CLDN8 Antibody (Center) flow cytometry of 293 cells (right histogram) compared to a negative control cell (left histogram). FITC-conjugated goat-anti-rabbit secondary antibodies were used for the analysis.

Western Blot Image:



Western blot of CLDN8 Antibody (Center) in 293 cell line lysates (35 ug/lane). CLDN8 (arrow) was detected using the purified Pab.

Requested From:

Japan

Laboratory Reagent For In Vitro Research Use Only

Not for resale without prior written consent from LifeSpan BioSciences, Inc.

Created on 9/23/2014

© 2014 LifeSpan BioSciences