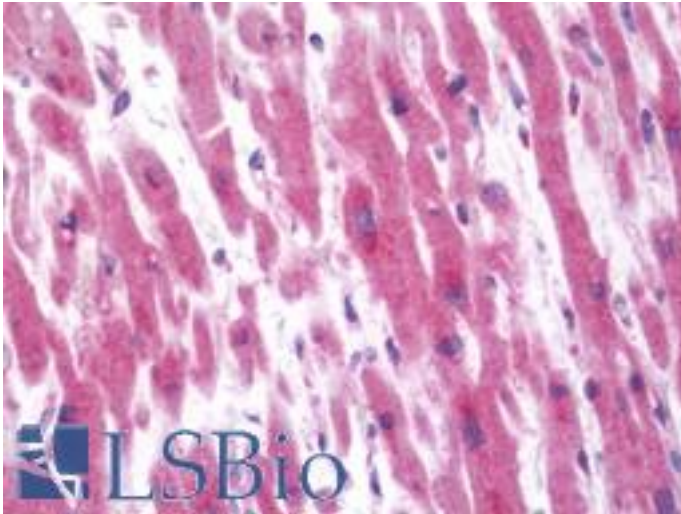


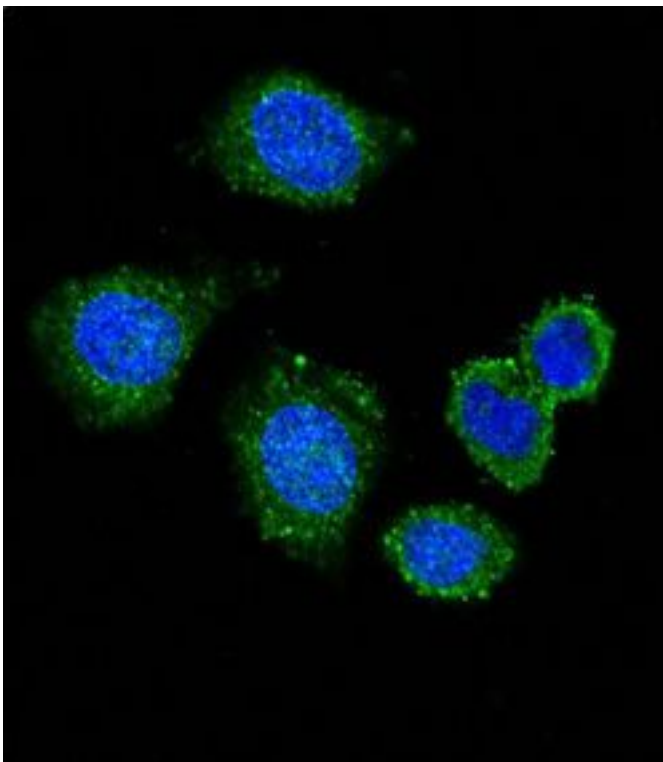
ALOX12/12 Lipoxygenase/12-LOX Rabbit anti-Human Polyclonal (aa618-650) Antibody - LS-B10714 - LSBio	
CatalogID:	LS-B10714
Validation:	This antibody replaces catalog number LS-C156288. It has been validated for use in the following assays: IHC-P.
Target:	arachidonate 12-lipoxygenase (ALOX12)
Synonyms:	ALOX12 Antibody, 12S-lipoxygenase Antibody, 12-lipoxygenase Antibody, 12S-LOX Antibody, 12(S)-lipoxygenase Antibody, 12-LOX Antibody, 12 Lipoxygenase Antibody, Arachidonate 12-lipoxygenase Antibody, LOG12 Antibody, Platelet 12-LOX Antibody, Platelet-type 12-lipoxygenase Antibody, Platelet-type lipoxygenase 12 Antibody
Host	ALOX12 antibody was produced in Rabbit
Clonality:	Polyclonal
Immunogen Species:	ALOX12/12 Lipoxygenase/12-LOX antibody was raised against Human
Antigen Type:	Synthetic peptide
Immunogen:	ALOX12/12 Lipoxygenase/12-LOX antibody was raised against kLH-conjugated synthetic peptide from C-terminal region of human ALOX12 .
Specificity:	Human 12 Lipoxygenase / ALOX12
Epitope:	aa618-650
Reactivity:	Human
Purification:	Ammonium sulfate precipitation
Presentation:	PBS, 0.09% sodium azide
Recommended Storage:	Maintain refrigerated at 2-8°C for up to 6 months. For long term storage store at -20°C.
Uses:	IHC - Paraffin (1:50), Immunofluorescence (1:10 - 1:50), Western blot (1:1000), Flow Cytometry (1:10 - 1:50) (Optimal dilution to be determined by the researcher)
Size:	200 µl

Immunohistochemistry Image:



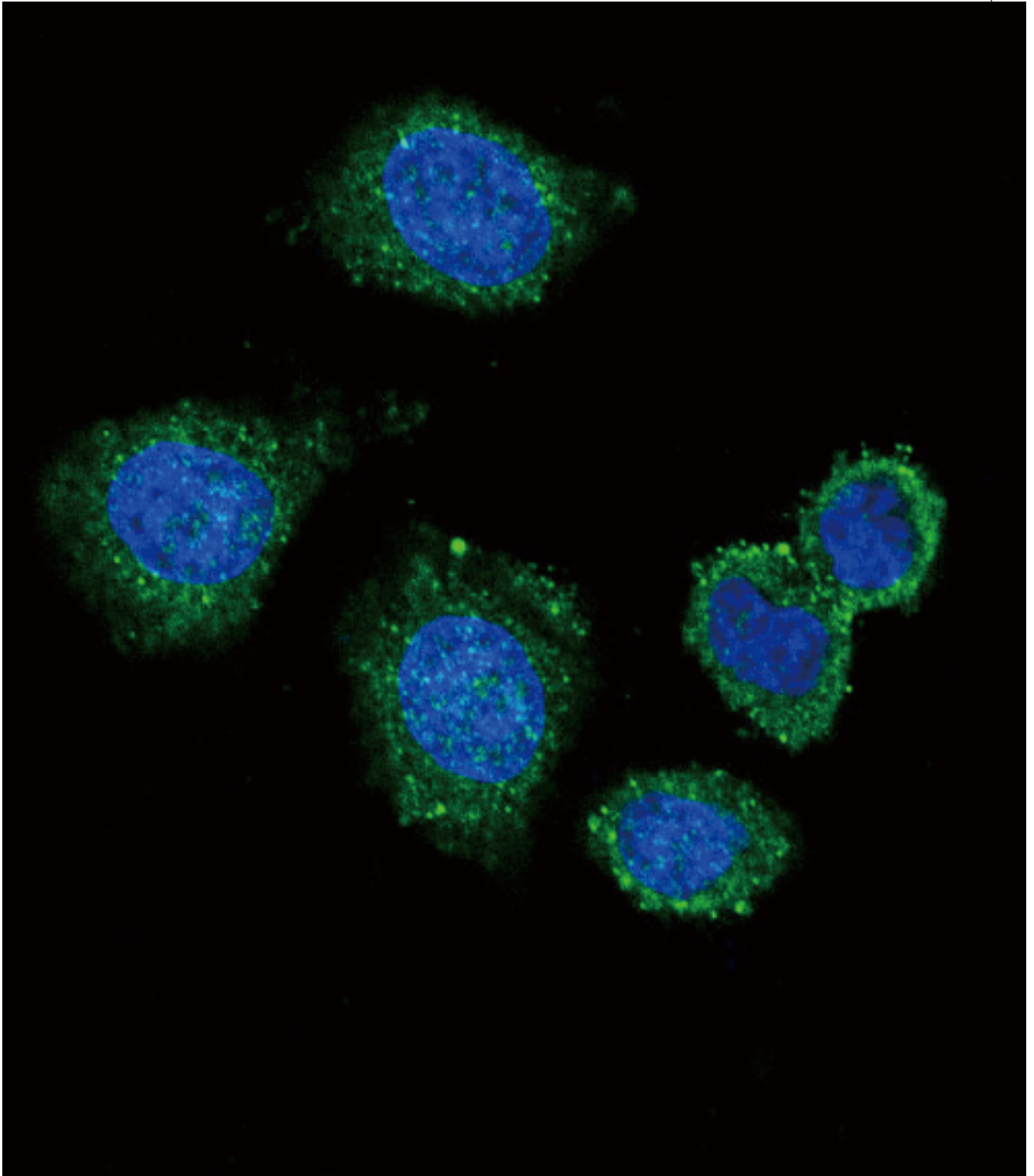
Human Heart: Formalin-Fixed, Paraffin-Embedded (FFPE)

Immunofluorescence Image:



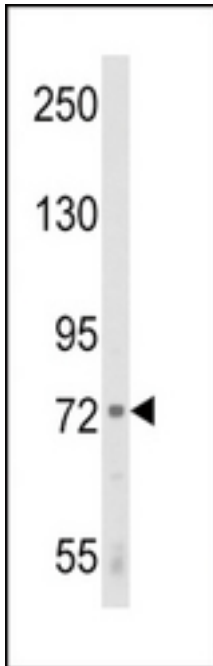
Confocal immunofluorescence of ALOX12 Antibody (C-term) with 293 cell followed by Alexa Fluor 488-conjugated goat anti-rabbit IgG (green). DAPI was used to stain the cell nuclear (blue).

Flow Cytometry Image:



ALOX12 Antibody (C-term) flow cytometry of k562 cells (bottom histogram) compared to a negative control cell (top histogram). FITC-conjugated goat-anti-rabbit secondary antibodies were used for the analysis.

Western Blot Image:



Western blot of ALOX12 Antibody (C-term) in K562 cell line lysates (35 ug/lane). ALOX12 (arrow) was detected using the purified Pab.

Requested From:

Japan

Laboratory Reagent For In Vitro Research Use Only

Not for resale without prior written consent from LifeSpan BioSciences, Inc.

Created on 9/23/2014

© 2014 LifeSpan BioSciences