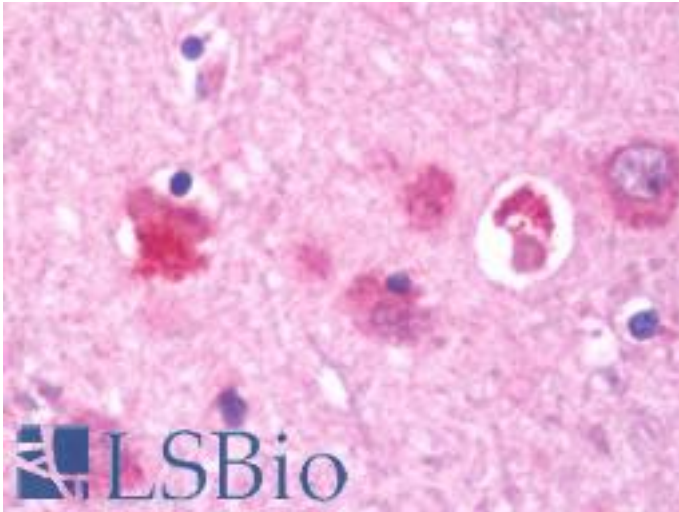


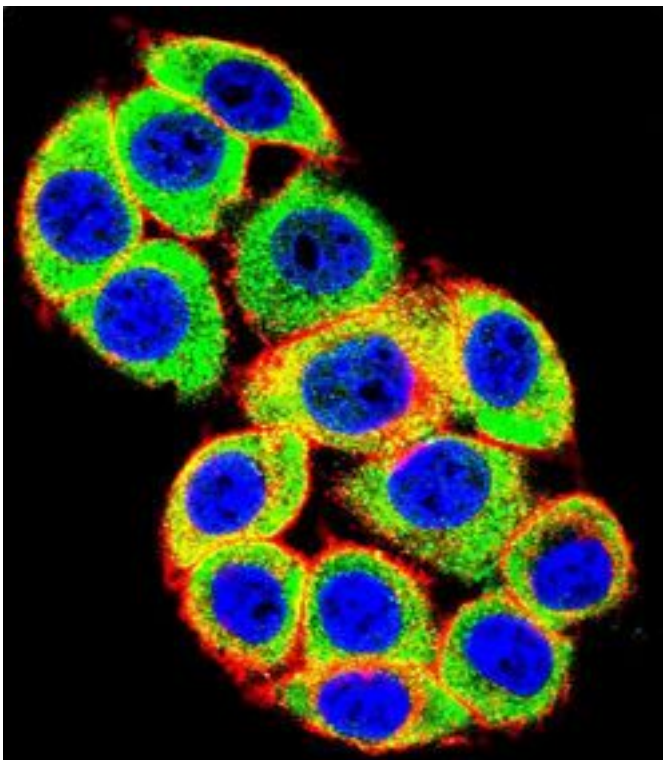
PRKCA / PKC-Alpha Rabbit anti-Human Polyclonal (aa75-103) Antibody - LS-B10713 - LSBio	
CatalogID:	LS-B10713
Validation:	This antibody replaces catalog number LS-C162154. It has been validated for use in the following assays: IHC-P.
Target:	protein kinase C, alpha (PRKCA)
Synonyms:	PRKCA Antibody, Aging-associated gene 6 Antibody, AAG6 Antibody, Alpha PKC Antibody, PKC-A Antibody, Pkcalpha Antibody, Protein kinase C alpha type Antibody, PKC Alpha Antibody, PKC-alpha Antibody, PKCA Antibody, Protein kinase c alpha Antibody, Protein kinase C, alpha Antibody
Family / Subfamily:	Protein Kinase / PKC
Host	PRKCA antibody was produced in Rabbit
Clonality:	Polyclonal
Immunogen Species:	PRKCA / PKC-Alpha antibody was raised against Human
Antigen Type:	Synthetic peptide
Immunogen:	PRKCA / PKC-Alpha antibody was raised against kLH-conjugated synthetic peptide from N-terminal region of human PRKCA.
Specificity:	Human PKC Alpha
Epitope:	aa75-103
Reactivity:	Human, Mouse
Purification:	Ammonium sulfate precipitation
Presentation:	PBS, 0.09% sodium azide
Recommended Storage:	Maintain refrigerated at 2-8°C for up to 6 months. For long term storage store at -20°C.
Uses:	IHC - Paraffin (1:50), Immunofluorescence (1:10 - 1:50), Western blot (1:1000), Flow Cytometry (1:10 - 1:50) (Optimal dilution to be determined by the researcher)
Size:	200 µl

Immunohistochemistry Image:



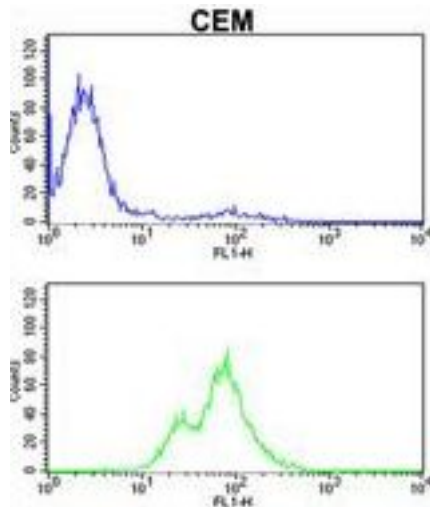
Human Brain, Cortex: Formalin-Fixed, Paraffin-Embedded (FFPE)

Immunofluorescence Image:



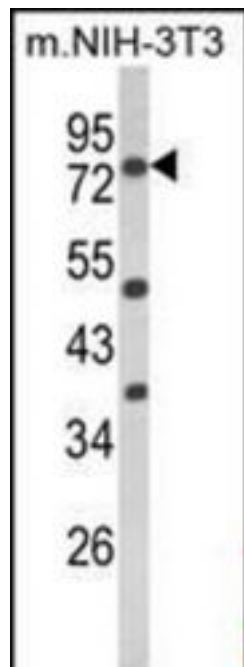
Confocal immunofluorescence of PRKCA Antibody (N-term) with HeLa cell followed by Alexa Fluor 488-conjugated goat anti-rabbit IgG (green). Actin filaments have been labeled with Alexa Fluor 555 phalloidin (red). DAPI was used to stain the cell nuclear (blue).

Flow Cytometry Image:



PRKCA Antibody (N-term) flow cytometry of CEM cells (bottom histogram) compared to a negative control cell (top histogram). FITC-conjugated goat-anti-rabbit secondary antibodies were used for the analysis.

Western Blot Image:



Western blot of PRKCA Antibody (N-term) in mouse NIH-3T3 cell line lysates (35 ug/lane). PRKCA (arrow) was detected using the purified Pab.

Requested From:

Japan

Laboratory Reagent For In Vitro Research Use Only

Not for resale without prior written consent from LifeSpan BioSciences, Inc.

Created on 9/23/2014

© 2014 LifeSpan BioSciences