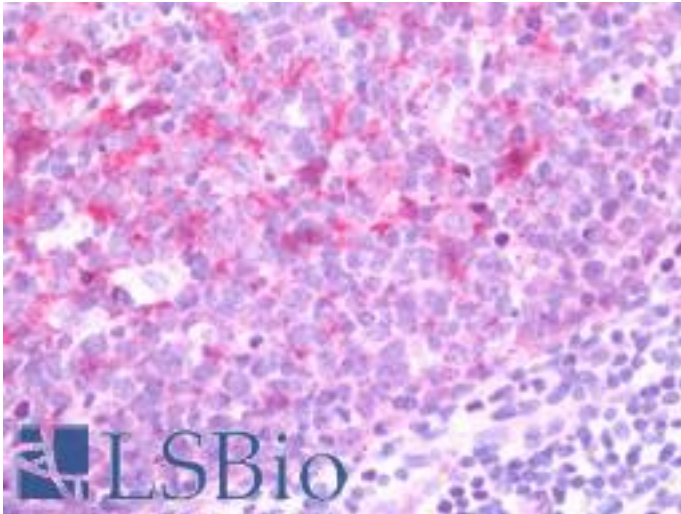


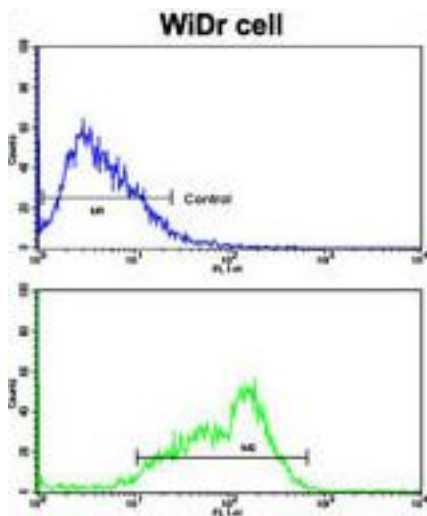
BCL2L11 / BIM Rabbit anti-Human Polyclonal (aa134-160) Antibody - LS-B10712 - LSBio	
CatalogID:	LS-B10712
Validation:	This antibody replaces catalog number LS-C156773. It has been validated for use in the following assays: IHC-P.
Target:	BCL2-like 11 (apoptosis facilitator) (BCL2L11)
Synonyms:	BCL2L11 Antibody, BIM-alpha6 Antibody, BIM-beta7 Antibody, Bcl-2-like protein 11 Antibody, BIM-beta6 Antibody, BimL Antibody, BimS Antibody, Bcl-2 interacting protein Bim Antibody, BimEL Antibody, BAM Antibody, Bcl2-L-11 Antibody, BIM Antibody, BOD Antibody
Family / Subfamily:	Apoptosis
Host	BCL2L11 antibody was produced in Rabbit
Clonality:	Polyclonal
Immunogen Species:	BCL2L11 / BIM antibody was raised against Human
Antigen Type:	Synthetic peptide
Immunogen:	BCL2L11 / BIM antibody was raised against kLH-conjugated synthetic peptide from internal region of human BCL2L11.
Specificity:	Human BIM
Epitope:	aa134-160
Reactivity:	Human
Purification:	Immunoaffinity purified
Presentation:	PBS, 0.09% sodium azide
Recommended Storage:	Maintain refrigerated at 2-8°C for up to 6 months. For long term storage store at -20°C.
Uses:	IHC - Paraffin (1:50), Western blot (1:1000), Flow Cytometry (1:10 - 1:50) (Optimal dilution to be determined by the researcher)
Size:	200 µl

Immunohistochemistry Image:



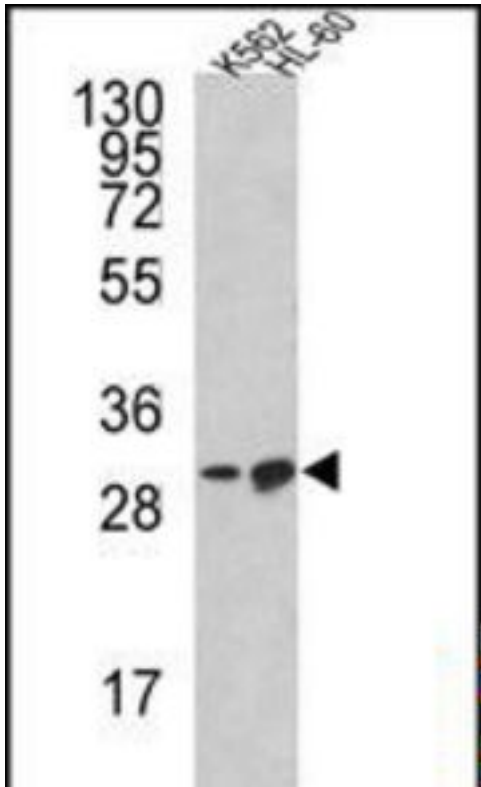
Human Tonsil: Formalin-Fixed, Paraffin-Embedded (FFPE)

Flow Cytometry Image:



Flow cytometry of WiDr cells using BCL2L11 Antibody (Center)(bottom histogram) compared to a negative control cell (top histogram). FITC-conjugated goat-anti-rabbit secondary antibodies were used for the analysis.

Western Blot Image:



Western blot of BCL2L11 Antibody (Center) in K562, HL-60 cell line lysates (35 ug/lane). BCL2L11 (arrow) was detected using the purified Pab.

Requested From:

Japan

Laboratory Reagent For In Vitro Research Use Only

Not for resale without prior written consent from LifeSpan BioSciences, Inc.

Created on 9/23/2014

© 2014 LifeSpan BioSciences