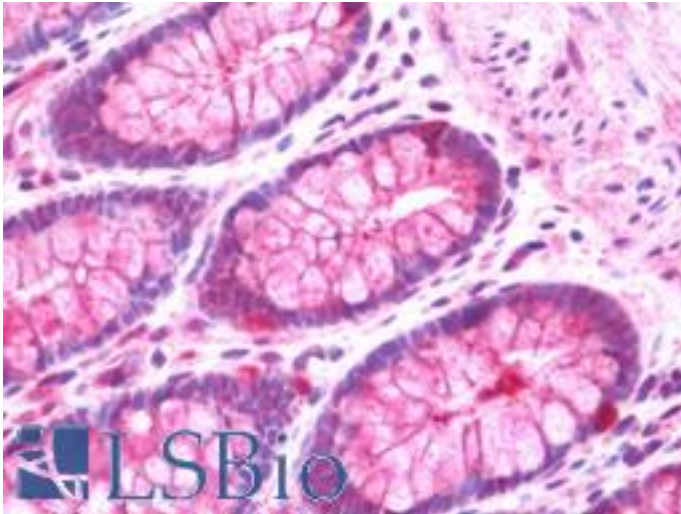


BRD3 Rabbit anti-Human Polyclonal (aa672-702) Antibody - LS-B10710 - LSBio

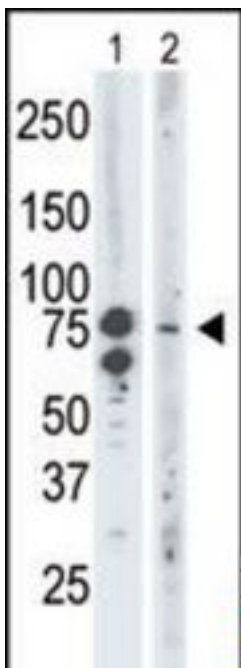
CatalogID:	LS-B10710
Validation:	This antibody replaces catalog number LS-C101129. It has been validated for use in the following assays: IHC-P.
Target:	bromodomain containing 3 (BRD3)
Synonyms:	BRD3 Antibody, Bromodomain-containing 3 Antibody, Fsrg2 Antibody, KIAA0043 Antibody, ORFX Antibody, RING3-like protein Antibody, RING3L Antibody, Bromodomain containing 3 Antibody
Family / Subfamily:	Protein Kinase / BRD
Host	BRD3 antibody was produced in Rabbit
Clonality:	Polyclonal
Immunogen Species:	BRD3 antibody was raised against Human
Antigen Type:	Synthetic peptide
Immunogen:	BRD3 antibody was raised against kLH conjugated synthetic peptide selected from the C-terminal region of human BRD3.
Epitope:	aa672-702
Reactivity:	Human, Mouse
Purification:	Ammonium sulfate precipitation
Presentation:	PBS, 0.09% sodium azide
Recommended Storage:	Maintain refrigerated at 2-8°C for up to 6 months. For long term storage store at -20°C.
Uses:	IHC - Paraffin (1:100), Western blot (1:1000) (Optimal dilution to be determined by the researcher)
Size:	200 µl

Immunohistochemistry Image:



Human Colon: Formalin-Fixed, Paraffin-Embedded (FFPE)

Western Blot Image:



Western blot of BRD3 antibody to detect BRD3 in mouse brain tissue lysate (Lane 1) and Saos-2 cell lysate (Lane 2).

Requested From:

Japan

Laboratory Reagent For In Vitro Research Use Only

Not for resale without prior written consent from LifeSpan BioSciences, Inc.

Created on 9/23/2014

© 2014 LifeSpan BioSciences