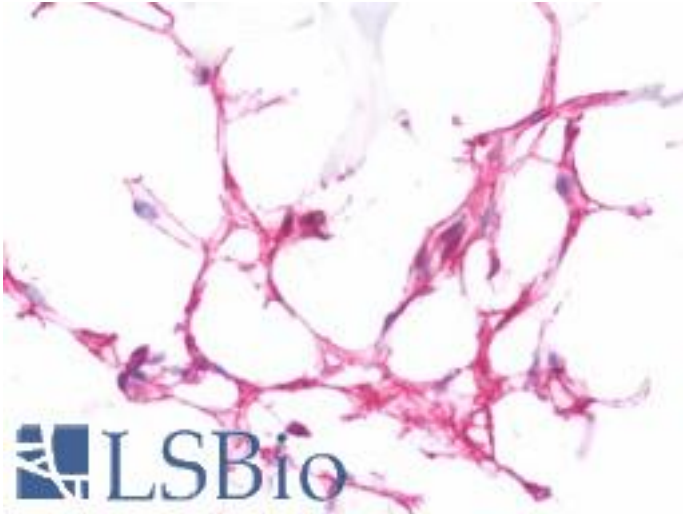


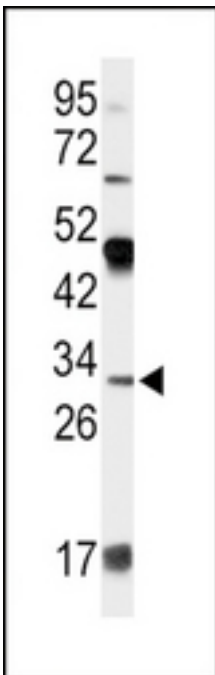
APOD / Apolipoprotein D Rabbit anti-Human Polyclonal (aa26-53) Antibody - LS-B10708 - LSBio	
CatalogID:	LS-B10708
Validation:	This antibody replaces catalog number LS-C156420. It has been validated for use in the following assays: IHC-P.
Target:	apolipoprotein D (APOD)
Synonyms:	APOD Antibody, Apo-D Antibody, Apolipoprotein D Antibody
Host	APOD antibody was produced in Rabbit
Clonality:	Polyclonal
Immunogen Species:	APOD / Apolipoprotein D antibody was raised against Human
Antigen Type:	Synthetic peptide
Immunogen:	APOD / Apolipoprotein D antibody was raised against KLH-conjugated synthetic peptide from N-terminal region of human APOD.
Specificity:	Human APOD / Apolipoprotein D
Epitope:	aa26-53
Reactivity:	Human, Mouse
Purification:	Ammonium sulfate precipitation
Presentation:	PBS, 0.09% sodium azide
Recommended Storage:	Maintain refrigerated at 2-8°C for up to 6 months. For long term storage store at -20°C.
Uses:	IHC - Paraffin (1:75), Western blot (1:1000) (Optimal dilution to be determined by the researcher)
Size:	200 µl

Immunohistochemistry Image:



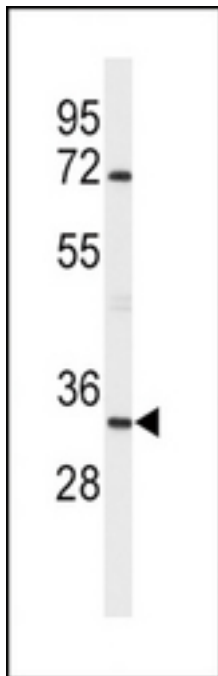
Human Breast: Formalin-Fixed, Paraffin-Embedded (FFPE)

Western Blot Image:



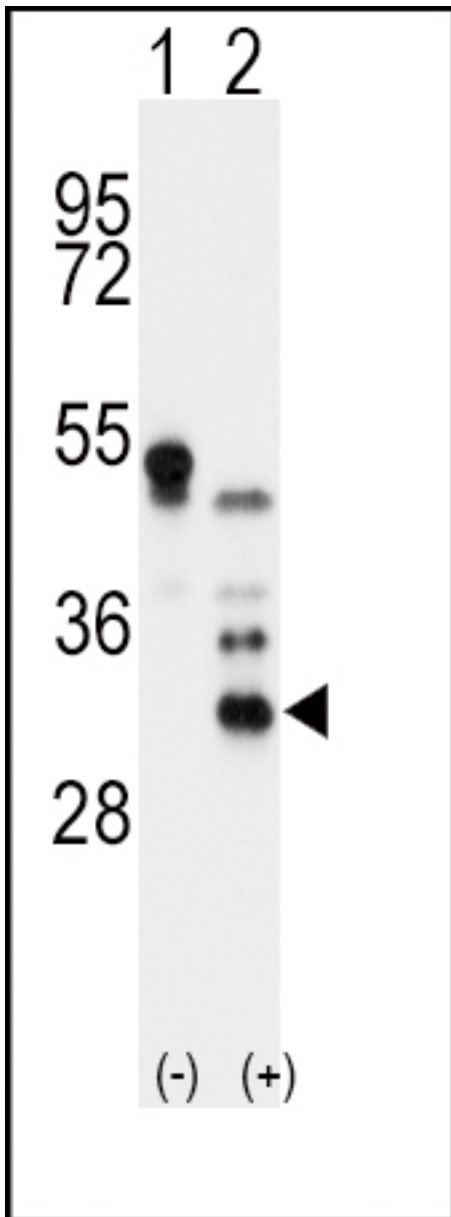
Western blot of APOD Antibody (N-term) in 293 cell line lysates (35 ug/lane). APOD (arrow) was detected using the purified Pab.

Western Blot Image:



Western blot of APOD Antibody (N-term) in mouse brain tissue lysates (35 ug/lane). APOD (arrow) was detected using the purified Pab.

Western Blot Image:



Western blot of APOD (arrow) using rabbit polyclonal APOD Antibody (N-term) 293 cell lysates (2 ug/lane) either nontransfected (Lane 1) or transiently transfected with the APOD gene (Lane 2).

Requested From:

Japan

Laboratory Reagent For In Vitro Research Use Only

Not for resale without prior written consent from LifeSpan BioSciences, Inc.

Created on 9/23/2014

© 2014 LifeSpan BioSciences