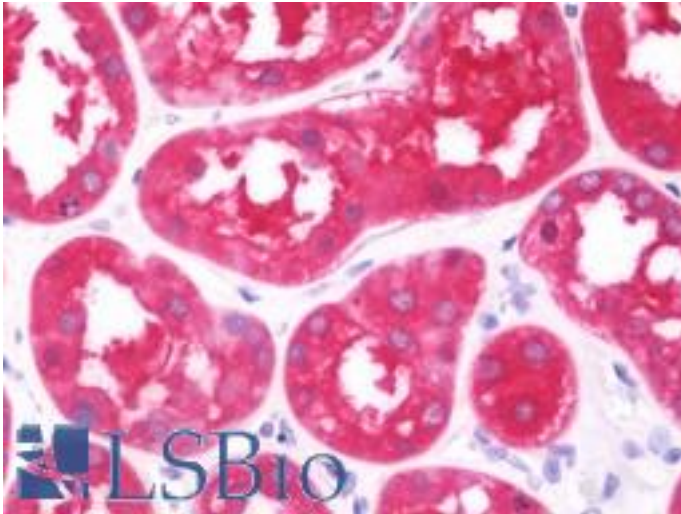


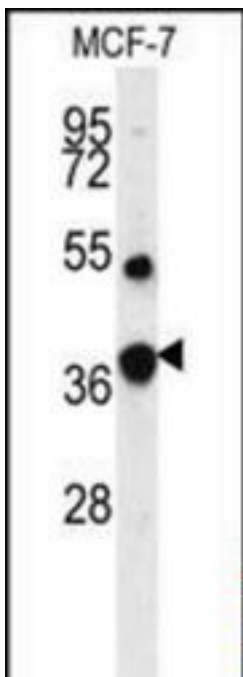
| FBP1 Rabbit anti-Human Polyclonal (aa125-156) Antibody - LS-B10707 - LSBio | |
|--|---|
| CatalogID: | LS-B10707 |
| Validation: | This antibody replaces catalog number LS-C100576. It has been validated for use in the following assays: IHC-P. |
| Target: | fructose-1,6-bisphosphatase 1 (FBP1) |
| Synonyms: | FBP1 Antibody, Fructose-bisphosphatase 1 Antibody, FBP Antibody, Fructose 1,6-bisphosphatase Antibody, Fructose-1,6-bisphosphatase 1 Antibody, Growth-inhibiting protein 17 Antibody, FBPase 1 Antibody |
| Host | FBP1 antibody was produced in Rabbit |
| Clonality: | Polyclonal |
| Immunogen Species: | FBP1 antibody was raised against Human |
| Antigen Type: | Synthetic peptide |
| Immunogen: | FBP1 antibody was raised against kLH conjugated synthetic peptide selected from the Center region of human FBP1. |
| Epitope: | aa125-156 |
| Reactivity: | Human, Mouse |
| Purification: | Ammonium sulfate precipitation |
| Presentation: | PBS, 0.09% sodium azide |
| Recommended Storage: | Maintain refrigerated at 2-8°C for up to 6 months. For long term storage store at -20°C. |
| Uses: | IHC - Paraffin (1:75), Western blot (1:1000) (Optimal dilution to be determined by the researcher) |
| Size: | 200 µl |

Immunohistochemistry Image:



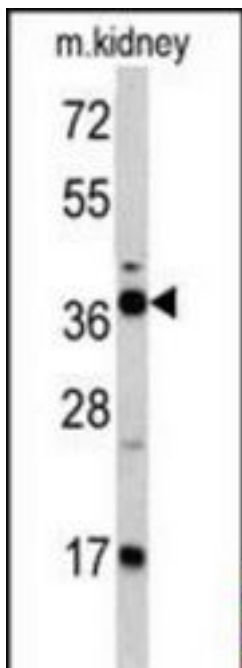
Human Kidney: Formalin-Fixed, Paraffin-Embedded (FFPE)

Western Blot Image:



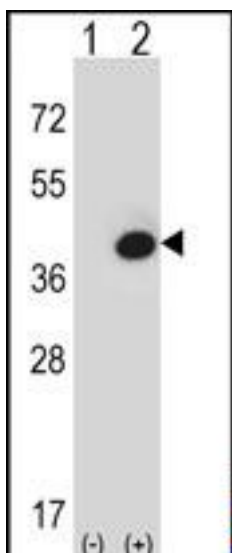
Western blot of FBP1 Antibody (Center) in MCF-7 cell line lysates (35 ug/lane). FBP1 (arrow) was detected using the purified Pab.

Western Blot Image:



Western blot of FBP1 antibody (Center) in mouse kidney tissue lysates (35 ug/lane). FBP1 (arrow) was detected using the purified Pab.

Western Blot Image:



Western blot of FBP1 (arrow) using rabbit polyclonal FBP1 Antibody (Center). 293 cell lysates (2 ug/lane) either nontransfected (Lane 1) or transiently transfected (Lane 2) with the FBP1 gene.

Requested From:

Japan

Laboratory Reagent For In Vitro Research Use Only

Not for resale without prior written consent from LifeSpan BioSciences, Inc.

Created on 9/23/2014

© 2014 LifeSpan BioSciences