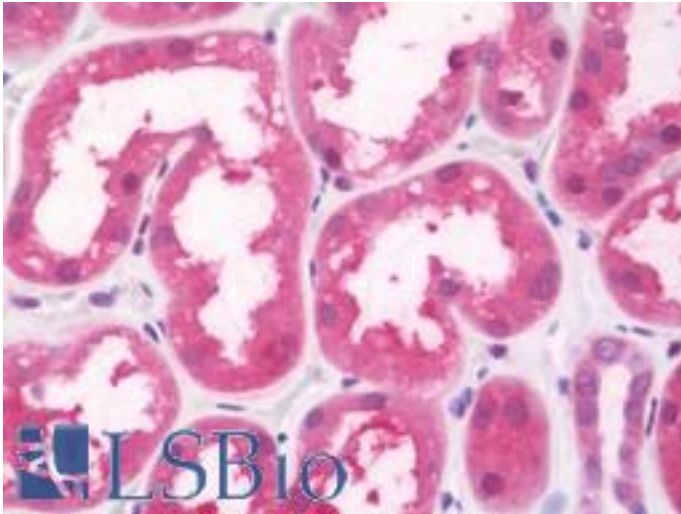


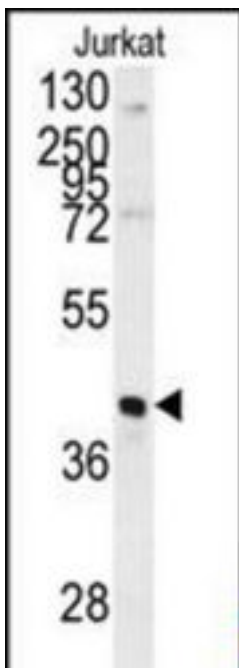
FBP1 Rabbit anti-Human Polyclonal (aa1-31) Antibody - LS-B10706 - LSBio	
CatalogID:	LS-B10706
Validation:	This antibody replaces catalog number LS-C100575. It has been validated for use in the following assays: IHC-P.
Target:	fructose-1,6-bisphosphatase 1 (FBP1)
Synonyms:	FBP1 Antibody, Fructose-bisphosphatase 1 Antibody, FBP Antibody, Fructose 1,6-bisphosphatase Antibody, Fructose-1,6-bisphosphatase 1 Antibody, Growth-inhibiting protein 17 Antibody, FBPase 1 Antibody
Host	FBP1 antibody was produced in Rabbit
Clonality:	Polyclonal
Immunogen Species:	FBP1 antibody was raised against Human
Antigen Type:	Synthetic peptide
Immunogen:	FBP1 antibody was raised against kLH conjugated synthetic peptide selected from the N-terminal region of human FBP1.
Epitope:	aa1-31
Reactivity:	Human
Purification:	Ammonium sulfate precipitation
Presentation:	PBS, 0.09% sodium azide
Recommended Storage:	Maintain refrigerated at 2-8°C for up to 6 months. For long term storage store at -20°C.
Uses:	IHC - Paraffin (1:75), Western blot (1:1000) (Optimal dilution to be determined by the researcher)
Size:	200 µl

Immunohistochemistry Image:



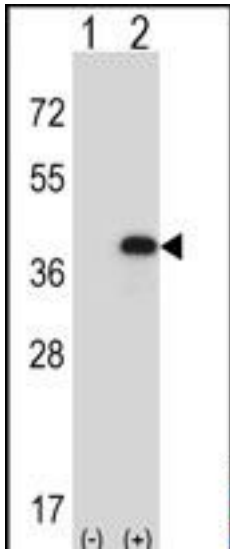
Human Kidney: Formalin-Fixed, Paraffin-Embedded (FFPE)

Western Blot Image:



Western blot of FBP1 antibody (N-term) in Jurkat cell line lysates (35 ug/lane). FBP1 (arrow) was detected using the purified Pab.

Western Blot Image:



Western blot of FBP1 (arrow) using rabbit polyclonal FBP1 Antibody (N-term). 293 cell lysates (2 ug/lane) either nontransfected (Lane 1) or transiently transfected (Lane 2) with the FBP1 gene.

Requested From:

Japan

Laboratory Reagent For In Vitro Research Use Only

Not for resale without prior written consent from LifeSpan BioSciences, Inc.

Created on 9/23/2014

© 2014 LifeSpan BioSciences