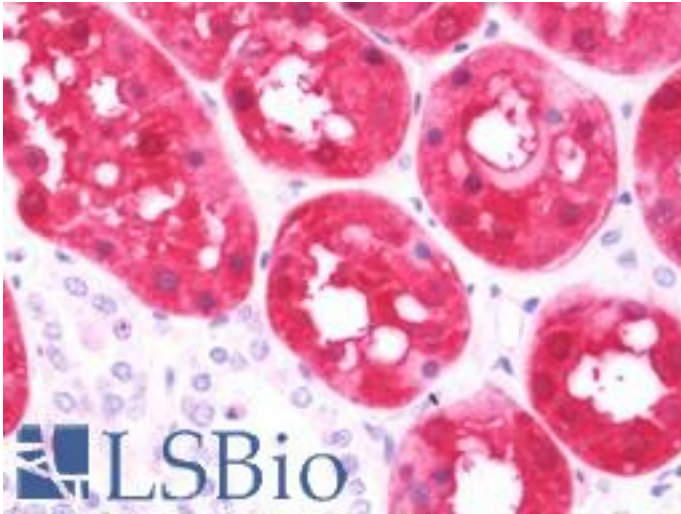


ASS1 / ASS Rabbit anti-Human Polyclonal (aa192-221) Antibody - LS-B10705 - LSBio

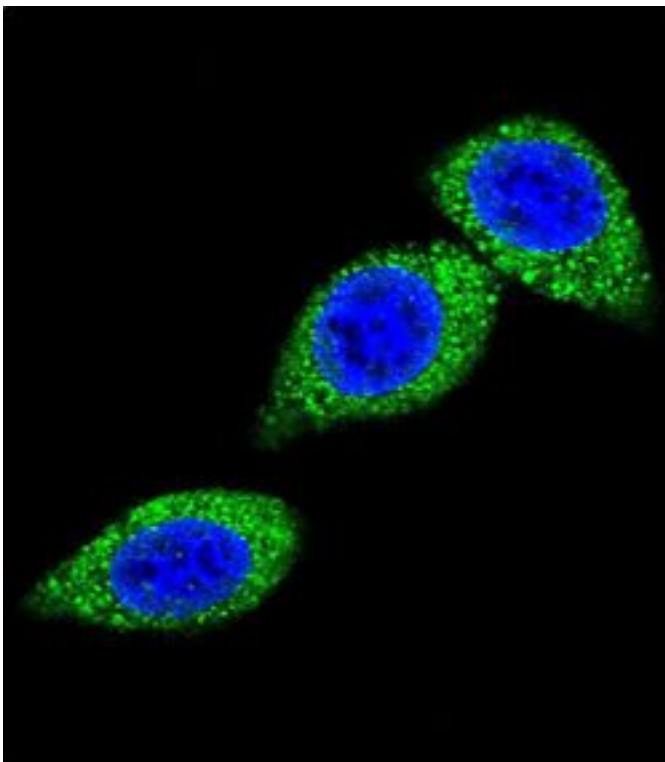
CatalogID:	LS-B10705
Validation:	This antibody replaces catalog number LS-C156554. It has been validated for use in the following assays: IHC-P.
Target:	argininosuccinate synthase 1 (ASS1)
Synonyms:	ASS1 Antibody, Argininosuccinate synthetase Antibody, ASS Antibody, Argininosuccinate synthase 1 Antibody, CTLN1 Antibody, Citrulline--aspartate ligase Antibody, Citrulline-aspartate ligase Antibody, Argininosuccinate synthase Antibody, Argininosuccinate synthetase 1 Antibody
Host	ASS1 antibody was produced in Rabbit
Clonality:	Polyclonal
Immunogen Species:	ASS1 / ASS antibody was raised against Human
Antigen Type:	Synthetic peptide
Immunogen:	ASS1 / ASS antibody was raised against kLH-conjugated synthetic peptide from internal region of human ASS.
Specificity:	Human ASS1 / ASS
Epitope:	aa192-221
Reactivity:	Human, Mouse
Purification:	Ammonium sulfate precipitation
Presentation:	PBS, 0.09% sodium azide
Recommended Storage:	Maintain refrigerated at 2-8°C for up to 6 months. For long term storage store at -20°C.
Uses:	IHC - Paraffin (1:75), Immunofluorescence (1:10 - 1:50), Western blot (1:1000), Flow Cytometry (1:10 - 1:50) (Optimal dilution to be determined by the researcher)
Size:	200 µl

Immunohistochemistry Image:



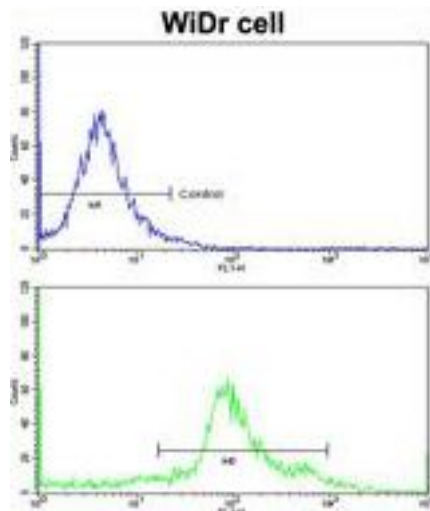
Human Kidney: Formalin-Fixed, Paraffin-Embedded (FFPE)

Immunofluorescence Image:



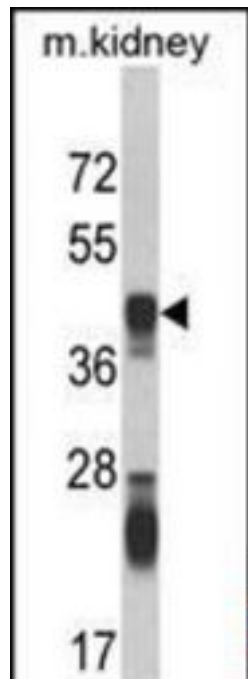
Confocal immunofluorescence of ASS Antibody (Center) with HeLa cell followed by Alexa Fluor 488-conjugated goat anti-rabbit IgG (green). DAPI was used to stain the cell nuclear (blue).

Flow Cytometry Image:



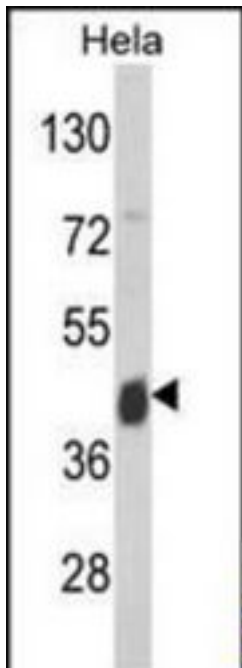
Flow cytometry of widr cells using ASS Antibody (Center)(bottom histogram) compared to a negative control cell (top histogram) FITC-conjugated goat-anti-rabbit secondary antibodies were used for the analysis.

Western Blot Image:



Western blot of ASS Antibody (Center) in mouse kidney tissue lysates (35 ug/lane). ASS (arrow) was detected using the purified Pab.

Western Blot Image:



Western blot of ASS Antibody (Center) in HeLa cell line lysates (35 ug/lane). ASS (arrow) was detected using the purified Pab.

Requested From:

Japan

Laboratory Reagent For In Vitro Research Use Only

Not for resale without prior written consent from LifeSpan BioSciences, Inc.

Created on 9/23/2014

© 2014 LifeSpan BioSciences