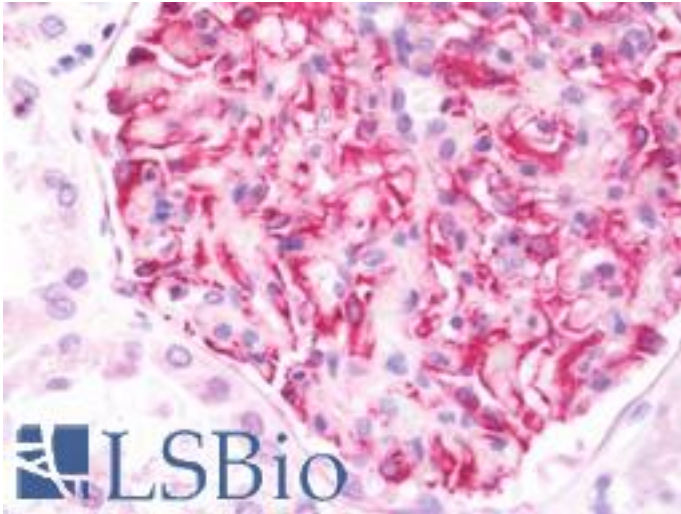


CUEDC2 Rabbit anti-Human Polyclonal (aa239-267) Antibody - LS-B10704 - LSBio

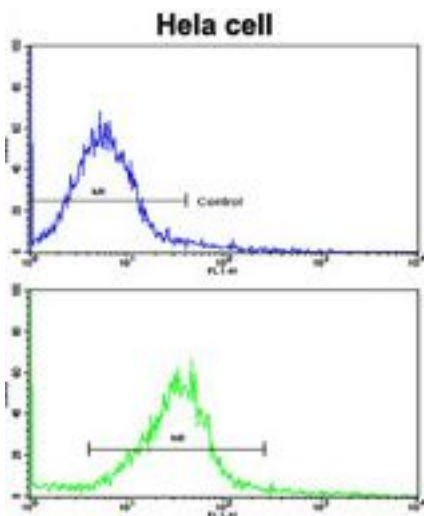
| | |
|-----------------------------|--|
| CatalogID: | LS-B10704 |
| Validation: | This antibody replaces catalog number LS-C167155. It has been validated for use in the following assays: IHC-P. |
| Target: | CUE domain containing 2 (CUEDC2) |
| Synonyms: | CUEDC2 Antibody, BA18114.5 Antibody, C10orf66 Antibody, CUE domain containing 2 Antibody |
| Host | CUEDC2 antibody was produced in Rabbit |
| Clonality: | Polyclonal |
| Immunogen Species: | CUEDC2 antibody was raised against Human |
| Antigen Type: | Synthetic peptide |
| Immunogen: | CUEDC2 antibody was raised against kLH-conjugated synthetic peptide from C-terminal region of human CUEDC2. |
| Specificity: | Human CUEDC2 |
| Epitope: | aa239-267 |
| Reactivity: | Human |
| Purification: | Ammonium sulfate precipitation |
| Presentation: | PBS, 0.09% sodium azide |
| Recommended Storage: | Maintain refrigerated at 2-8°C for up to 6 months. For long term storage store at -20°C. |
| Uses: | IHC - Paraffin (1:75), Western blot (1:1000), Flow Cytometry (1:10 - 1:50) (Optimal dilution to be determined by the researcher) |
| Size: | 200 µl |

Immunohistochemistry Image:



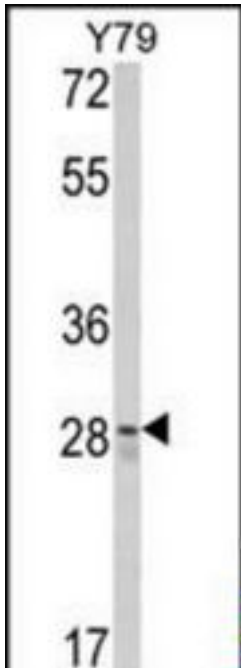
Human Kidney: Formalin-Fixed, Paraffin-Embedded (FFPE)

Flow Cytometry Image:



Flow cytometry of HeLa cells using CUEDC2 Antibody (C-term)(bottom histogram) compared to a negative control cell (top histogram). FITC-conjugated goat-anti-rabbit secondary antibodies were used for the analysis.

Western Blot Image:



Western blot of CUEDC2 Antibody (C-term) in Y79 cell line lysates (35 ug/lane). CUEDC2 (arrow) was detected using the purified Pab.

Requested From:

Japan

Laboratory Reagent For In Vitro Research Use Only

Not for resale without prior written consent from LifeSpan BioSciences, Inc.

Created on 9/23/2014

© 2014 LifeSpan BioSciences