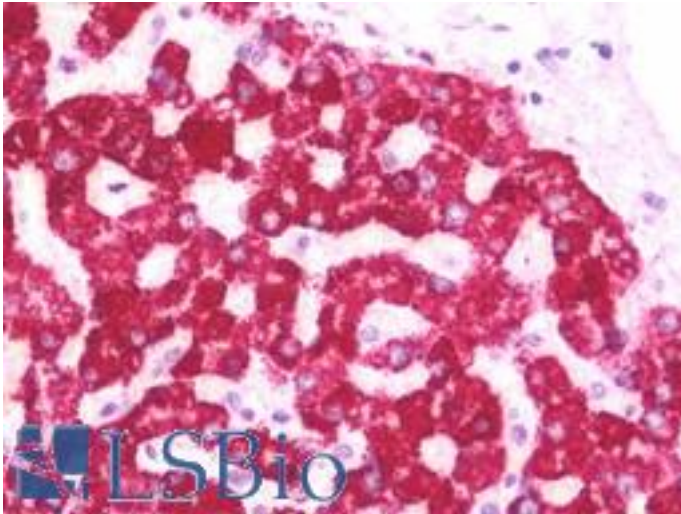


HMGCS2 Rabbit anti-Human Polyclonal (aa478-508) Antibody - LS-B10703 - LSBio

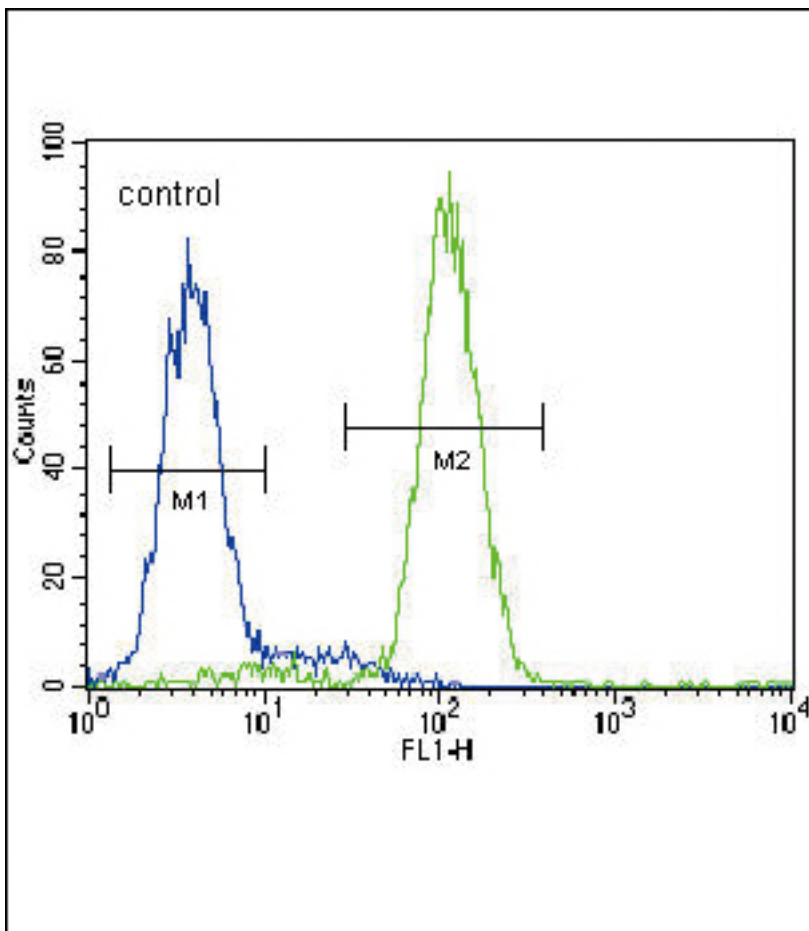
CatalogID:	LS-B10703
Validation:	This antibody replaces catalog number LS-C164936. It has been validated for use in the following assays: IHC-P.
Target:	3-hydroxy-3-methylglutaryl-CoA synthase 2 (mitochondrial) (HMGCS2)
Synonyms:	HMGCS2 Antibody, HMG-CoA synthase Antibody
Host	HMGCS2 antibody was produced in Rabbit
Clonality:	Polyclonal
Immunogen Species:	HMGCS2 antibody was raised against Human
Antigen Type:	Synthetic peptide
Immunogen:	HMGCS2 antibody was raised against kLH-conjugated synthetic peptide from C-terminal region of human HMGCS2.
Specificity:	Human HMGCS2
Epitope:	aa478-508
Reactivity:	Human
Purification:	Ammonium sulfate precipitation
Presentation:	PBS, 0.09% sodium azide
Recommended Storage:	Maintain refrigerated at 2-8°C for up to 6 months. For long term storage store at -20°C.
Uses:	IHC - Paraffin (1:75), Western blot (1:1000), Flow Cytometry (1:10 - 1:50) (Optimal dilution to be determined by the researcher)
Size:	200 µl

Immunohistochemistry Image:



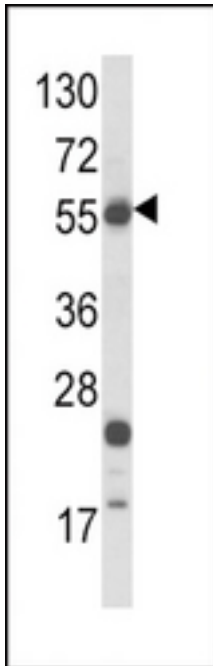
Human Liver: Formalin-Fixed, Paraffin-Embedded (FFPE)

Flow Cytometry Image:



HMGCS2 Antibody (C-term) flow cytometry of HepG2 cells (right histogram) compared to a negative control cell (left histogram). FITC-conjugated goat-anti-rabbit secondary antibodies were used for the analysis.

Western Blot Image:



Western blot of HMGCS2 Antibody (C-term) in HepG2 cell line lysates (35 ug/lane). HMGCS2 (arrow) was detected using the purified Pab.

Requested From:

Japan

Laboratory Reagent For In Vitro Research Use Only

Not for resale without prior written consent from LifeSpan BioSciences, Inc.

Created on 9/23/2014

© 2014 LifeSpan BioSciences