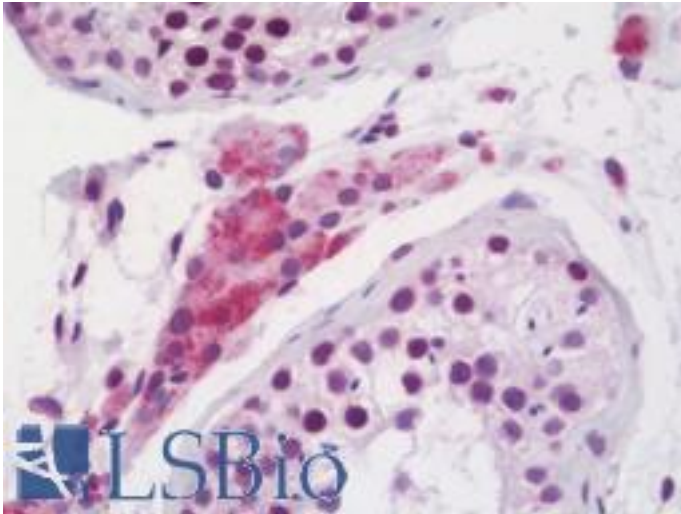


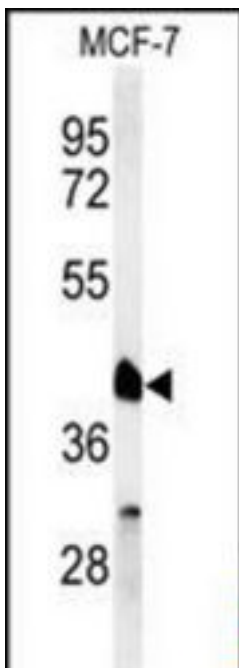
RXTA / RXR-Alpha Rabbit anti-Human Polyclonal (aa196-224) Antibody - LS-B10701 - LSBio	
<b>CatalogID:</b>	LS-B10701
<b>Validation:</b>	This antibody replaces catalog number LS-C162820. It has been validated for use in the following assays: IHC-P.
<b>Target:</b>	retinoid X receptor, alpha (RXRA)
<b>Synonyms:</b>	RXRA Antibody, RXR-alpha Antibody, NR2B1 Antibody, Retinoid X receptor alpha Antibody, Retinoid X receptor, alpha Antibody
<b>Family / Subfamily:</b>	NHR / NR2 Hepatocyte NF4-like
<b>Host</b>	RXRA antibody was produced in Rabbit
<b>Clonality:</b>	Polyclonal
<b>Immunogen Species:</b>	RXTA / RXR-Alpha antibody was raised against Human
<b>Antigen Type:</b>	Synthetic peptide
<b>Immunogen:</b>	RXTA / RXR-Alpha antibody was raised against kLH-conjugated synthetic peptide from internal region of human RXRA.
<b>Specificity:</b>	Human Rxr-alpha / RXRA
<b>Epitope:</b>	aa196-224
<b>Reactivity:</b>	Human
<b>Purification:</b>	Immunoaffinity purified
<b>Presentation:</b>	PBS, 0.09% sodium azide
<b>Recommended Storage:</b>	Maintain refrigerated at 2-8°C for up to 6 months. For long term storage store at -20°C.
<b>Uses:</b>	IHC - Paraffin (1:50), Western blot (1:1000) (Optimal dilution to be determined by the researcher)
<b>Size:</b>	200 µl

**Immunohistochemistry Image:**



Human Testis: Formalin-Fixed, Paraffin-Embedded (FFPE)

**Western Blot Image:**



Western blot of RXRA Antibody (Center) in MCF-7 cell line lysates (35 ug/lane). RXRA (arrow) was detected using the purified Pab.

**Requested From:**

Japan

Laboratory Reagent For In Vitro Research Use Only

Not for resale without prior written consent from LifeSpan BioSciences, Inc.

Created on 9/23/2014

© 2014 LifeSpan BioSciences