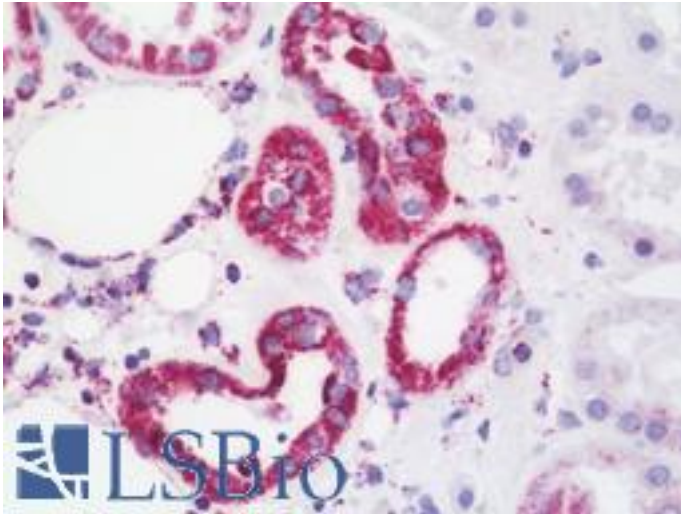


ATP5B Rabbit anti-Human Polyclonal (aa135-163) Antibody - LS-B10700 - LSBio

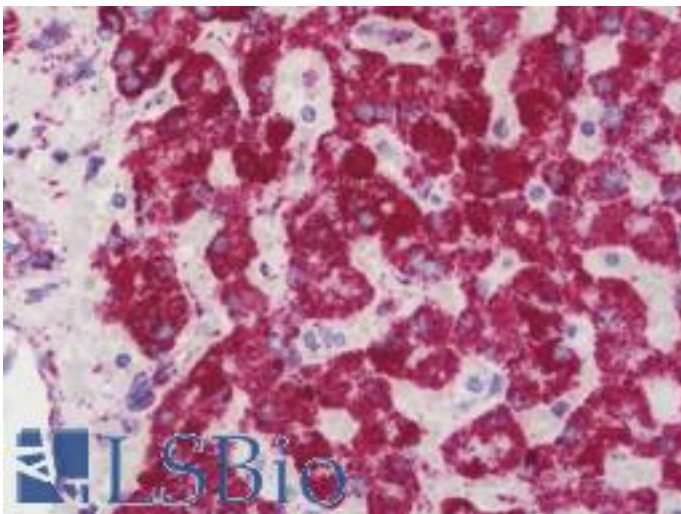
CatalogID:	LS-B10700
Validation:	This antibody replaces catalog number LS-C156653. It has been validated for use in the following assays: IHC-P.
Target:	ATP synthase, H ⁺ transporting, mitochondrial F1 complex, beta polypeptide (ATP5B)
Synonyms:	ATP5B Antibody, ATPMB Antibody, ATPSB Antibody, Beta-mtATPase Antibody, F0F1-ATP synthase beta subunit Antibody, ATP synthase beta subunit Antibody
Family / Subfamily:	Transporter / ATPase - F type
Host	ATP5B antibody was produced in Rabbit
Clonality:	Polyclonal
Immunogen Species:	ATP5B antibody was raised against Human
Antigen Type:	Synthetic peptide
Immunogen:	ATP5B antibody was raised against kLH-conjugated synthetic peptide from internal region of human ATP5B.
Specificity:	Human ATP5B
Epitope:	aa135-163
Reactivity:	Human
Purification:	Immunoaffinity purified
Presentation:	PBS, 0.09% sodium azide
Recommended Storage:	Maintain refrigerated at 2-8°C for up to 6 months. For long term storage store at -20°C.
Uses:	IHC - Paraffin (1:75), Western blot (1:1000), Flow Cytometry (1:10 - 1:50) (Optimal dilution to be determined by the researcher)
Size:	200 µl

Immunohistochemistry Image:



Human Kidney: Formalin-Fixed, Paraffin-Embedded (FFPE)

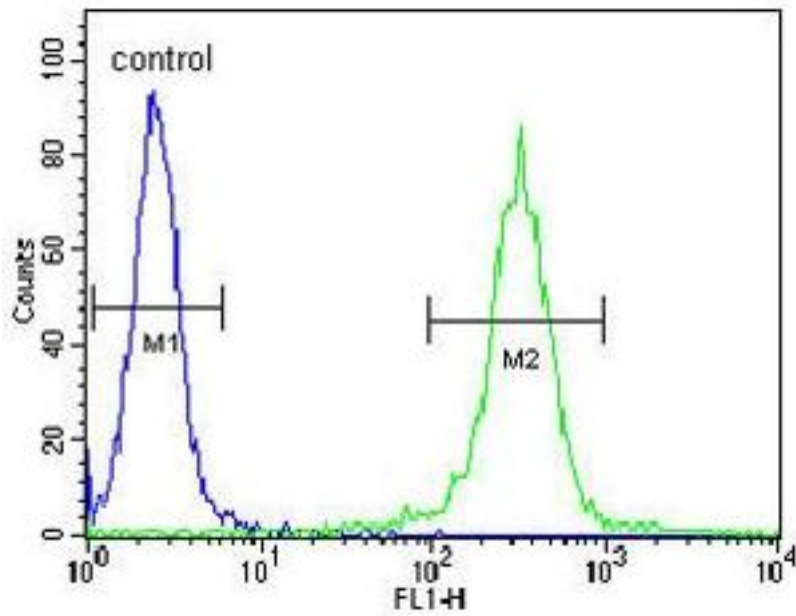
Immunohistochemistry Image:



Human Liver: Formalin-Fixed, Paraffin-Embedded (FFPE)

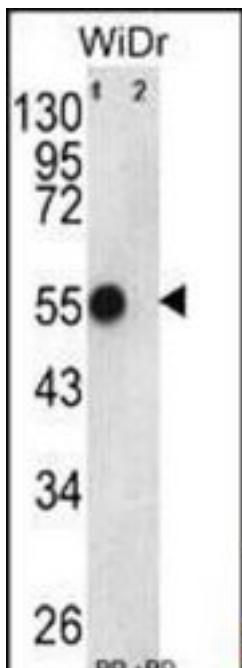
Flow Cytometry Image:

WiDr



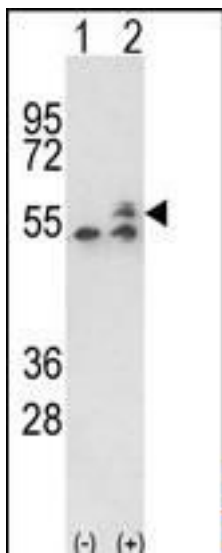
ATP5B Antibody (Center) flow cytometry of WiDr cells (right histogram) compared to a negative control cell (left histogram). FITC-conjugated goat-anti-rabbit secondary antibodies were used for the analysis.

Western Blot Image:



Western blot of ATP5B Antibody (Center) Pab pre-incubated without(lane 1) and with(lane 2) blocking peptide in WiDr cell line lysate. ATP5B (arrow) was detected using the purified Pab (1:60/250 dilution).

Western Blot Image:



Western blot of ATP5B (arrow) using rabbit polyclonal ATP5B Antibody (Center). 293 cell lysates (2 ug/lane) either nontransfected (Lane 1) or transiently transfected with the ATP5B gene (Lane 2).

Requested From:

Japan

Laboratory Reagent For In Vitro Research Use Only

Not for resale without prior written consent from LifeSpan BioSciences, Inc.

Created on 9/23/2014

© 2014 LifeSpan BioSciences