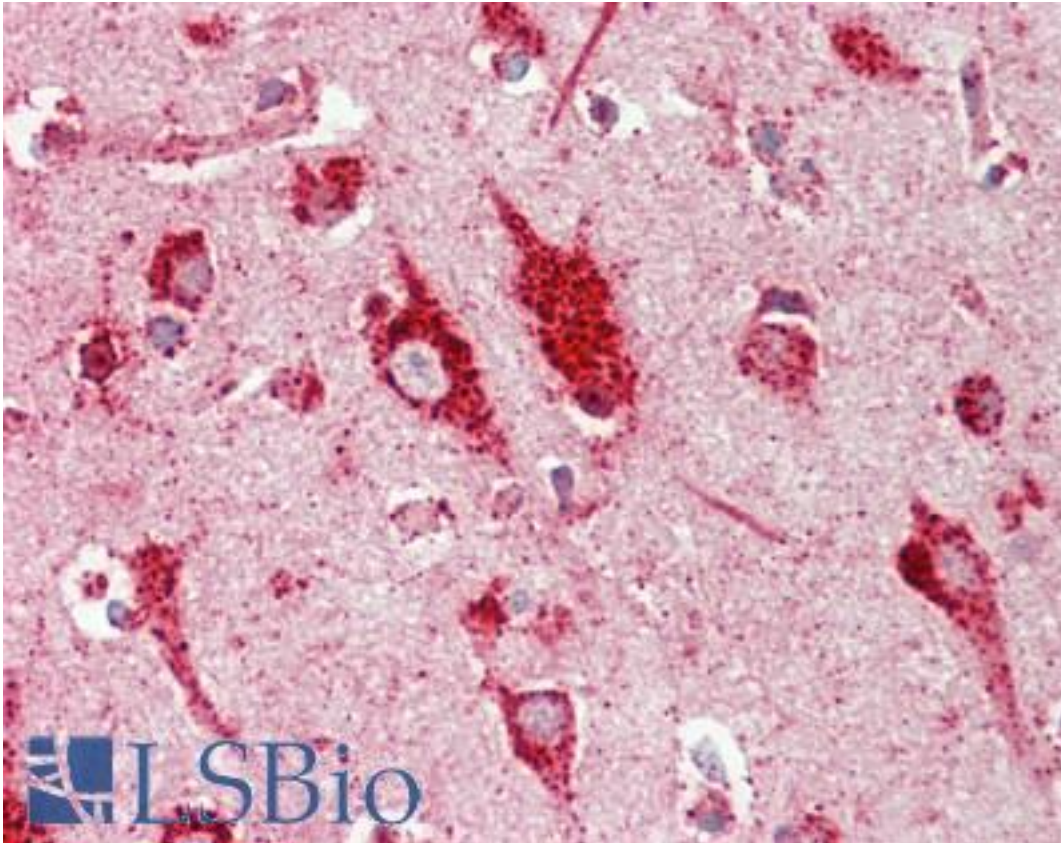


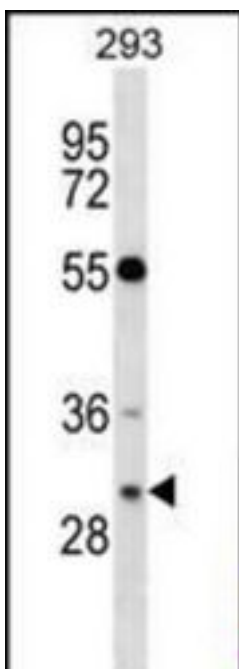
RASD2 / RHES / DEXRAS1 Rabbit anti-Human Polyclonal (aa85-114) Antibody - LS-B10692 - LSBio	
CatalogID:	LS-B10692
Validation:	This antibody replaces catalog number LS-C162454. It has been validated for use in the following assays: IHC-P.
Target:	RASD family, member 2 (RASD2)
Synonyms:	RASD2 Antibody, DEXRAS1 Antibody, GTP-binding protein Rhes Antibody, RASD family, member 2 Antibody, Rhes Antibody, TEM2 Antibody, Tumor endothelial marker 2 Antibody, MGC:4834 Antibody
Family / Subfamily:	Ras GTPase superfamily IPR001806 / not assigned-Ras GTPase superfamily IPR001806
Host	RASD2 antibody was produced in Rabbit
Clonality:	Polyclonal
Immunogen Species:	RASD2 / RHES / DEXRAS1 antibody was raised against Human
Antigen Type:	Synthetic peptide
Immunogen:	RASD2 / RHES / DEXRAS1 antibody was raised against kLH-conjugated synthetic peptide from internal region of human RASD2.
Specificity:	Human RHES / DEXRAS1
Epitope:	aa85-114
Reactivity:	Human
Purification:	Immunoaffinity purified
Presentation:	PBS, 0.09% sodium azide
Recommended Storage:	Maintain refrigerated at 2-8°C for up to 6 months. For long term storage store at -20°C.
Uses:	IHC - Paraffin (1:75), Western blot (1:1000) (Optimal dilution to be determined by the researcher)
Size:	200 µl

Immunohistochemistry Image:



Human Brain, Cortex: Formalin-Fixed, Paraffin-Embedded (FFPE)

Western Blot Image:



RASD2 Antibody (Center) Western blot of 293 cell line lysates (35 ug/lane). This demonstrates the RASD2 antibody detected the RASD2 protein (arrow).

Requested From:	Japan
Laboratory Reagent For In Vitro Research Use Only	
Not for resale without prior written consent from LifeSpan BioSciences, Inc.	
Created on 9/23/2014	
© 2014 LifeSpan BioSciences	