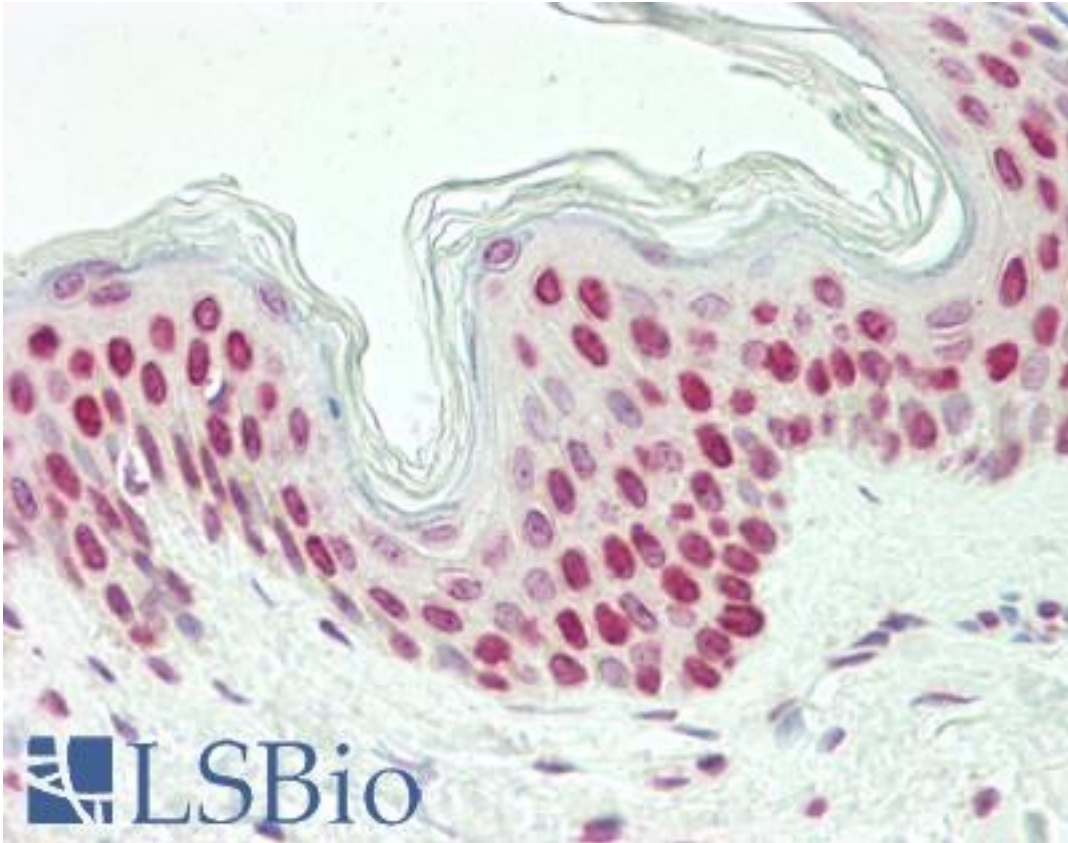


LHX6 Rabbit anti-Human Polyclonal (aa333-363) Antibody - LS-B10690 - LSBio

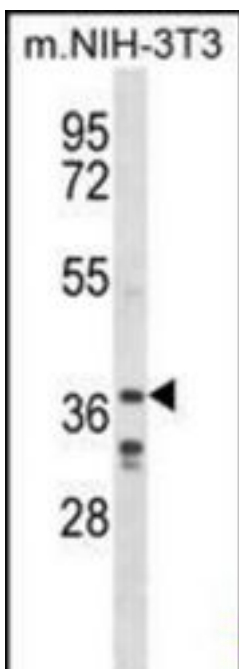
CatalogID:	LS-B10690
Validation:	This antibody replaces catalog number LS-C165764. It has been validated for use in the following assays: IHC-P.
Target:	LIM homeobox 6 (LHX6)
Synonyms:	LHX6 Antibody, LHX6.1 Antibody, LIM homeodomain protein 6.1 Antibody, LIM homeobox protein 6 Antibody, LIM/homeobox protein Lhx6 Antibody, LIM/homeobox protein Lhx6.1 Antibody, LIM homeobox 6 Antibody
Host	LHX6 antibody was produced in Rabbit
Clonality:	Polyclonal
Immunogen Species:	LHX6 antibody was raised against Human
Antigen Type:	Synthetic peptide
Immunogen:	LHX6 antibody was raised against kLH-conjugated synthetic peptide from C-terminal region of human LHX6.
Specificity:	Human LHX6
Epitope:	aa333-363
Reactivity:	Human, Mouse
Purification:	Immunoaffinity purified
Presentation:	PBS, 0.09% sodium azide
Recommended Storage:	Maintain refrigerated at 2-8°C for up to 6 months. For long term storage store at -20°C.
Uses:	IHC - Paraffin (1:75), Western blot (1:1000) (Optimal dilution to be determined by the researcher)
Size:	200 µl

Immunohistochemistry Image:



Human Skin: Formalin-Fixed, Paraffin-Embedded (FFPE)

Western Blot Image:



LHX6 Antibody (C-term) Western blot of mouse NIH-3T3 cell line lysates (35 ug/lane). This demonstrates the LHX6 antibody detected the LHX6 protein (arrow).

Requested From:	Japan
Laboratory Reagent For In Vitro Research Use Only	
Not for resale without prior written consent from LifeSpan BioSciences, Inc.	
Created on 9/23/2014	
© 2014 LifeSpan BioSciences	