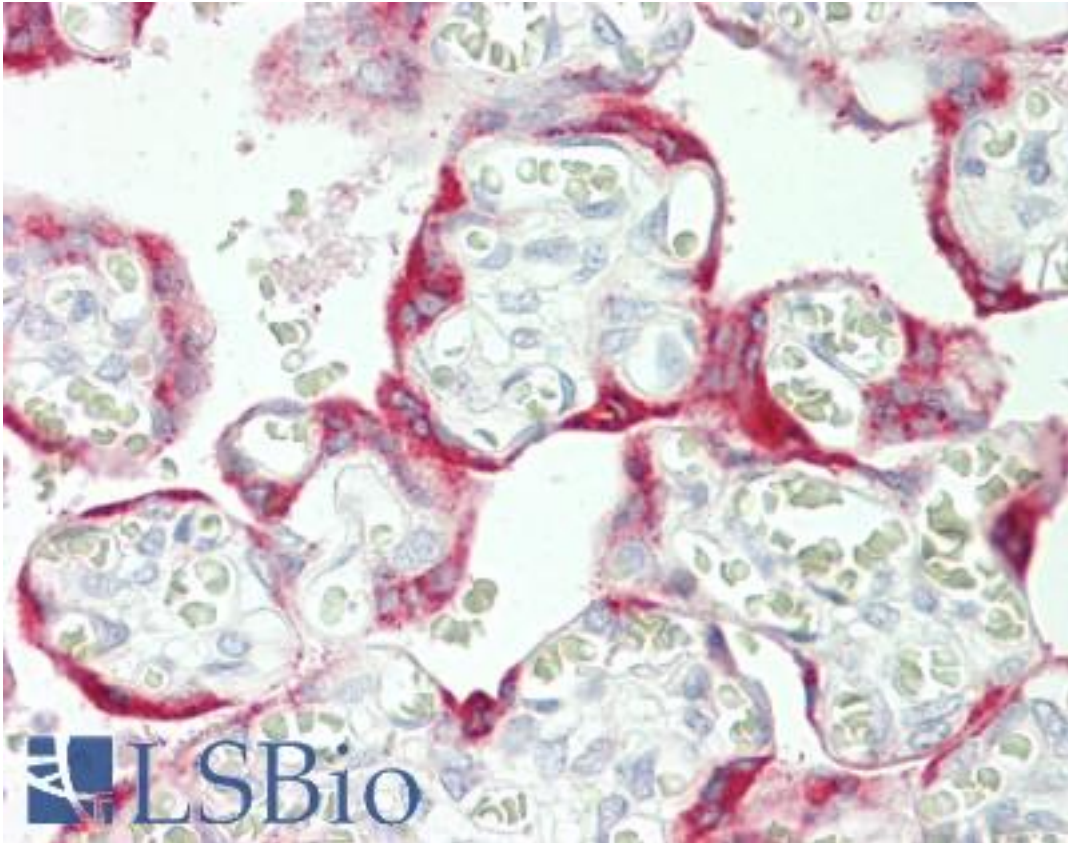


**GP78 / AMFR Rabbit anti-Human Polyclonal (aa370-400) Antibody - LS-B10689 - LSBio**

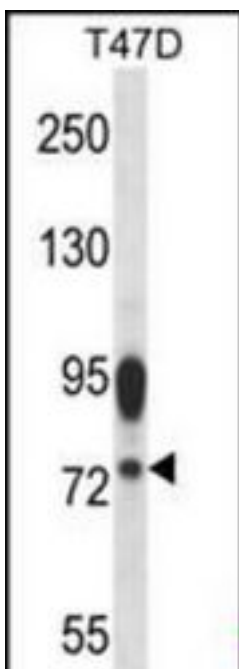
<b>CatalogID:</b>	LS-B10689
<b>Validation:</b>	This antibody replaces catalog number LS-C156309. It has been validated for use in the following assays: IHC-P.
<b>Target:</b>	autocrine motility factor receptor, E3 ubiquitin protein ligase (AMFR)
<b>Synonyms:</b>	AMFR Antibody, AMF receptor, isoform 1 Antibody, AMF receptor, isoform 2 Antibody, gp78 Antibody, RNF45 Antibody, RING finger protein 45 Antibody
<b>Host</b>	AMFR antibody was produced in Rabbit
<b>Clonality:</b>	Polyclonal
<b>Immunogen Species:</b>	GP78 / AMFR antibody was raised against Human
<b>Antigen Type:</b>	Synthetic peptide
<b>Immunogen:</b>	GP78 / AMFR antibody was raised against kLH-conjugated synthetic peptide from internal region of human AMFR.
<b>Specificity:</b>	Human GP78 / AMFR
<b>Epitope:</b>	aa370-400
<b>Reactivity:</b>	Human
<b>Purification:</b>	Immunoaffinity purified
<b>Presentation:</b>	PBS, 0.09% sodium azide
<b>Recommended Storage:</b>	Maintain refrigerated at 2-8°C for up to 6 months. For long term storage store at -20°C.
<b>Uses:</b>	IHC - Paraffin (1:50), Western blot (1:1000) (Optimal dilution to be determined by the researcher)
<b>Size:</b>	200 µl

**Immunohistochemistry Image:**



Human Placenta: Formalin-Fixed, Paraffin-Embedded (FFPE)

**Western Blot Image:**



AMFR Antibody (Center) Western blot of T47D cell line lysates (35 ug/lane). This demonstrates the AMFR antibody detected the AMFR protein (arrow).

<b>Requested From:</b>	Japan
Laboratory Reagent For In Vitro Research Use Only	
Not for resale without prior written consent from LifeSpan BioSciences, Inc.	
Created on 9/23/2014	
© 2014 LifeSpan BioSciences	