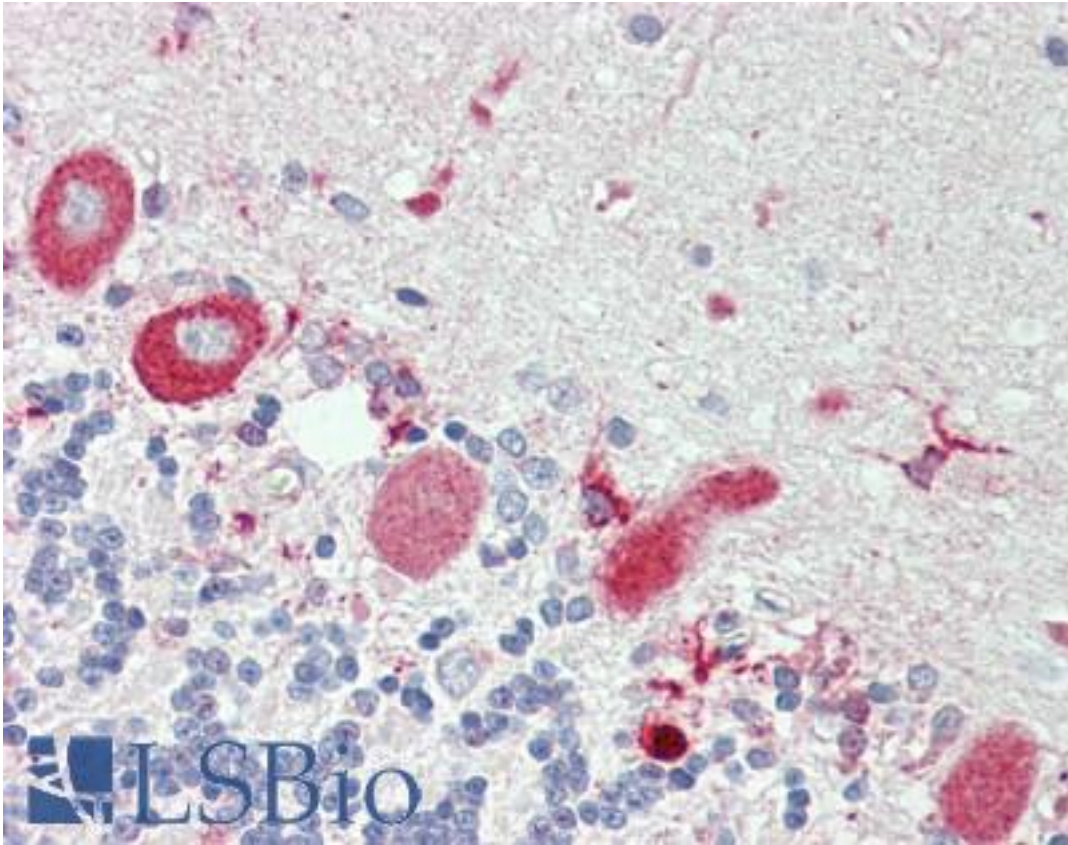


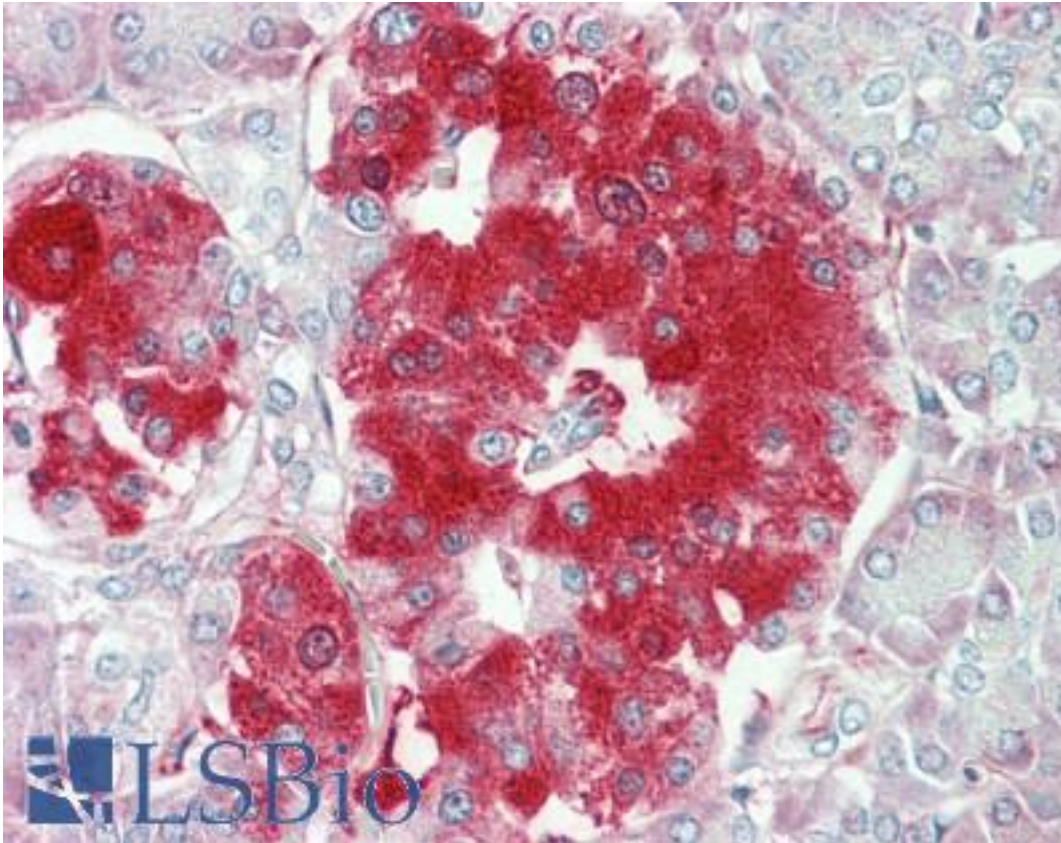
| TNFRSF21 / DR6 Rabbit anti-Human Polyclonal (aa355-385) Antibody - LS-B10688 - LSBio |   |
|--|---|
| <b>CatalogID:</b>  | LS-B10688   |
| <b>Validation:</b>   | This antibody replaces catalog number LS-C157234. It has been validated for use in the following assays: IHC-P.   |
| <b>Target:</b>   | tumor necrosis factor receptor superfamily, member 21 (TNFRSF21)  |
| <b>Synonyms:</b>   | TNFRSF21 Antibody, CD358 antigen Antibody, BM-018 Antibody, DR6 Antibody, TNFR-related death receptor 6 Antibody, CD358 Antibody, Death receptor 6 Antibody |
| <b>Family / Subfamily:</b>   | TNF Receptor / not assigned-TNF Receptor  |
| <b>Host</b>  | TNFRSF21 antibody was produced in Rabbit  |
| <b>Clonality:</b>  | Polyclonal  |
| <b>Immunogen Species:</b>  | TNFRSF21 / DR6 antibody was raised against Human  |
| <b>Antigen Type:</b>   | Synthetic peptide   |
| <b>Immunogen:</b>  | TNFRSF21 / DR6 antibody was raised against kLH-conjugated synthetic peptide from internal region of human TNFRSF21.   |
| <b>Specificity:</b>  | Human TNFRSF21 / DR6  |
| <b>Epitope:</b>  | aa355-385   |
| <b>Reactivity:</b>   | Human   |
| <b>Purification:</b>   | Immunoaffinity purified   |
| <b>Presentation:</b>   | PBS, 0.09% sodium azide   |
| <b>Recommended Storage:</b>  | Maintain refrigerated at 2-8°C for up to 6 months. For long term storage store at -20°C.  |
| <b>Uses:</b>   | IHC - Paraffin (1:75), Western blot (1:1000) (Optimal dilution to be determined by the researcher)  |
| <b>Size:</b>   | 200 µl  |

**Immunohistochemistry Image:**



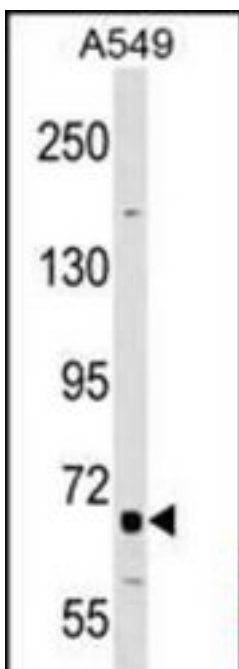
Human Brain, Cerebellum: Formalin-Fixed, Paraffin-Embedded (FFPE)

**Immunohistochemistry Image:**



Human Pancreas: Formalin-Fixed, Paraffin-Embedded (FFPE)

**Western Blot Image:**



TNFRSF21 Antibody (Center) Western blot of A549 cell line lysates (35 ug/lane). This demonstrates the TNFRSF21 antibody detected the TNFRSF21 protein (arrow).

|  |       |
|--|-------|
| <b>Requested From:</b>   | Japan |
| Laboratory Reagent For In Vitro Research Use Only                            |       |
| Not for resale without prior written consent from LifeSpan BioSciences, Inc. |       |
| Created on 9/23/2014   |       |
| © 2014 LifeSpan BioSciences  |       |