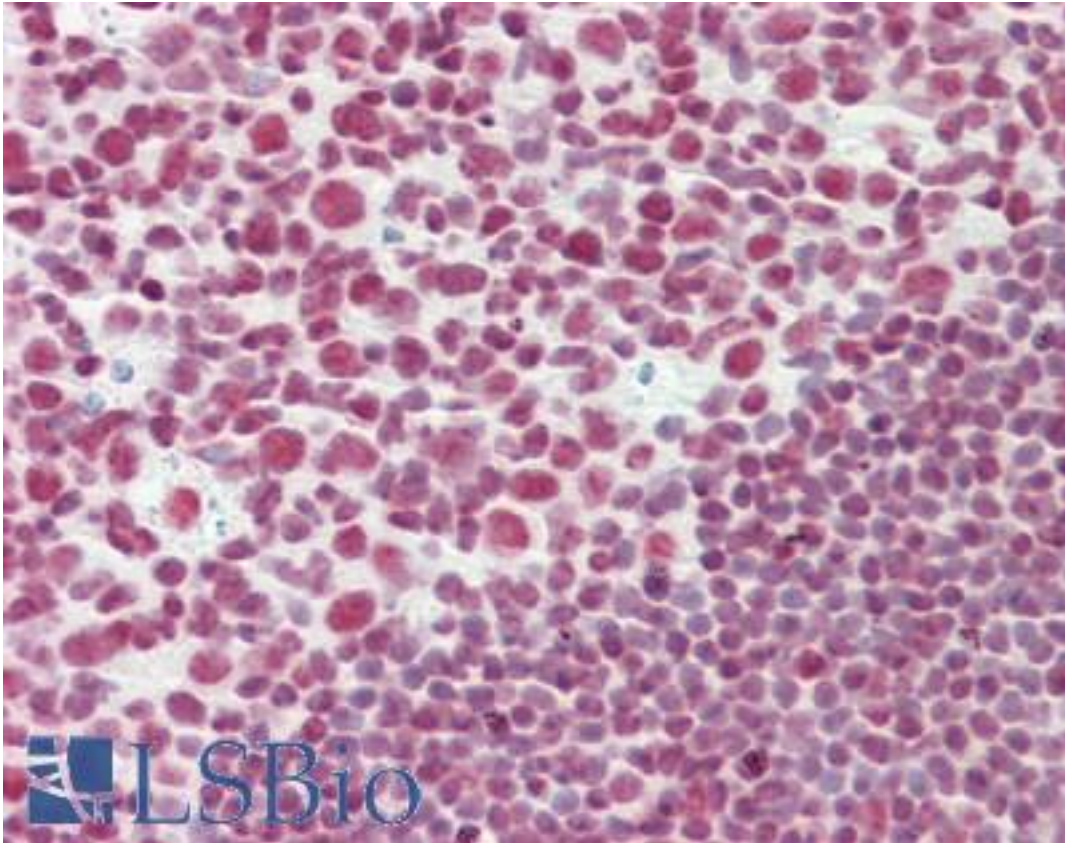


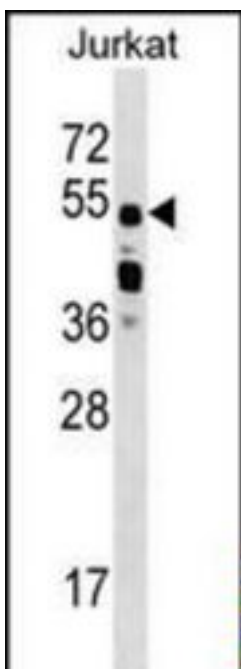
CELF2 / CUGBP2 Rabbit anti-Human Polyclonal (aa480-508) Antibody - LS-B10687 - LSBio	
CatalogID:	LS-B10687
Validation:	This antibody replaces catalog number LS-C159419. It has been validated for use in the following assays: IHC-P.
Target:	CUGBP, Elav-like family member 2 (CELF2)
Synonyms:	CELF2 Antibody, BRUNOL3 Antibody, CELF-2 Antibody, Bruno-like protein 3 Antibody, CUG-BP2 Antibody, CUGBP2 Antibody, ETR-3 Antibody, HNAPOR Antibody, NAPOR Antibody, RNA-binding protein BRUNOL-3 Antibody, NAPOR-2 Antibody, ETR3 Antibody
Host	CELF2 antibody was produced in Rabbit
Clonality:	Polyclonal
Immunogen Species:	CELF2 / CUGBP2 antibody was raised against Human
Antigen Type:	Synthetic peptide
Immunogen:	CELF2 / CUGBP2 antibody was raised against kLH-conjugated synthetic peptide from C-terminal region of human CUGBP2.
Specificity:	Human ETR3 / CUGBP2
Epitope:	aa480-508
Reactivity:	Human
Purification:	Immunoaffinity purified
Presentation:	PBS, 0.09% sodium azide
Recommended Storage:	Maintain refrigerated at 2-8°C for up to 6 months. For long term storage store at -20°C.
Uses:	IHC (1:75), Western blot (1:1000) (Optimal dilution to be determined by the researcher)
Size:	200 µl

Immunohistochemistry Image:



Human Tonsil: Formalin-Fixed, Paraffin-Embedded (FFPE)

Western Blot Image:



CUGBP2 Antibody (C-term) Western blot of Jurkat cell line lysates (35 ug/lane). This demonstrates the CUGBP2 antibody detected the CUGBP2 protein (arrow).

Requested From:	Japan
Laboratory Reagent For In Vitro Research Use Only	
Not for resale without prior written consent from LifeSpan BioSciences, Inc.	
Created on 9/23/2014	
© 2014 LifeSpan BioSciences	