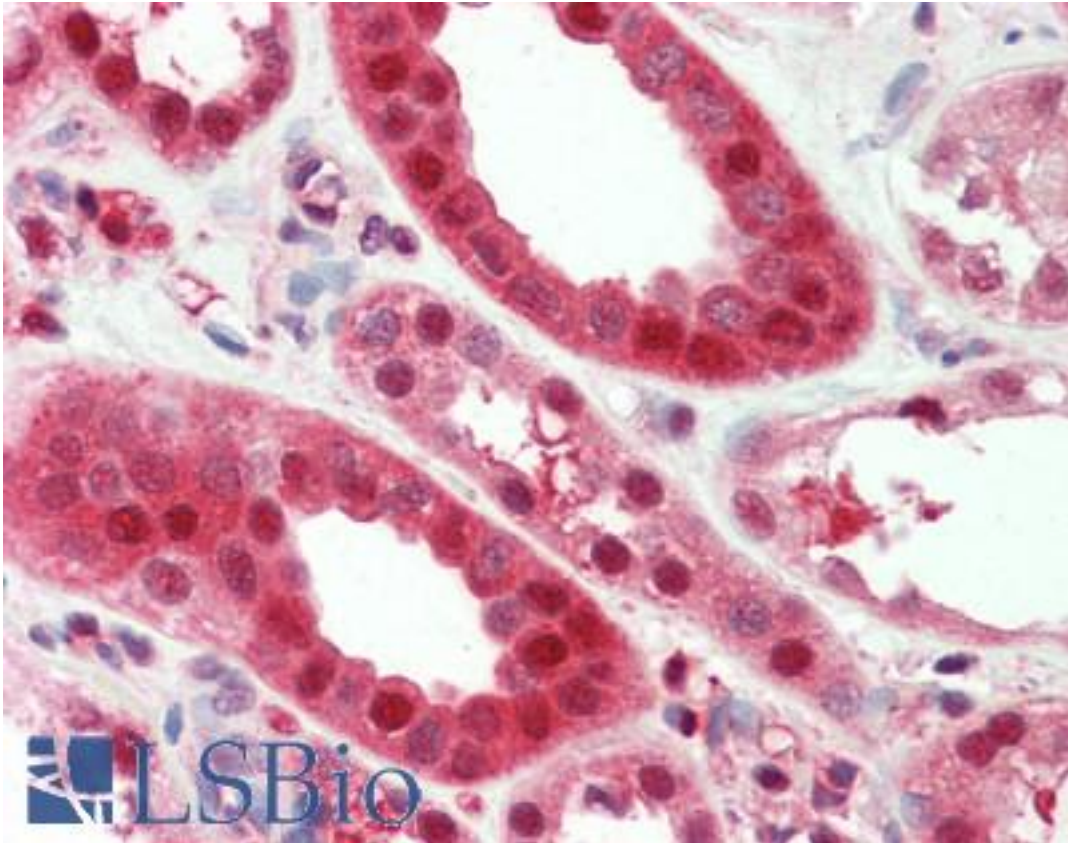


SERPINA6 / CBG Rabbit anti-Human Polyclonal (aa200-229) Antibody - LS-B10686 - LSBio

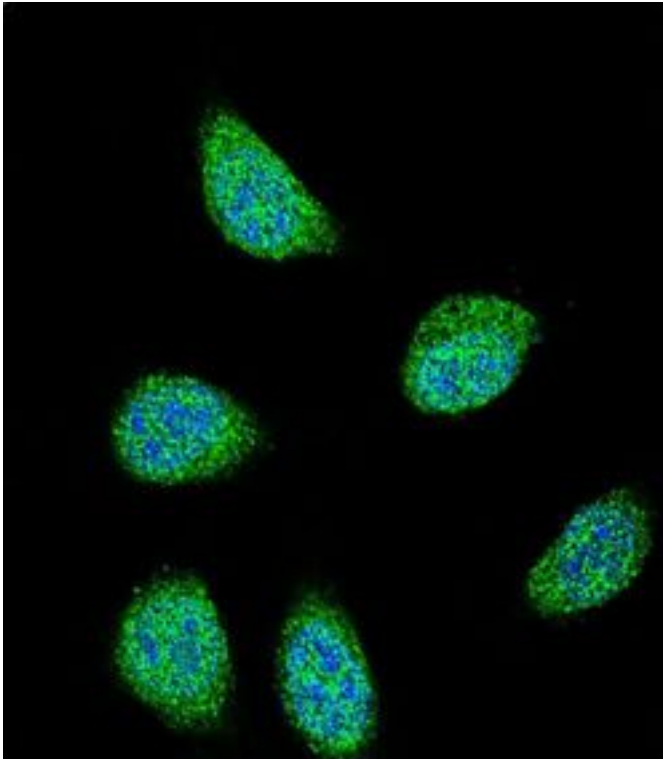
CatalogID:	LS-B10686
Validation:	This antibody replaces catalog number LS-C168981. It has been validated for use in the following assays: IHC-P.
Target:	serpin peptidase inhibitor, clade A (alpha-1 antiproteinase, antitrypsin), member 6 (SERPINA6)
Synonyms:	SERPINA6 Antibody, Transcortin Antibody, CBG Antibody, Serpin A6 Antibody
Host	SERPINA6 antibody was produced in Rabbit
Clonality:	Polyclonal
Immunogen Species:	SERPINA6 / CBG antibody was raised against Human
Antigen Type:	Synthetic peptide
Immunogen:	SERPINA6 / CBG antibody was raised against kLH-conjugated synthetic peptide from internal region of human SERPINA6.
Specificity:	Human CBG / SERPINA6
Epitope:	aa200-229
Reactivity:	Human
Purification:	Immunoaffinity purified
Presentation:	PBS, 0.09% sodium azide
Recommended Storage:	Maintain refrigerated at 2-8°C for up to 6 months. For long term storage store at -20°C.
Uses:	IHC - Paraffin (1:100), Immunofluorescence (1:10 - 1:50), Western blot (1:1000) (Optimal dilution to be determined by the researcher)
Size:	200 µl

Immunohistochemistry Image:



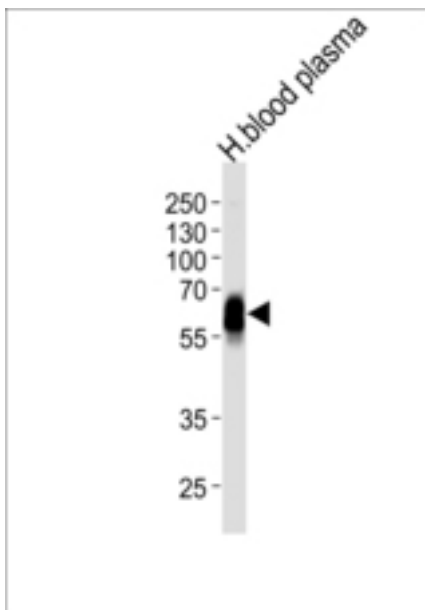
Human Kidney: Formalin-Fixed, Paraffin-Embedded (FFPE)

Immunofluorescence Image:



Confocal immunofluorescence of SERPINA6 Antibody (Center) with 293 cell followed by Alexa Fluor 488-conjugated goat anti-rabbit IgG (green). DAPI was used to stain the cell nuclear (blue).

Western Blot Image:



Western blot analysis of human blood plasma lysate (35 ug/lane) using SERPINA6 Antibody.

Requested From:

Japan

Laboratory Reagent For In Vitro Research Use Only

Not for resale without prior written consent from LifeSpan BioSciences, Inc.

Created on 9/23/2014

© 2014 LifeSpan BioSciences