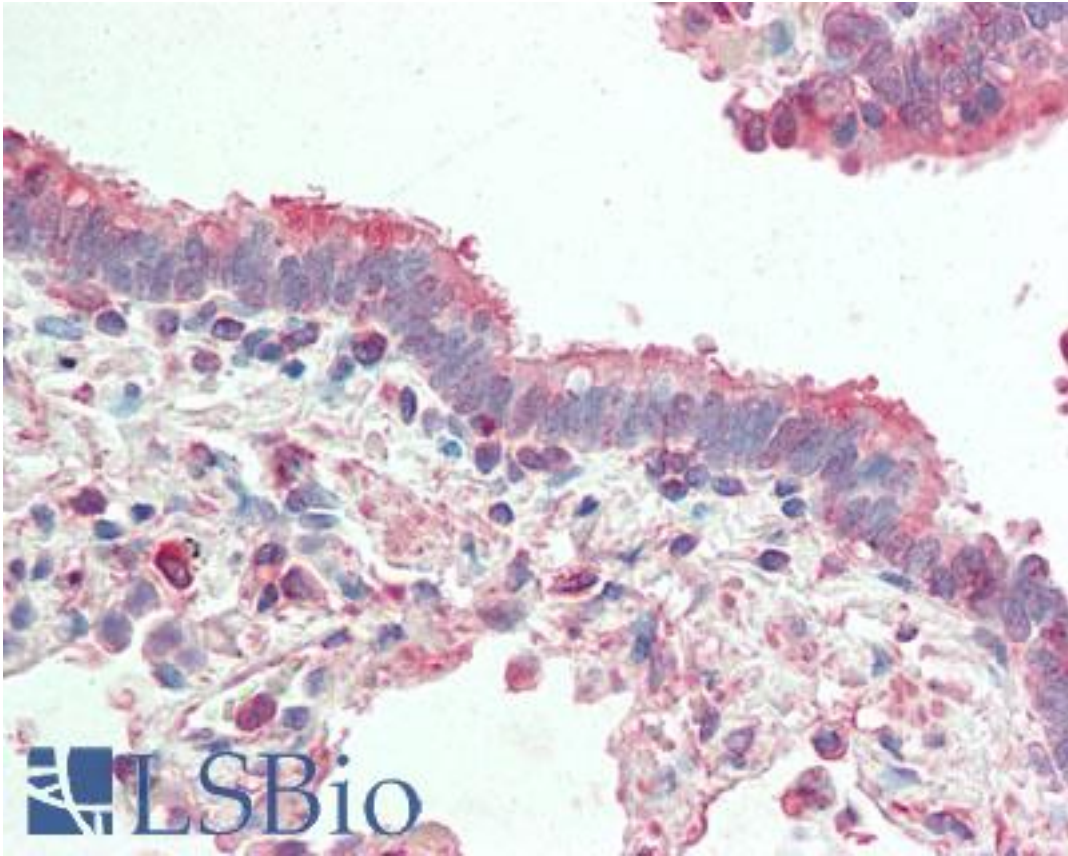


APG4B / ATG4B Mouse anti-Human Monoclonal Antibody - LS-B10684 - LSBio

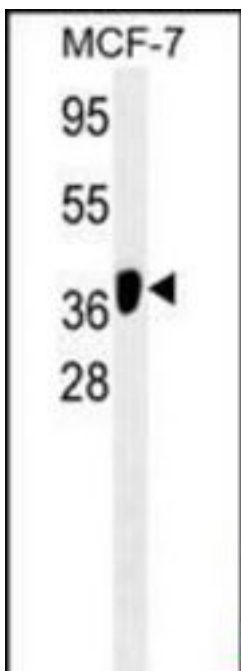
CatalogID:	LS-B10684
Validation:	This antibody replaces catalog number LS-C156586. It has been validated for use in the following assays: IHC-P.
Target:	autophagy related 4B, cysteine peptidase (ATG4B)
Synonyms:	ATG4B Antibody, APG4 autophagy 4 homolog B Antibody, AUTL1 Antibody, Autophagin-1 Antibody, Cysteine protease ATG4B Antibody, HAPG4B Antibody, APG4B Antibody, KIAA0943 Antibody
Host	ATG4B antibody was produced in Mouse
Clonality:	Monoclonal
Isotype:	IgM
Immunogen Species:	APG4B / ATG4B antibody was raised against Human
Antigen Type:	Recombinant protein
Immunogen:	APG4B / ATG4B antibody was raised against aTG4B recombinant protein.
Specificity:	Human APG4B / ATG4B
Reactivity:	Human
Purification:	Euglobulin precipitation
Presentation:	PBS, 0.09% sodium azide
Recommended Storage:	Maintain refrigerated at 2-8°C for up to 6 months. For long term storage store at -20°C.
Uses:	IHC - Paraffin (1:50), Western blot (1:100 - 1:250) (Optimal dilution to be determined by the researcher)
Size:	200 µl

Immunohistochemistry Image:



Human Lung, Respiratory Epithelium: Formalin-Fixed, Paraffin-Embedded (FFPE)

Western Blot Image:



ATG4B antibody Western blot of MCF-7 cell line lysates (35 ug/lane). This demonstrates the ATG4B/MB10290 antibody detected the ATG4B protein (arrow).

Requested From:	Japan
Laboratory Reagent For In Vitro Research Use Only	
Not for resale without prior written consent from LifeSpan BioSciences, Inc.	
Created on 9/23/2014	
© 2014 LifeSpan BioSciences	