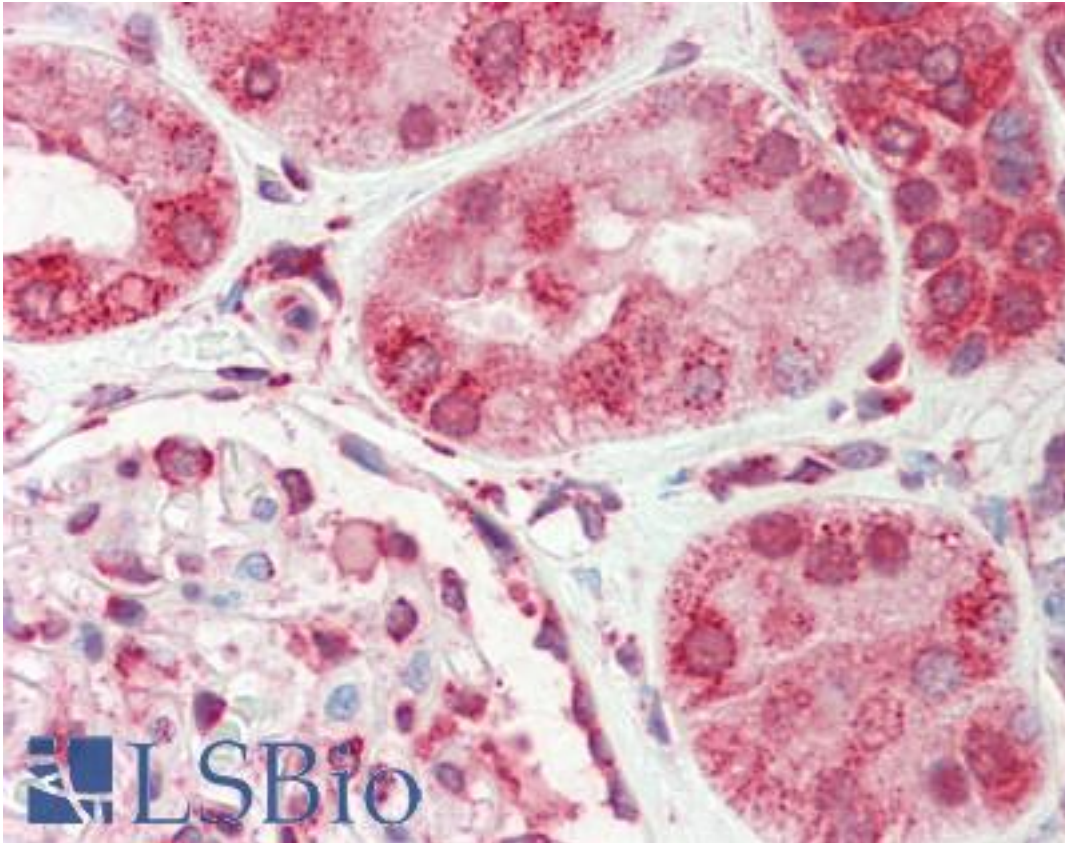


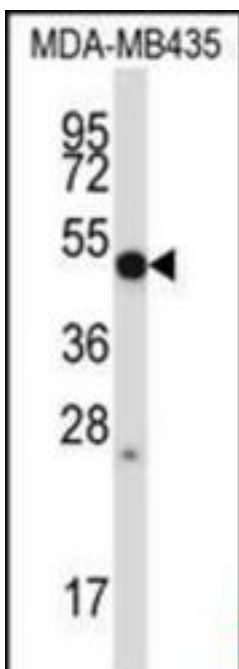
MMP28 / MMP-28 Rabbit anti-Human Polyclonal (aa194-223) Antibody - LS-B10682 - LSBio	
CatalogID:	LS-B10682
Validation:	This antibody replaces catalog number LS-C164246. It has been validated for use in the following assays: IHC-P.
Target:	matrix metalloproteinase 28 (MMP28)
Synonyms:	MMP28 Antibody, Matrix metalloproteinase 28 Antibody, Matrix metalloproteinase-28 Antibody, Matrix metalloproteinase 28 Antibody, MMP-28 Antibody, MMP-25 Antibody, EPILYSIN Antibody, MM28 Antibody
Family / Subfamily:	Protease / Metalloproteinase Other
Host	MMP28 antibody was produced in Rabbit
Clonality:	Polyclonal
Immunogen Species:	MMP28 / MMP-28 antibody was raised against Human
Antigen Type:	Synthetic peptide
Immunogen:	MMP28 / MMP-28 antibody was raised against kLH-conjugated synthetic peptide from internal region of human MMP28.
Specificity:	Human MMP-28
Epitope:	aa194-223
Reactivity:	Human
Purification:	Immunoaffinity purified
Presentation:	PBS, 0.09% sodium azide
Recommended Storage:	Maintain refrigerated at 2-8°C for up to 6 months. For long term storage store at -20°C.
Uses:	IHC - Paraffin (1:100), Western blot (1:1000) (Optimal dilution to be determined by the researcher)
Size:	200 µl

Immunohistochemistry Image:



Human Kidney: Formalin-Fixed, Paraffin-Embedded (FFPE)

Western Blot Image:



MMP28 Antibody (Center) Western blot of MDA-MB435 cell line lysates (35 ug/lane). This demonstrates the MMP28 antibody detected the MMP28 protein (arrow).

Requested From:	Japan
Laboratory Reagent For In Vitro Research Use Only	
Not for resale without prior written consent from LifeSpan BioSciences, Inc.	
Created on 9/23/2014	
© 2014 LifeSpan BioSciences	