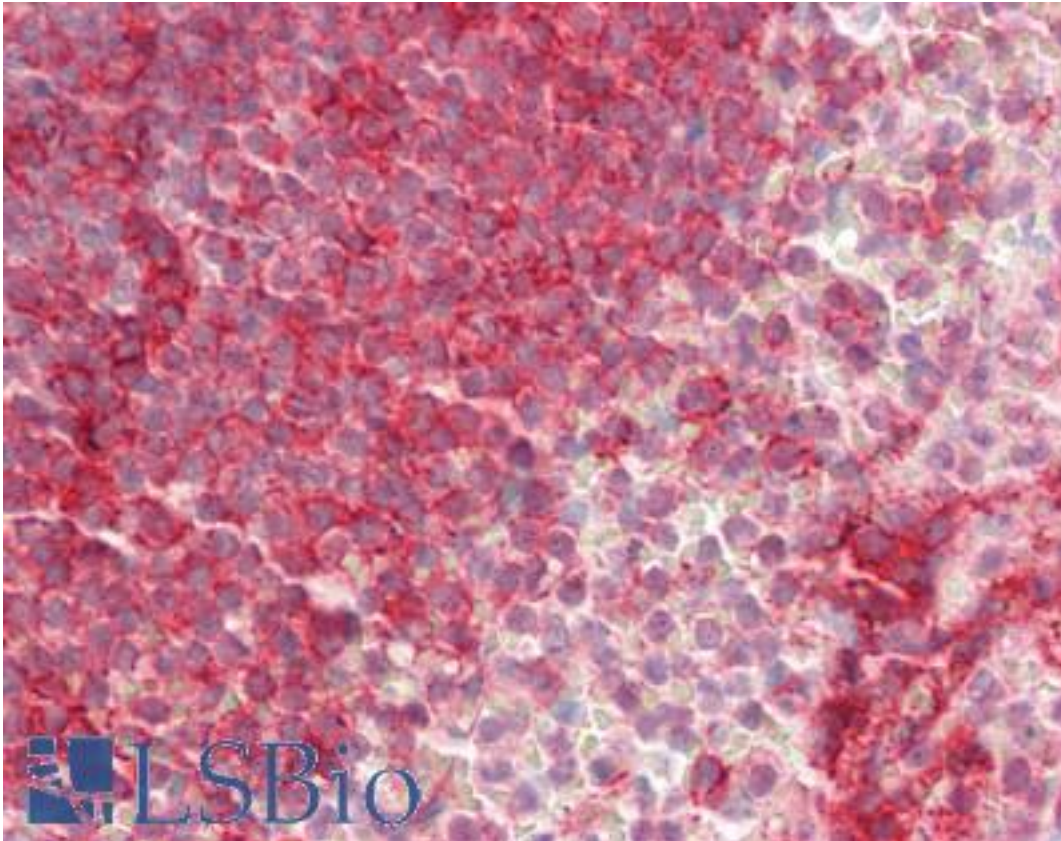


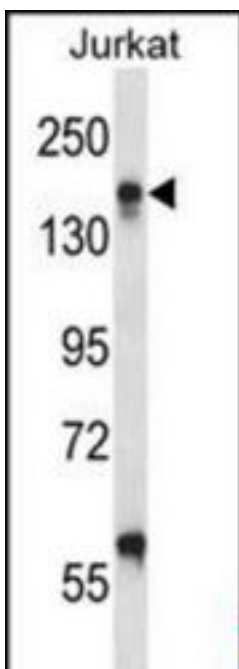
LFA-1 / CD11A Rabbit anti-Human Polyclonal (aa721-751) Antibody - LS-B10681 - LSBio	
CatalogID:	LS-B10681
Validation:	This antibody replaces catalog number LS-C165320. It has been validated for use in the following assays: IHC-P.
Target:	integrin, alpha L (antigen CD11A (p180), lymphocyte function-associated antigen 1; alpha polypeptide) (ITGAL)
Synonyms:	ITGAL Antibody, CD11A Antibody, Integrin alpha-L Antibody, LFA-1 alpha Antibody, LFA-1A Antibody, Integrin gene promoter Antibody, Alpha polypeptide) Antibody, CD11a antigen Antibody, LFA-1 Antibody, LFA1A Antibody
Family / Subfamily:	Integrin / not assigned-Integrin
Host	ITGAL antibody was produced in Rabbit
Clonality:	Polyclonal
Immunogen Species:	LFA-1 / CD11A antibody was raised against Human
Antigen Type:	Synthetic peptide
Immunogen:	LFA-1 / CD11A antibody was raised against KLH-conjugated synthetic peptide from internal region of human ITGAL.
Specificity:	Human LFA-1 / CD11A
Epitope:	aa721-751
Reactivity:	Human
Purification:	Immunoaffinity purified
Presentation:	PBS, 0.09% sodium azide
Recommended Storage:	Maintain refrigerated at 2-8°C for up to 6 months. For long term storage store at -20°C.
Uses:	IHC - Paraffin (1:100), Western blot (1:1000) (Optimal dilution to be determined by the researcher)
Size:	200 µl

Immunohistochemistry Image:



Human Spleen: Formalin-Fixed, Paraffin-Embedded (FFPE)

Western Blot Image:



ITGAL Antibody (Center) Western blot of Jurkat cell line lysates (35 ug/lane). This demonstrates the ITGAL antibody detected the ITGAL protein (arrow).

Requested From:	Japan
Laboratory Reagent For In Vitro Research Use Only	
Not for resale without prior written consent from LifeSpan BioSciences, Inc.	
Created on 9/23/2014	
© 2014 LifeSpan BioSciences	