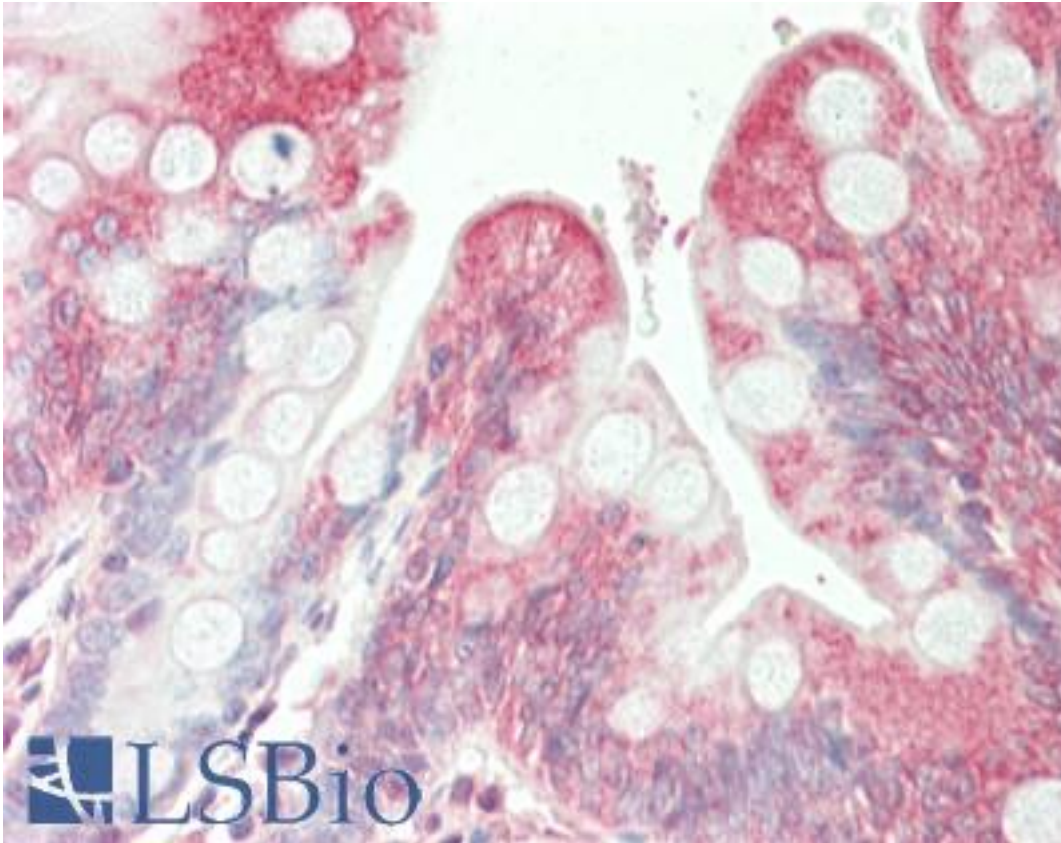


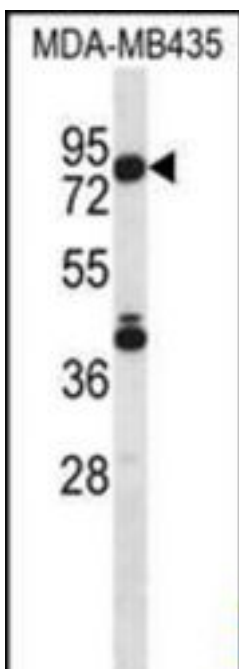
SGPL1 Rabbit anti-Human Polyclonal (aa79-109) Antibody - LS-B10679 - LSBio	
CatalogID:	LS-B10679
Validation:	This antibody replaces catalog number LS-C169047. It has been validated for use in the following assays: IHC-P.
Target:	sphingosine-1-phosphate lyase 1 (SGPL1)
Synonyms:	SGPL1 Antibody, KIAA1252 Antibody, S1PL Antibody, SP-lyase 1 Antibody, HSPL Antibody, SPL Antibody, SPL 1 Antibody
Host	SGPL1 antibody was produced in Rabbit
Clonality:	Polyclonal
Immunogen Species:	SGPL1 antibody was raised against Human
Antigen Type:	Synthetic peptide
Immunogen:	SGPL1 antibody was raised against kLH-conjugated synthetic peptide from N-terminal region of human SGPL1.
Specificity:	Human SGPL1
Epitope:	aa79-109
Reactivity:	Human
Purification:	Immunoaffinity purified
Presentation:	PBS, 0.09% sodium azide
Recommended Storage:	Maintain refrigerated at 2-8°C for up to 6 months. For long term storage store at -20°C.
Uses:	IHC - Paraffin (1:75), Western blot (1:1000) (Optimal dilution to be determined by the researcher)
Size:	200 µl

Immunohistochemistry Image:



Human Small Intestine: Formalin-Fixed, Paraffin-Embedded (FFPE)

Western Blot Image:



SGPL1 Antibody (N-term) Western blot of MDA-MB435 cell line lysates (35 ug/lane). This demonstrates the SGPL1 antibody detected the SGPL1 protein (arrow).

Requested From:	Japan
Laboratory Reagent For In Vitro Research Use Only	
Not for resale without prior written consent from LifeSpan BioSciences, Inc.	
Created on 9/23/2014	
© 2014 LifeSpan BioSciences	