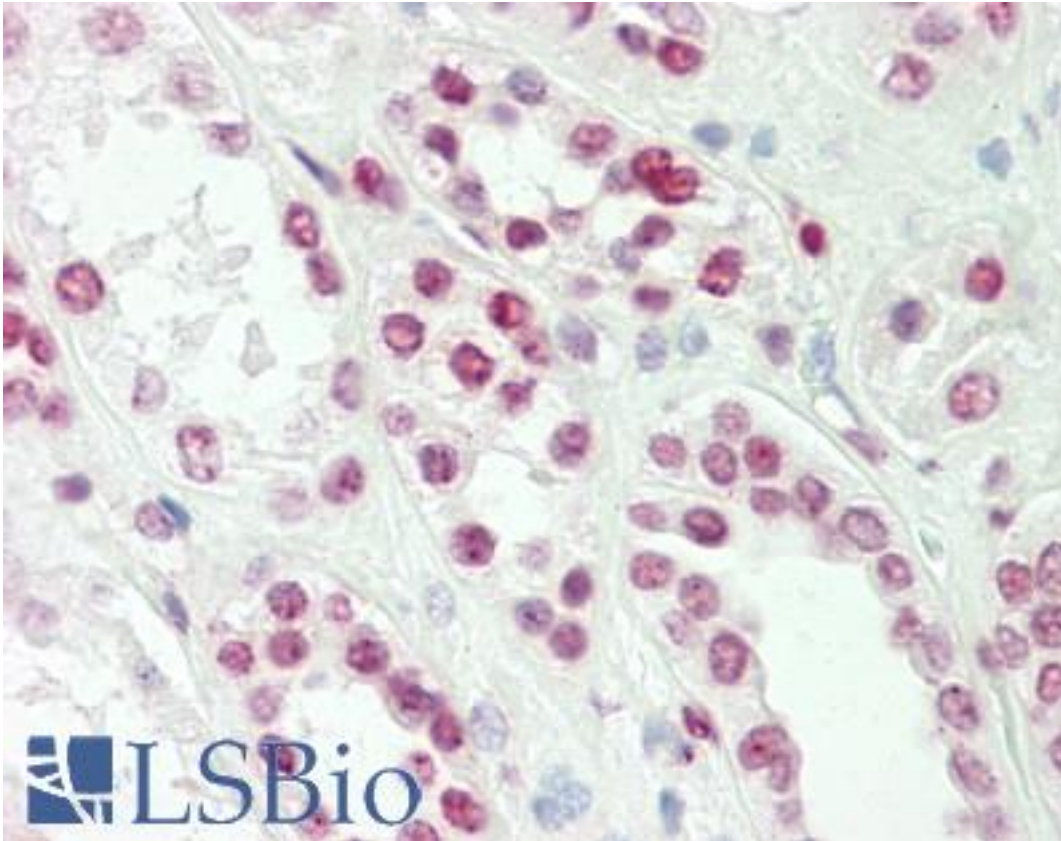


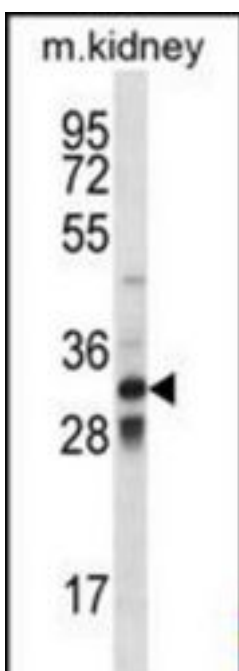
TLX1 / HOX11 Rabbit anti-Human Polyclonal (aa162-191) Antibody - LS-B10677 - LSBio	
CatalogID:	LS-B10677
Validation:	This antibody replaces catalog number LS-C161925. It has been validated for use in the following assays: IHC-P.
Target:	T-cell leukemia homeobox 1 (TLX1)
Synonyms:	TLX1 Antibody, Homeobox protein Hox-11 Antibody, HOX11 Antibody, T-cell leukemia homeobox 1 Antibody, Proto-oncogene TCL-3 Antibody, TCL3 Antibody, T-cell leukemia, homeobox 1 Antibody
Host	TLX1 antibody was produced in Rabbit
Clonality:	Polyclonal
Immunogen Species:	TLX1 / HOX11 antibody was raised against Human
Antigen Type:	Synthetic peptide
Immunogen:	TLX1 / HOX11 antibody was raised against kLH-conjugated synthetic peptide from internal region of human TLX1.
Specificity:	Human HOX11
Epitope:	aa162-191
Reactivity:	Human, Mouse
Purification:	Immunoaffinity purified
Presentation:	PBS, 0.09% sodium azide
Recommended Storage:	Maintain refrigerated at 2-8°C for up to 6 months. For long term storage store at -20°C.
Uses:	IHC - Paraffin (1:50), Western blot (1:1000) (Optimal dilution to be determined by the researcher)
Size:	200 µl

Immunohistochemistry Image:



Human Kidney: Formalin-Fixed, Paraffin-Embedded (FFPE)

Western Blot Image:



TLX1 Antibody (Center) Western blot of mouse kidney tissue lysates (35 ug/lane). This demonstrates the TLX1 antibody detected the TLX1 protein (arrow).

Requested From:	Japan
Laboratory Reagent For In Vitro Research Use Only	
Not for resale without prior written consent from LifeSpan BioSciences, Inc.	
Created on 9/23/2014	
© 2014 LifeSpan BioSciences	