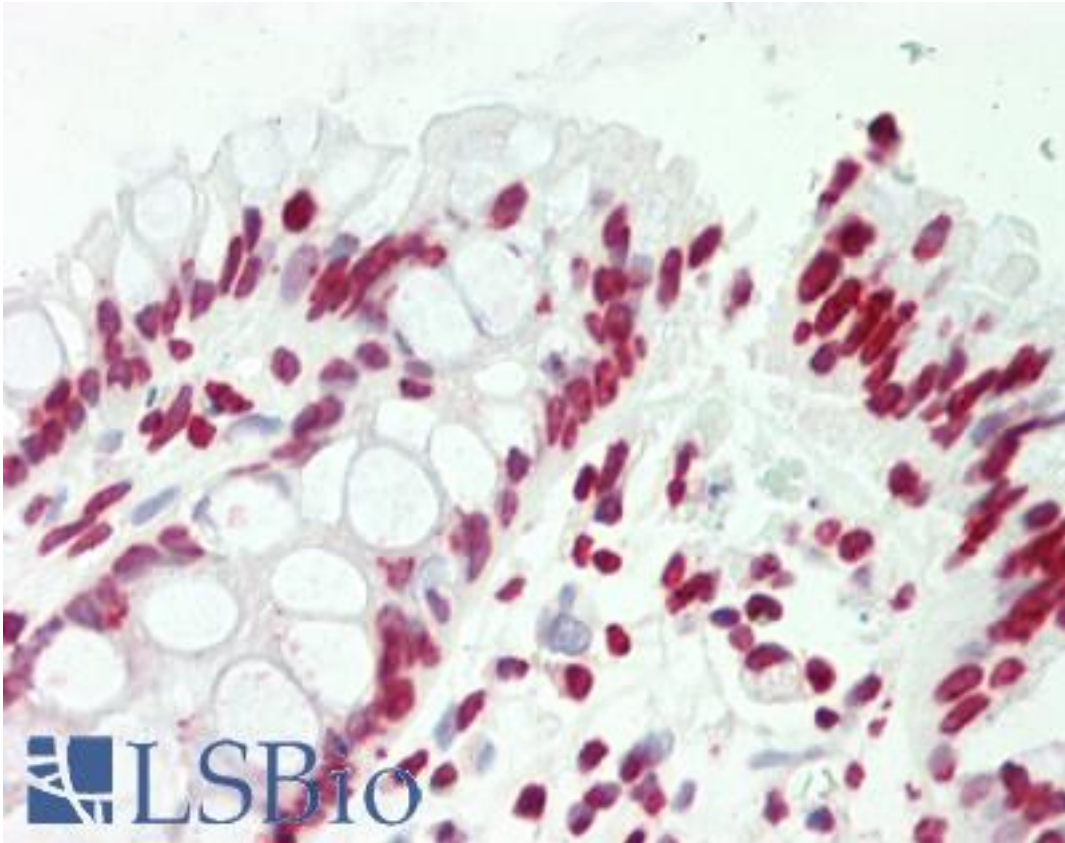


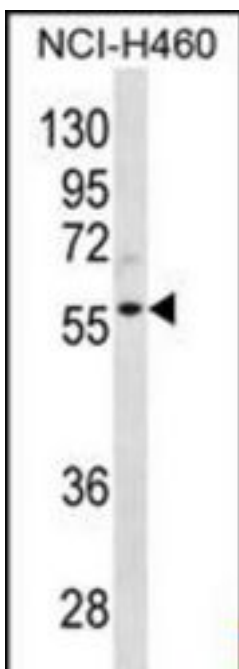
CCNL2 / Cyclin L2 Rabbit anti-Human Polyclonal (aa345-374) Antibody - LS-B10676 - LSBio	
CatalogID:	LS-B10676
Validation:	This antibody replaces catalog number LS-C168482. It has been validated for use in the following assays: IHC-P.
Target:	cyclin L2 (CCNL2)
Synonyms:	CCNL2 Antibody, ANIA-6B Antibody, CCNM Antibody, Cyclin M Antibody, HLA-ISO Antibody, PCEE Antibody, SB138 Antibody, Cyclin L2 Antibody, Cyclin-L2 Antibody, HCLA-ISO Antibody
Host	CCNL2 antibody was produced in Rabbit
Clonality:	Polyclonal
Immunogen Species:	CCNL2 / Cyclin L2 antibody was raised against Human
Antigen Type:	Synthetic peptide
Immunogen:	CCNL2 / Cyclin L2 antibody was raised against kLH-conjugated synthetic peptide from internal region of human CCNL2.
Specificity:	Human Cyclin L2 / CCNL2
Epitope:	aa345-374
Reactivity:	Human
Purification:	Immunoaffinity purified
Presentation:	PBS, 0.09% sodium azide
Recommended Storage:	Maintain refrigerated at 2-8°C for up to 6 months. For long term storage store at -20°C.
Uses:	IHC - Paraffin (1:75), Western blot (1:1000) (Optimal dilution to be determined by the researcher)
Size:	200 µl

Immunohistochemistry Image:



Human Colon: Formalin-Fixed, Paraffin-Embedded (FFPE)

Western Blot Image:



CCNL2 Antibody (Center) Western blot of NCI-H460 cell line lysates (35 ug/lane). This demonstrates the CCNL2 antibody detected the CCNL2 protein (arrow).

Requested From:	Japan
Laboratory Reagent For In Vitro Research Use Only	
Not for resale without prior written consent from LifeSpan BioSciences, Inc.	
Created on 9/23/2014	
© 2014 LifeSpan BioSciences	