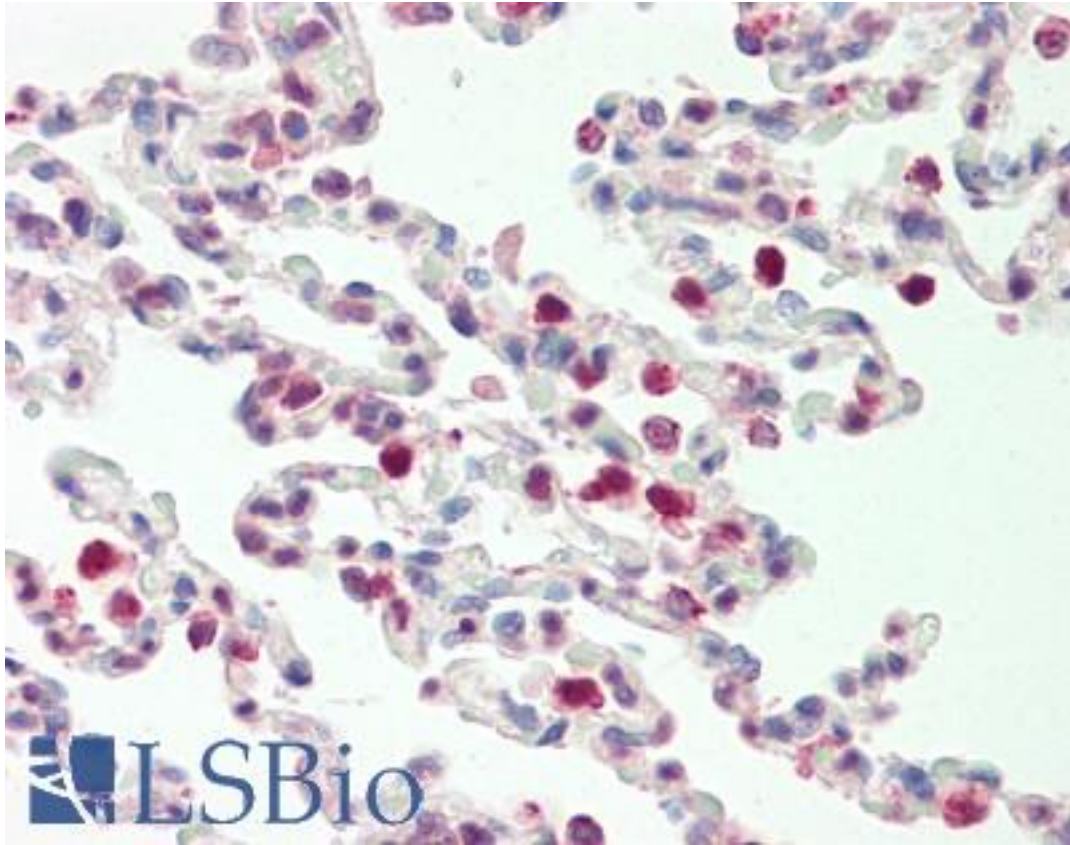


CKAP4 Rabbit anti-Human Polyclonal (aa581-602) Antibody - LS-B10675 - LSBio

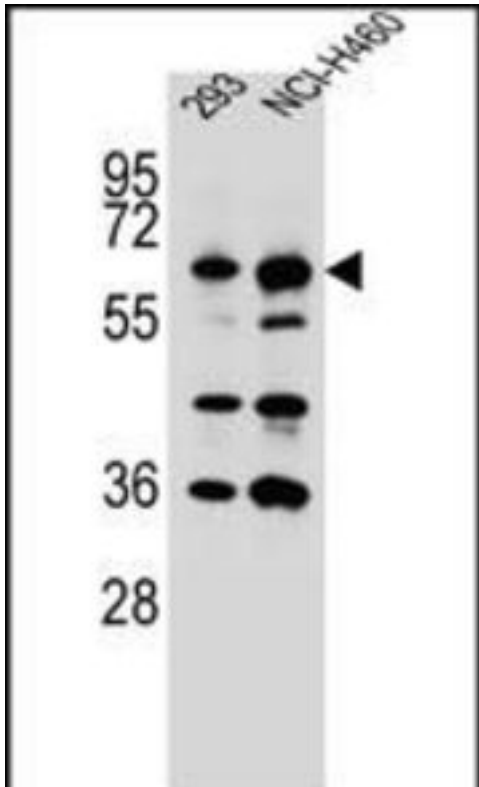
CatalogID:	LS-B10675
Validation:	This antibody replaces catalog number LS-C168796. It has been validated for use in the following assays: IHC-P.
Target:	cytoskeleton-associated protein 4 (CKAP4)
Synonyms:	CKAP4 Antibody, 63 kDa membrane protein Antibody, ERGIC-63 Antibody, CLIMP-63 Antibody, p63 Antibody
Host	CKAP4 antibody was produced in Rabbit
Clonality:	Polyclonal
Immunogen Species:	CKAP4 antibody was raised against Human
Antigen Type:	Synthetic peptide
Immunogen:	CKAP4 antibody was raised against kLH-conjugated synthetic peptide from C-terminal region of human CKAP4.
Specificity:	Human CKAP4
Epitope:	aa581-602
Reactivity:	Human
Purification:	Immunoaffinity purified
Presentation:	PBS, 0.09% sodium azide
Recommended Storage:	Maintain refrigerated at 2-8°C for up to 6 months. For long term storage store at -20°C.
Uses:	IHC - Paraffin (1:75), Western blot (1:1000) (Optimal dilution to be determined by the researcher)
Size:	200 µl

Immunohistochemistry Image:



Human Lung: Formalin-Fixed, Paraffin-Embedded (FFPE)

Western Blot Image:



CKAP4 Antibody (C-term) Western blot of 293 and NCI-H460 cell line lysates (35 ug/lane). This demonstrates the CKAP4 antibody detected the CKAP4 protein (arrow).

Requested From:

Japan

Laboratory Reagent For In Vitro Research Use Only

Not for resale without prior written consent from LifeSpan BioSciences, Inc.

Created on 9/23/2014

© 2014 LifeSpan BioSciences