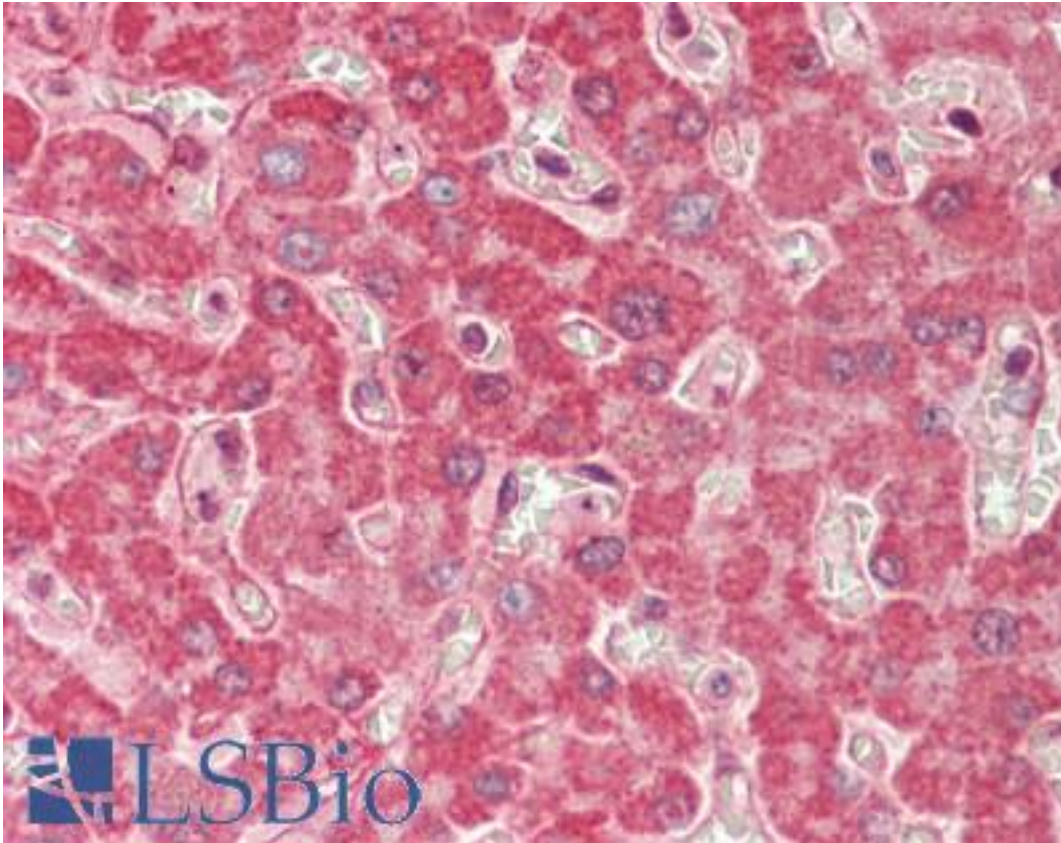


SPRED1 Rabbit anti-Human Polyclonal Antibody - LS-B10673 - LSBio

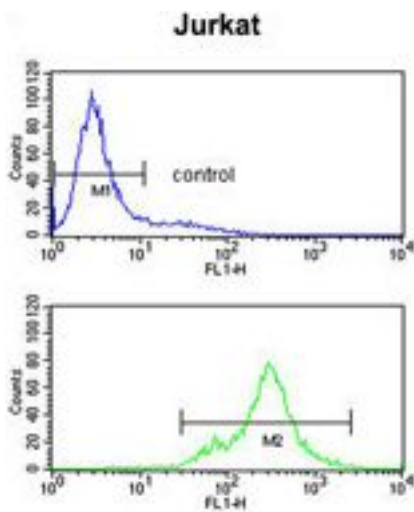
CatalogID:	LS-B10673
Validation:	This antibody replaces catalog number LS-C161470. It has been validated for use in the following assays: IHC-P.
Target:	sprouty-related, EVH1 domain containing 1 (SPRED1)
Synonyms:	SPRED1 Antibody, HSpred1 Antibody, NFLS Antibody, Spred-1 Antibody
Host	SPRED1 antibody was produced in Rabbit
Clonality:	Polyclonal
Immunogen Species:	SPRED1 antibody was raised against Human
Antigen Type:	Recombinant protein
Immunogen:	SPRED1 antibody was raised against human SPRED1 recombinant protein.
Specificity:	Human SPRED1
Reactivity:	Human
Purification:	Immunoaffinity purified
Presentation:	PBS, 0.09% sodium azide
Recommended Storage:	Maintain refrigerated at 2-8°C for up to 6 months. For long term storage store at -20°C.
Uses:	IHC - Paraffin (1:75), Western blot (1:1000), Flow Cytometry (1:10 - 1:50) (Optimal dilution to be determined by the researcher)
Size:	200 µl

Immunohistochemistry Image:



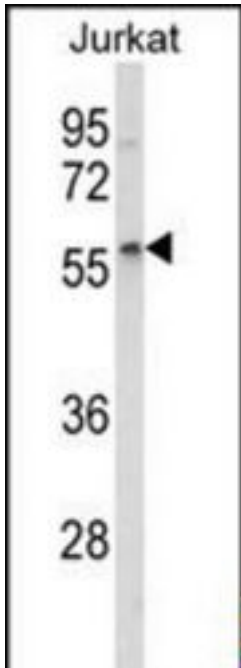
Human Liver: Formalin-Fixed, Paraffin-Embedded (FFPE)

Flow Cytometry Image:



SPRED1 Antibody flow cytometry analysis of Jurkat cells (bottom histogram) compared to a negative control cell (top histogram). FITC-conjugated goat-anti-rabbit secondary antibodies were used for the analysis.

Western Blot Image:



Western blot of SPRED1 Antibody in Jurkat cell line lysates (35 ug/lane). SPRED1 (arrow) was detected using the purified Pab.

Requested From:

Japan

Laboratory Reagent For In Vitro Research Use Only

Not for resale without prior written consent from LifeSpan BioSciences, Inc.

Created on 9/23/2014

© 2014 LifeSpan BioSciences