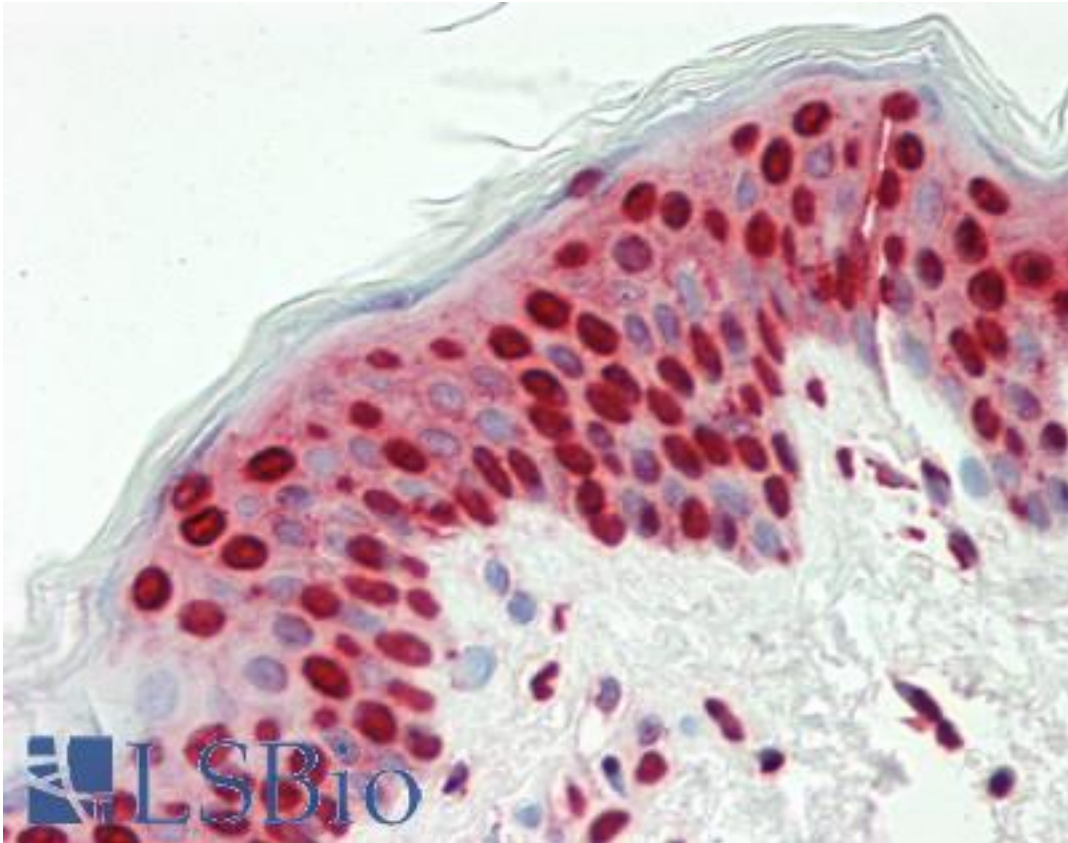


CCND2 / Cyclin D2 Rabbit anti-Human Polyclonal (aa1-30) Antibody - LS-B10672 - LSBio

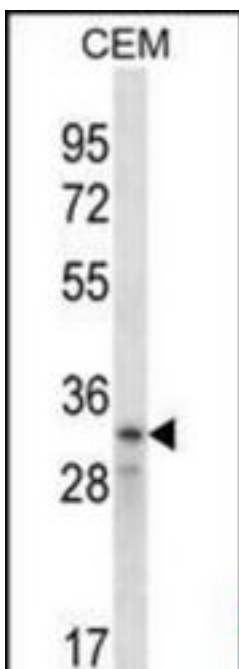
CatalogID:	LS-B10672
Validation:	This antibody replaces catalog number LS-C168469. It has been validated for use in the following assays: IHC-P.
Target:	cyclin D2 (CCND2)
Synonyms:	CCND2 Antibody, KIAK0002 Antibody, G1/S-specific cyclin D2 Antibody, G1/S-specific cyclin-D2 Antibody, Cyclin D2 Antibody
Host	CCND2 antibody was produced in Rabbit
Clonality:	Polyclonal
Immunogen Species:	CCND2 / Cyclin D2 antibody was raised against Human
Antigen Type:	Synthetic peptide
Immunogen:	CCND2 / Cyclin D2 antibody was raised against kLH-conjugated synthetic peptide from N-terminal region of human CCND2.
Specificity:	Human Cyclin D2
Epitope:	aa1-30
Reactivity:	Human
Purification:	Immunoaffinity purified
Presentation:	PBS, 0.09% sodium azide
Recommended Storage:	Maintain refrigerated at 2-8°C for up to 6 months. For long term storage store at -20°C.
Uses:	IHC - Paraffin (1:50), Western blot (1:1000) (Optimal dilution to be determined by the researcher)
Size:	200 µl

Immunohistochemistry Image:



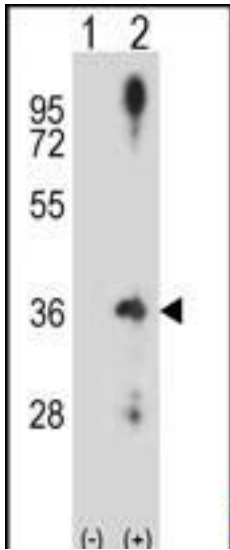
Human Skin: Formalin-Fixed, Paraffin-Embedded (FFPE)

Western Blot Image:



CCND2 Antibody (N-term) Western blot of CEM cell line lysates (35 ug/lane). This demonstrates the CCND2 antibody detected the CCND2 protein (arrow).

Western Blot Image:



Western blot of CCND2 (arrow) using rabbit polyclonal CCND2 Antibody (N-term). 293 cell lysates (2 ug/lane) either nontransfected (Lane 1) or transiently transfected (Lane 2) with the CCND2 gene.

Requested From:

Japan

Laboratory Reagent For In Vitro Research Use Only

Not for resale without prior written consent from LifeSpan BioSciences, Inc.

Created on 9/23/2014

© 2014 LifeSpan BioSciences