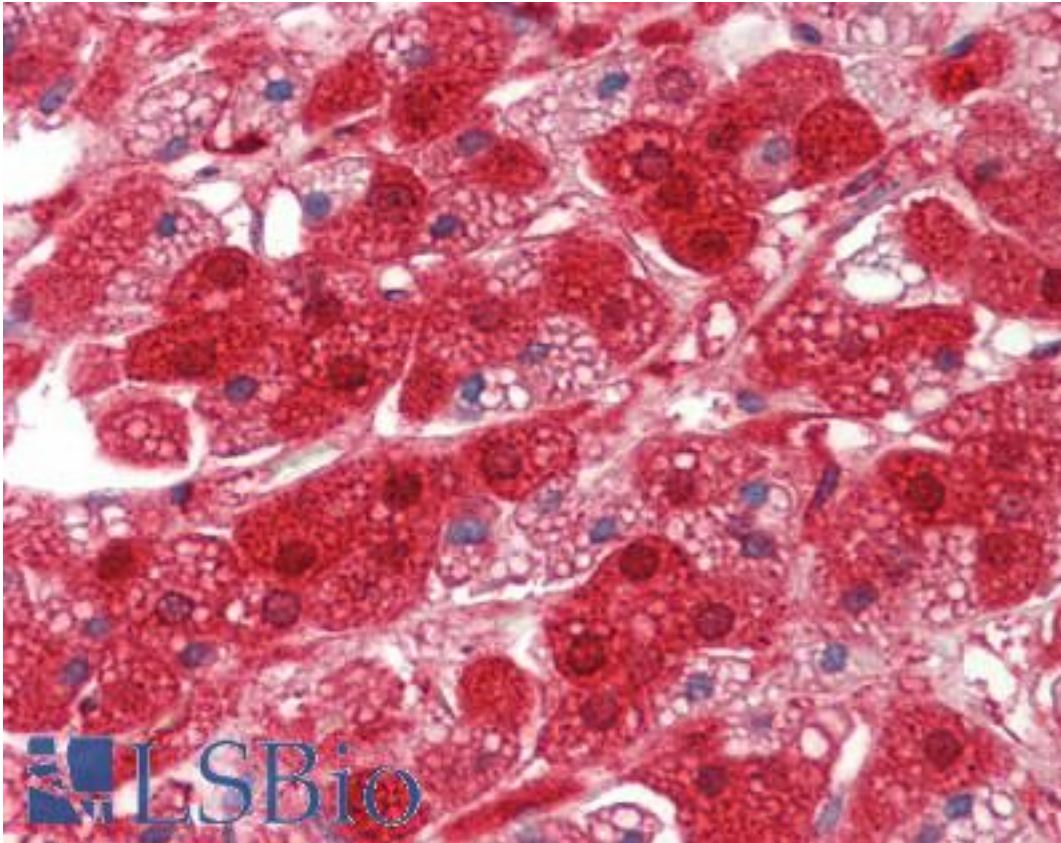


RDX / Radixin Rabbit anti-Human Polyclonal (aa465-495) Antibody - LS-B10668 - LSBio

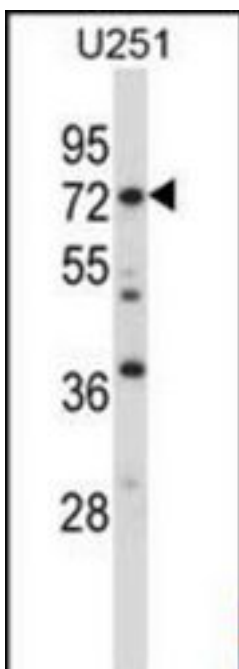
CatalogID:	LS-B10668
Validation:	This antibody replaces catalog number LS-C162526. It has been validated for use in the following assays: IHC-P.
Target:	radixin (RDX)
Synonyms:	RDX Antibody, Radixin Antibody, DFNB24 Antibody
Host	RDX antibody was produced in Rabbit
Clonality:	Polyclonal
Immunogen Species:	RDX / Radixin antibody was raised against Human
Antigen Type:	Synthetic peptide
Immunogen:	RDX / Radixin antibody was raised against kLH-conjugated synthetic peptide from C-terminal region of human RDX.
Specificity:	Human RDX / Radixin
Epitope:	aa465-495
Reactivity:	Human
Purification:	Immunoaffinity purified
Presentation:	PBS, 0.09% sodium azide
Recommended Storage:	Maintain refrigerated at 2-8°C for up to 6 months. For long term storage store at -20°C.
Uses:	IHC - Paraffin (1:75), Western blot (1:1000) (Optimal dilution to be determined by the researcher)
Size:	200 µl

Immunohistochemistry Image:



Human Adrenal: Formalin-Fixed, Paraffin-Embedded (FFPE)

Western Blot Image:



RDX Antibody (C-term) Western blot of U251 cell line lysates (35 ug/lane). This demonstrates the RDX antibody detected the RDX protein (arrow).

Requested From:	Japan
Laboratory Reagent For In Vitro Research Use Only	
Not for resale without prior written consent from LifeSpan BioSciences, Inc.	
Created on 9/23/2014	
© 2014 LifeSpan BioSciences	