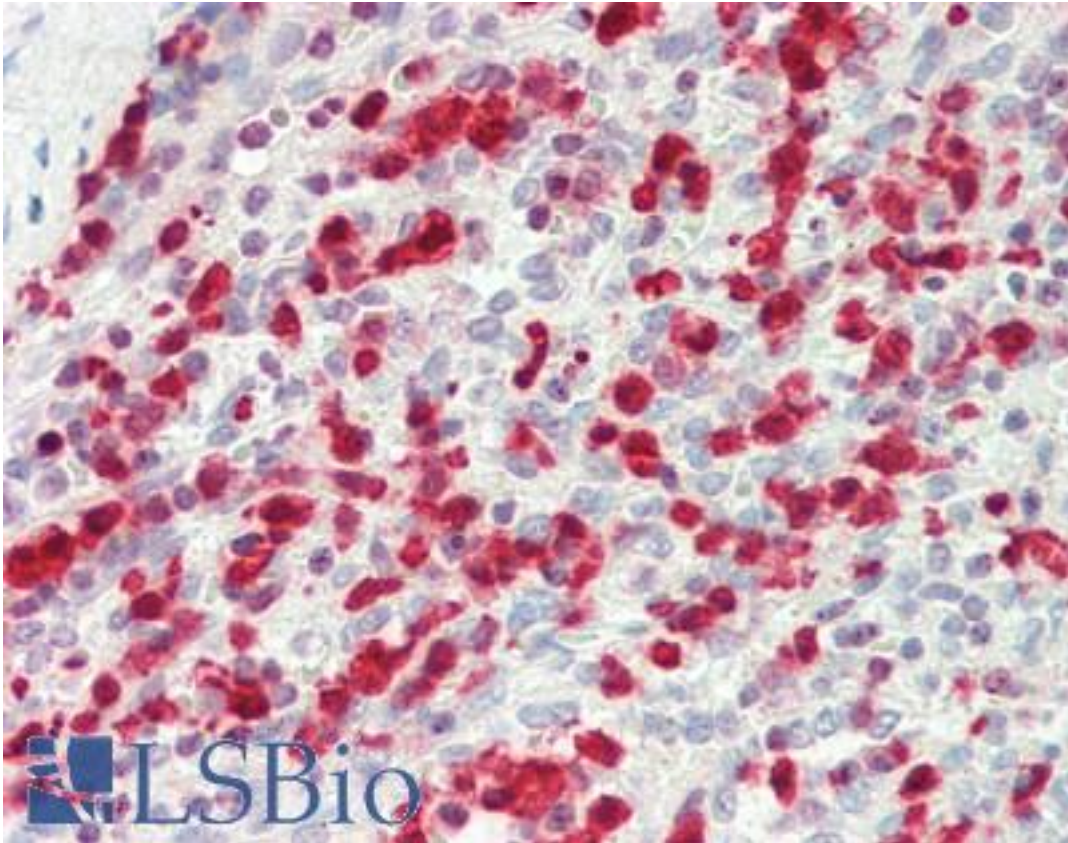


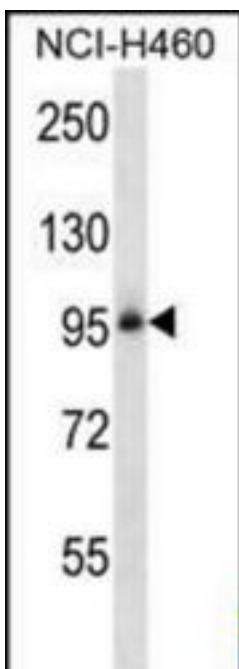
ITGB5 / Integrin Beta 5 Rabbit anti-Human Polyclonal (aa215-244) Antibody - LS-B10667 - LSBio	
CatalogID:	LS-B10667
Validation:	This antibody replaces catalog number LS-C165327. It has been validated for use in the following assays: IHC-P.
Target:	integrin, beta 5 (ITGB5)
Synonyms:	ITGB5 Antibody, Integrin Beta 5 Antibody, Integrin beta-5 Antibody, Integrin beta-5 subunit Antibody, Integrin, beta 5 Antibody
Family / Subfamily:	Integrin / not assigned-Integrin
Host	ITGB5 antibody was produced in Rabbit
Clonality:	Polyclonal
Immunogen Species:	ITGB5 / Integrin Beta 5 antibody was raised against Human
Antigen Type:	Synthetic peptide
Immunogen:	ITGB5 / Integrin Beta 5 antibody was raised against kLH-conjugated synthetic peptide from N-terminal region of human ITGB5.
Specificity:	Human ITGB5 / Integrin Beta 5
Epitope:	aa215-244
Reactivity:	Human
Purification:	Immunoaffinity purified
Presentation:	PBS, 0.09% sodium azide
Recommended Storage:	Maintain refrigerated at 2-8°C for up to 6 months. For long term storage store at -20°C.
Uses:	IHC - Paraffin (1:10 - 1:75), Western blot (1:1000) (Optimal dilution to be determined by the researcher)
Size:	200 µl

Immunohistochemistry Image:



Human Spleen: Formalin-Fixed, Paraffin-Embedded (FFPE)

Western Blot Image:



ITGB5 Antibody (N-term) Western blot of NCI-H460 cell line lysates (35 ug/lane). This demonstrates the ITGB5 antibody detected the ITGB5 protein (arrow).

Requested From:	Japan
Laboratory Reagent For In Vitro Research Use Only	
Not for resale without prior written consent from LifeSpan BioSciences, Inc.	
Created on 9/23/2014	
© 2014 LifeSpan BioSciences	