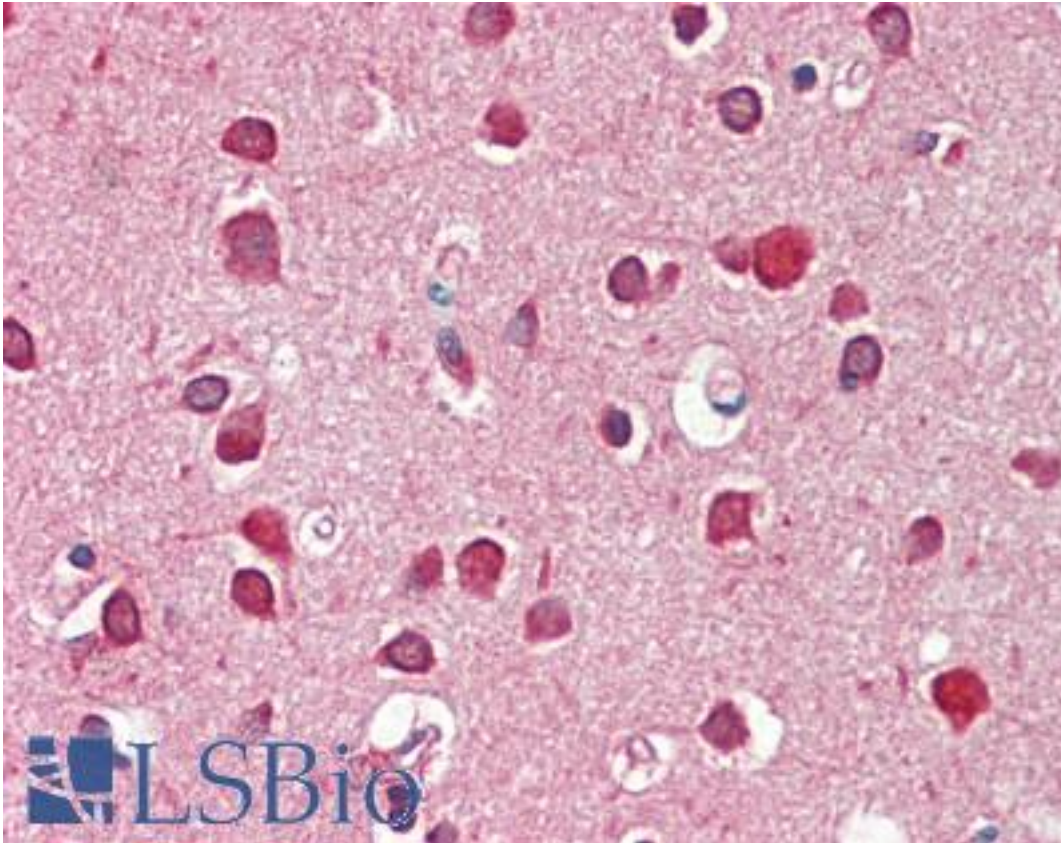


GBX2 Mouse anti-Human Monoclonal Antibody - LS-B10661 - LSBio

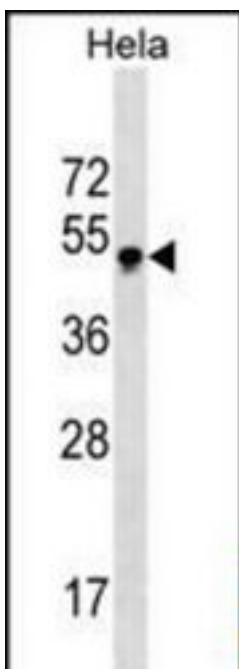
CatalogID:	LS-B10661
Validation:	This antibody replaces catalog number LS-C166401. It has been validated for use in the following assays: IHC-P.
Target:	gastrulation brain homeobox 2 (GBX2)
Synonyms:	GBX2 Antibody, Gastrulation brain homeo box 2 Antibody, Gastrulation brain homeobox 2 Antibody, Homeobox protein GBX-2 Antibody
Host	GBX2 antibody was produced in Mouse
Clonality:	Monoclonal
Isotype:	IgM
Immunogen Species:	GBX2 antibody was raised against Human
Antigen Type:	Synthetic peptide
Immunogen:	GBX2 antibody was raised against kLH-conjugated synthetic peptide selected from internal region of human GBX2.
Specificity:	Human GBX2
Reactivity:	Human
Purification:	Euglobulin precipitation
Presentation:	PBS, 0.09% sodium azide
Recommended Storage:	Maintain refrigerated at 2-8°C for up to 6 months. For long term storage store at -20°C.
Uses:	IHC - Paraffin (1:100), Western blot (1:100 - 1:500) (Optimal dilution to be determined by the researcher)
Size:	200 µl

Immunohistochemistry Image:



Human Brain, Cortex: Formalin-Fixed, Paraffin-Embedded (FFPE)

Western Blot Image:



GBX2 Antibody (Center) Western blot of HeLa cell line lysates (35 ug/lane). This demonstrates the GBX2 antibody detected the GBX2 protein (arrow).

Requested From:	Japan
Laboratory Reagent For In Vitro Research Use Only	
Not for resale without prior written consent from LifeSpan BioSciences, Inc.	
Created on 9/23/2014	
© 2014 LifeSpan BioSciences	