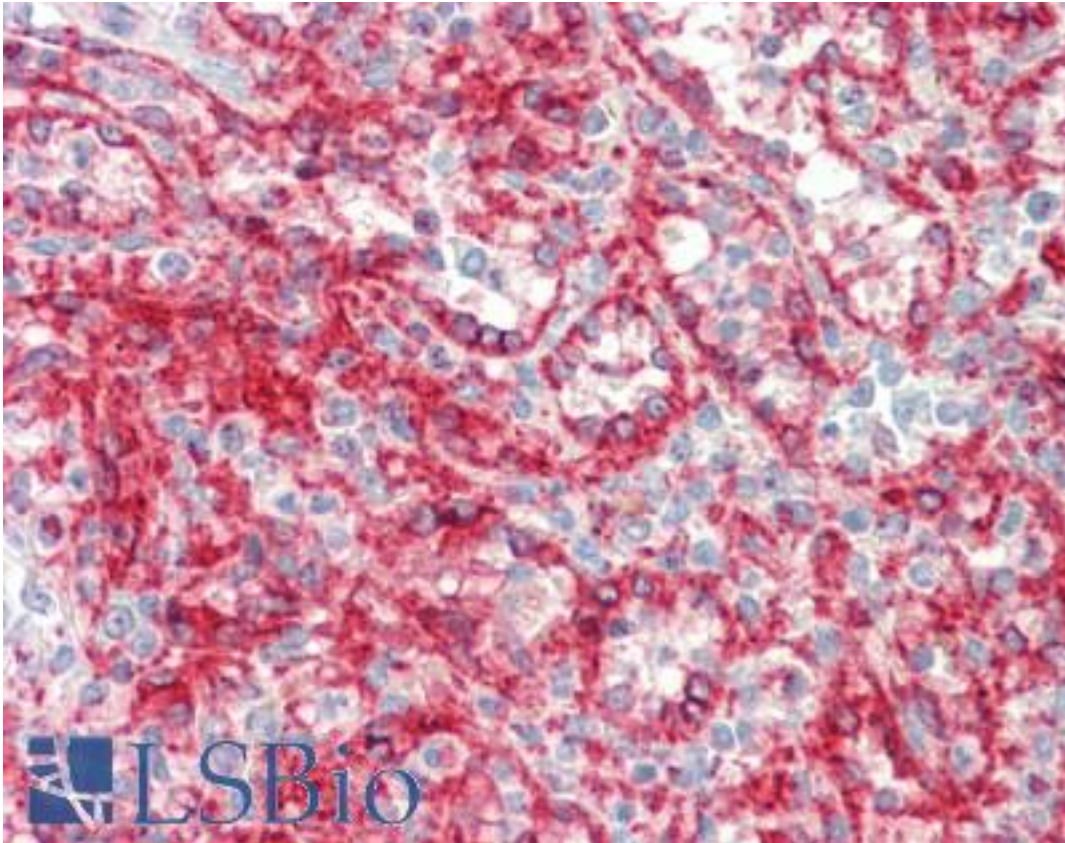


HLA-A Mouse anti-Human Monoclonal Antibody - LS-B10658 - LSBio

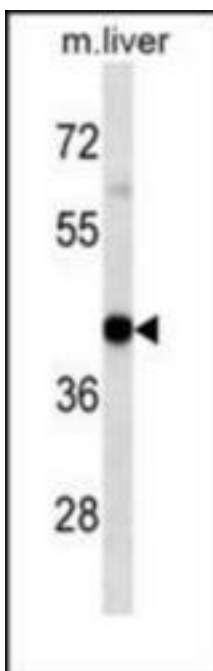
CatalogID:	LS-B10658
Validation:	This antibody replaces catalog number LS-C164910. It has been validated for use in the following assays: IHC-P.
Target:	major histocompatibility complex, class I, A (HLA-A)
Synonyms:	HLA-A Antibody, Antigen presenting molecule Antibody, Leukocyte antigen class I-A Antibody, HLAA Antibody
Host	HLA-A antibody was produced in Mouse
Clonality:	Monoclonal
Isotype:	IgG1
Immunogen Species:	HLA-A antibody was raised against Human
Antigen Type:	Synthetic peptide
Immunogen:	HLA-A antibody was raised against kLH-conjugated synthetic peptide selected from internal region of human HLA-A.
Specificity:	Human HLA-A
Reactivity:	Human, Mouse
Purification:	Protein G purified
Presentation:	PBS, 0.09% sodium azide
Recommended Storage:	Maintain refrigerated at 2-8°C for up to 6 months. For long term storage store at -20°C.
Uses:	IHC - Paraffin (1:50), Western blot (1:100 - 1:250) (Optimal dilution to be determined by the researcher)
Size:	200 µl

Immunohistochemistry Image:



Human Spleen: Formalin-Fixed, Paraffin-Embedded (FFPE)

Western Blot Image:



HLA-A Antibody Western blot of mouse Liver tissue lysates (35 ug/lane). This demonstrates the HLA-A antibody detected the HLA-A protein (arrow).

Requested From:	Japan
Laboratory Reagent For In Vitro Research Use Only	
Not for resale without prior written consent from LifeSpan BioSciences, Inc.	
Created on 9/23/2014	
© 2014 LifeSpan BioSciences	