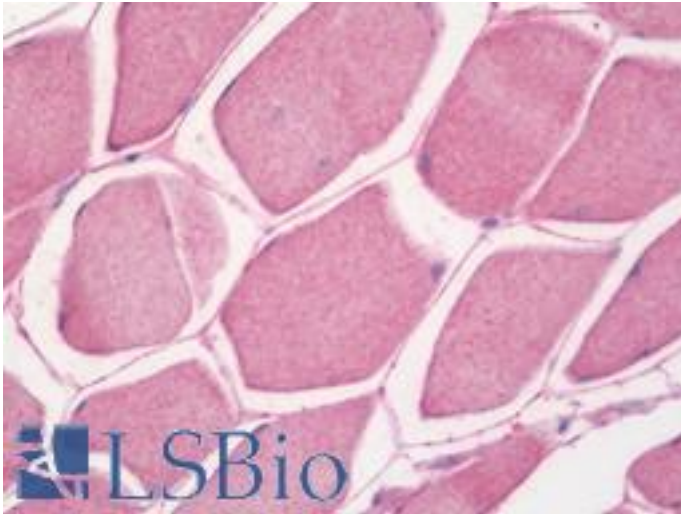


NDUFA1 Rabbit anti-Human Polyclonal Antibody - LS-B10654 - LSBio

CatalogID:	LS-B10654
Validation:	This antibody replaces catalog number LS-C210896. It has been validated for use in the following assays: IHC-P.
Target:	NADH dehydrogenase (ubiquinone) 1 alpha subcomplex, 1, 7.5kDa (NDUFA1)
Synonyms:	NDUFA1 Antibody, CI-MWFE Antibody, Complex I MWFE subunit Antibody, MWFE Antibody, NADH dehydrogenase Antibody, Type I dehydrogenase Antibody, ZNF183 Antibody, Complex I-MWFE Antibody
Host	NDUFA1 antibody was produced in Rabbit
Clonality:	Polyclonal
Isotype:	IgG
Immunogen Species:	NDUFA1 antibody was raised against Human
Antigen Type:	Recombinant protein
Immunogen:	NDUFA1 antibody was raised against recombinant human NADH dehydrogenase [ubiquinone] 1 alpha subcomplex subunit 1 protein.
Specificity:	Human NDUFA1
Reactivity:	Human
Purification:	Caprylic acid and ammonium sulfate precipitation
Presentation:	PBS, pH 7.4, 0.03% Proclin 300, 50% glycerol.
Recommended Storage:	Aliquot and store at -20°C or -80°C. Avoid freeze-thaw cycles.
Uses:	IHC - Paraffin (10 µg/ml), ELISA (Optimal dilution to be determined by the researcher)
Size:	50 µg

Immunohistochemistry Image:



Human Skeletal Muscle: Formalin-Fixed, Paraffin-Embedded (FFPE)

Requested From:

Japan

Laboratory Reagent For In Vitro Research Use Only

Not for resale without prior written consent from LifeSpan BioSciences, Inc.

Created on 9/23/2014

© 2014 LifeSpan BioSciences