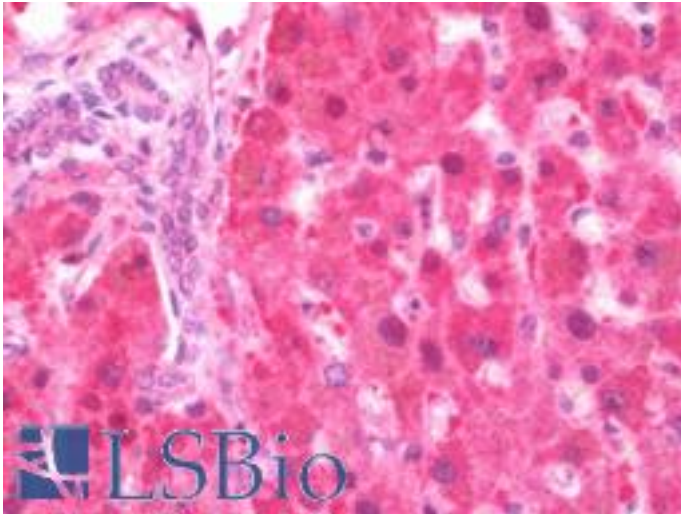


GDI2 Rabbit anti-Human Polyclonal Antibody - LS-B10650 - LSBio

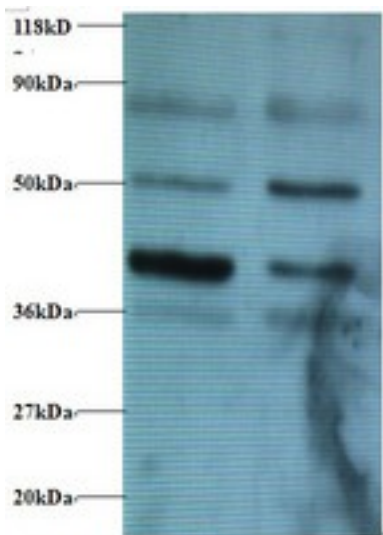
CatalogID:	LS-B10650
Validation:	This antibody replaces catalog number LS-C211032. It has been validated for use in the following assays: IHC-P.
Target:	GDP dissociation inhibitor 2 (GDI2)
Synonyms:	GDI2 Antibody, GDP dissociation inhibitor 2 Antibody, GDI-2 Antibody, Rab GDI beta Antibody, RABGDIB Antibody
Host	GDI2 antibody was produced in Rabbit
Clonality:	Polyclonal
Isotype:	IgG
Immunogen Species:	GDI2 antibody was raised against Human
Antigen Type:	Recombinant protein
Immunogen:	GDI2 antibody was raised against recombinant human Rab GDP dissociation inhibitor beta protein.
Specificity:	Human GDI2
Reactivity:	Human
Purification:	Caprylic acid and ammonium sulfate precipitation
Presentation:	PBS, pH 7.4, 0.03% Proclin 300, 50% glycerol.
Recommended Storage:	Aliquot and store at -20°C or -80°C. Avoid freeze-thaw cycles.
Uses:	IHC - Paraffin (10 µg/ml), Western blot, ELISA (Optimal dilution to be determined by the researcher)
Size:	50 µg

Immunohistochemistry Image:



Human Liver: Formalin-Fixed, Paraffin-Embedded (FFPE)

Western Blot Image:



All lanes : Rab GDP dissociation inhibitor beta Antibody at 2 µg/ml

Lane 1 : 293T whole cell lysate. Lane 2 : EC109 whole cell lysate. Secondary: Goat polyclonal to Rabbit IgG at 1/15000 dilution.

Requested From:

Japan

Laboratory Reagent For In Vitro Research Use Only

Not for resale without prior written consent from LifeSpan BioSciences, Inc.

Created on 9/23/2014

© 2014 LifeSpan BioSciences