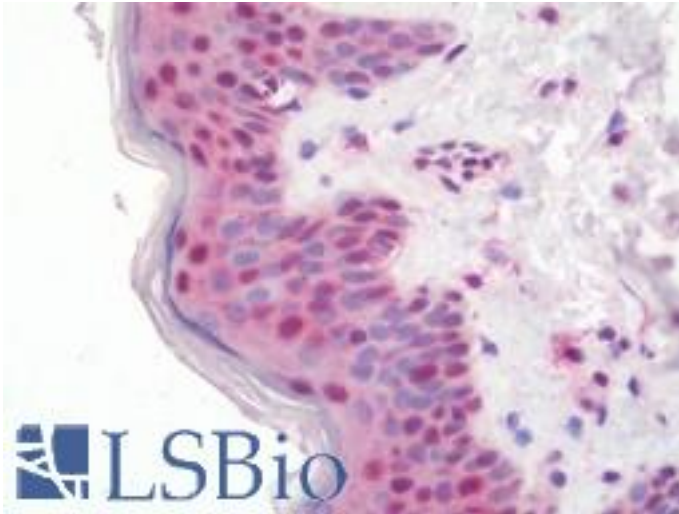


ZMAT2 Rabbit anti-Human Polyclonal Antibody - LS-B10639 - LSBio

CatalogID:	LS-B10639
Validation:	This antibody replaces catalog number LS-C211372. It has been validated for use in the following assays: IHC-P.
Target:	zinc finger, matrin-type 2 (ZMAT2)
Synonyms:	ZMAT2 Antibody, HSNU23 Antibody, Snu23 Antibody, Zinc finger, matrin type 2 Antibody, Ptg-12 Antibody, Zinc finger, matrin-type 2 Antibody
Host	ZMAT2 antibody was produced in Rabbit
Clonality:	Polyclonal
Isotype:	IgG
Immunogen Species:	ZMAT2 antibody was raised against Human
Antigen Type:	Recombinant protein
Immunogen:	ZMAT2 antibody was raised against recombinant human Zinc finger matrin-type protein 2 protein.
Specificity:	Human ZMAT2
Reactivity:	Human
Purification:	Caprylic acid and ammonium sulfate precipitation
Presentation:	PBS, pH 7.4, 0.03% Proclin 300, 50% glycerol.
Recommended Storage:	Aliquot and store at -20°C or -80°C. Avoid freeze-thaw cycles.
Uses:	IHC - Paraffin (10 µg/ml), Western blot, ELISA (Optimal dilution to be determined by the researcher)
Size:	50 µg

Immunohistochemistry Image:



Human Skin: Formalin-Fixed, Paraffin-Embedded (FFPE)

Requested From:

Japan

Laboratory Reagent For In Vitro Research Use Only

Not for resale without prior written consent from LifeSpan BioSciences, Inc.

Created on 9/23/2014

© 2014 LifeSpan BioSciences