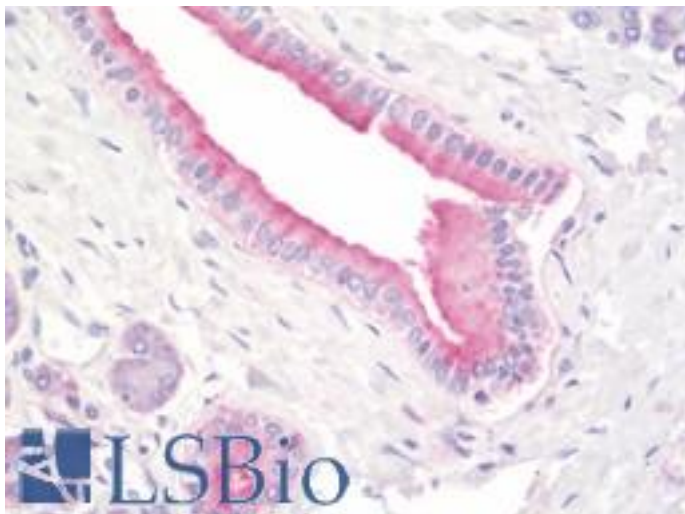


**PFDN5 / MM1 Rabbit anti-Human Polyclonal Antibody - LS-B10629 - LSBio**

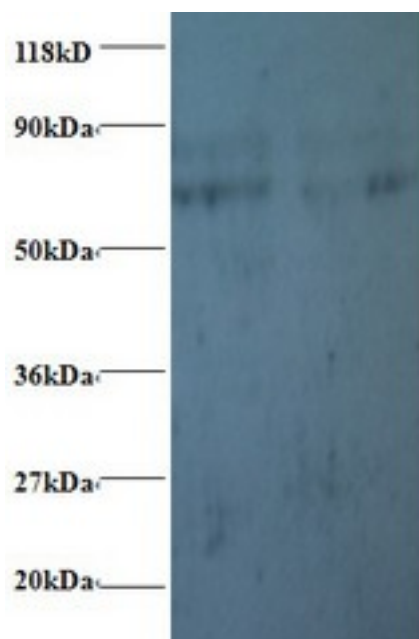
<b>CatalogID:</b>	LS-B10629
<b>Validation:</b>	This antibody replaces catalog number LS-C210856. It has been validated for use in the following assays: IHC-P.
<b>Target:</b>	prefoldin subunit 5 (PFDN5)
<b>Synonyms:</b>	PFDN5 Antibody, C-Myc-binding protein Mm-1 Antibody, C-myc binding protein Antibody, MM-1 Antibody, Myc modulator 1 Antibody, Myc modulator-1 Antibody, Prefoldin 5 Antibody, MM1 Antibody, PFD5 Antibody, Prefoldin subunit 5 Antibody
<b>Host</b>	PFDN5 antibody was produced in Rabbit
<b>Clonality:</b>	Polyclonal
<b>Isotype:</b>	IgG
<b>Immunogen Species:</b>	PFDN5 / MM1 antibody was raised against Human
<b>Antigen Type:</b>	Recombinant protein
<b>Immunogen:</b>	PFDN5 / MM1 antibody was raised against recombinant human Prefoldin subunit 5 protein.
<b>Specificity:</b>	Human PFDN5 / MM1
<b>Reactivity:</b>	Human
<b>Purification:</b>	Caprylic acid and ammonium sulfate precipitation
<b>Presentation:</b>	PBS, pH 7.4, 0.03% Proclin 300, 50% glycerol.
<b>Recommended Storage:</b>	Aliquot and store at -20°C or -80°C. Avoid freeze-thaw cycles.
<b>Uses:</b>	IHC - Paraffin (10 µg/ml), Western blot, ELISA (Optimal dilution to be determined by the researcher)
<b>Size:</b>	50 µg

**Immunohistochemistry Image:**



Human Pancreas: Formalin-Fixed, Paraffin-Embedded (FFPE)

**Western Blot Image:**



Western blot of Prefoldin subunit 5 antibody at 2 ug/ml. Lane 1: EC109 whole cell lysate. Lane 2: 293T whole cell lysate. Secondary: Goat polyclonal to Rabbit IgG at 1:15000 dilution. Predicted band size: 17 kDa. Observed band size: 70 kDa. Additional bands at: 80 kDa. We are unsure as to the identity of these extra bands.

**Requested From:**

Japan

Laboratory Reagent For In Vitro Research Use Only

Not for resale without prior written consent from LifeSpan BioSciences, Inc.

Created on 9/23/2014

© 2014 LifeSpan BioSciences