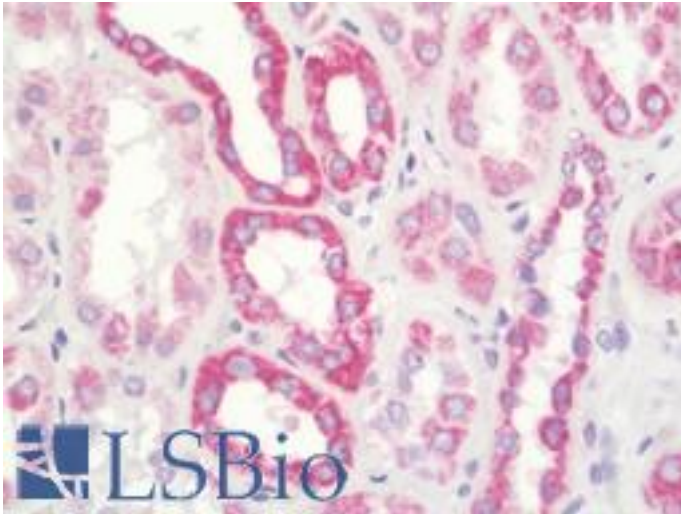


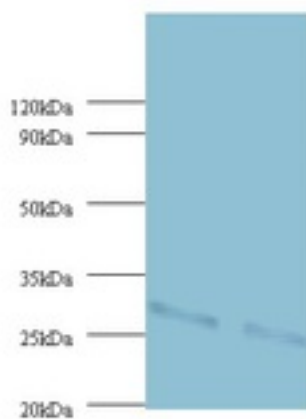
UQCRFS1 Rabbit anti-Human Polyclonal Antibody - LS-B10626 - LSBio	
CatalogID:	LS-B10626
Validation:	This antibody replaces catalog number LS-C210781. It has been validated for use in the following assays: IHC-P.
Target:	ubiquinol-cytochrome c reductase, Rieske iron-sulfur polypeptide 1 (UQCRFS1)
Synonyms:	UQCRFS1 Antibody, Complex III subunit 5 Antibody, Rieske iron-sulfur protein Antibody, RIP1 Antibody, RISP Antibody, UQCR5 Antibody, RIS1 Antibody
Host	UQCRFS1 antibody was produced in Rabbit
Clonality:	Polyclonal
Isotype:	IgG
Immunogen Species:	UQCRFS1 antibody was raised against Human
Antigen Type:	Recombinant protein
Immunogen:	UQCRFS1 antibody was raised against recombinant human Cytochrome b-c1 complex subunit Rieske, mitochondrial protein.
Specificity:	Human UQCRFS1
Reactivity:	Human
Purification:	Caprylic acid and ammonium sulfate precipitation
Presentation:	PBS, pH 7.4, 0.03% Proclin 300, 50% glycerol.
Recommended Storage:	Aliquot and store at -20°C or -80°C. Avoid freeze-thaw cycles.
Uses:	IHC - Paraffin (10 µg/ml), Western blot, ELISA (Optimal dilution to be determined by the researcher)
Size:	50 µg

Immunohistochemistry Image:



Human Kidney: Formalin-Fixed, Paraffin-Embedded (FFPE)

Western Blot Image:



Western Blot: UQCRFS1 antibody at 2 μ g/ml. Lane 1 : EC109 whole cell lysate. Lane 2 : 293T whole cell lysate.

Requested From:

Japan

Laboratory Reagent For In Vitro Research Use Only

Not for resale without prior written consent from LifeSpan BioSciences, Inc.

Created on 9/23/2014

© 2014 LifeSpan BioSciences