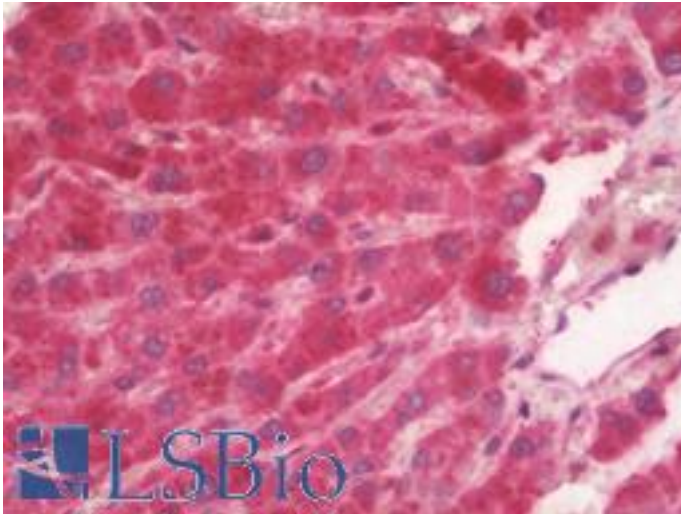


COXG / COX6B1 Rabbit anti-Human Polyclonal Antibody - LS-B10625 - LSBio	
CatalogID:	LS-B10625
Validation:	This antibody replaces catalog number LS-C210774. It has been validated for use in the following assays: IHC-P.
Target:	cytochrome c oxidase subunit VIb polypeptide 1 (ubiquitous) (COX6B1)
Synonyms:	COX6B1 Antibody, COX6B Antibody, COXVIb1 Antibody, COX VIb-1 Antibody, COXG Antibody
Host	COX6B1 antibody was produced in Rabbit
Clonality:	Polyclonal
Isotype:	IgG
Immunogen Species:	COXG / COX6B1 antibody was raised against Human
Antigen Type:	Recombinant protein
Immunogen:	COXG / COX6B1 antibody was raised against recombinant human Cytochrome c oxidase subunit 6B1 protein.
Specificity:	Human COXG / COX6B1
Reactivity:	Human, Mouse, Rat, Bovine
Purification:	Caprylic acid and ammonium sulfate precipitation
Presentation:	PBS.
Recommended Storage:	Aliquot and store at -20°C or -80°C. Avoid freeze-thaw cycles.
Uses:	IHC - Paraffin (5 µg/ml), Western blot, ELISA (Optimal dilution to be determined by the researcher)
Size:	50 µg

Immunohistochemistry Image:



Human Liver: Formalin-Fixed, Paraffin-Embedded (FFPE)

Requested From:

Japan

Laboratory Reagent For In Vitro Research Use Only

Not for resale without prior written consent from LifeSpan BioSciences, Inc.

Created on 9/23/2014

© 2014 LifeSpan BioSciences