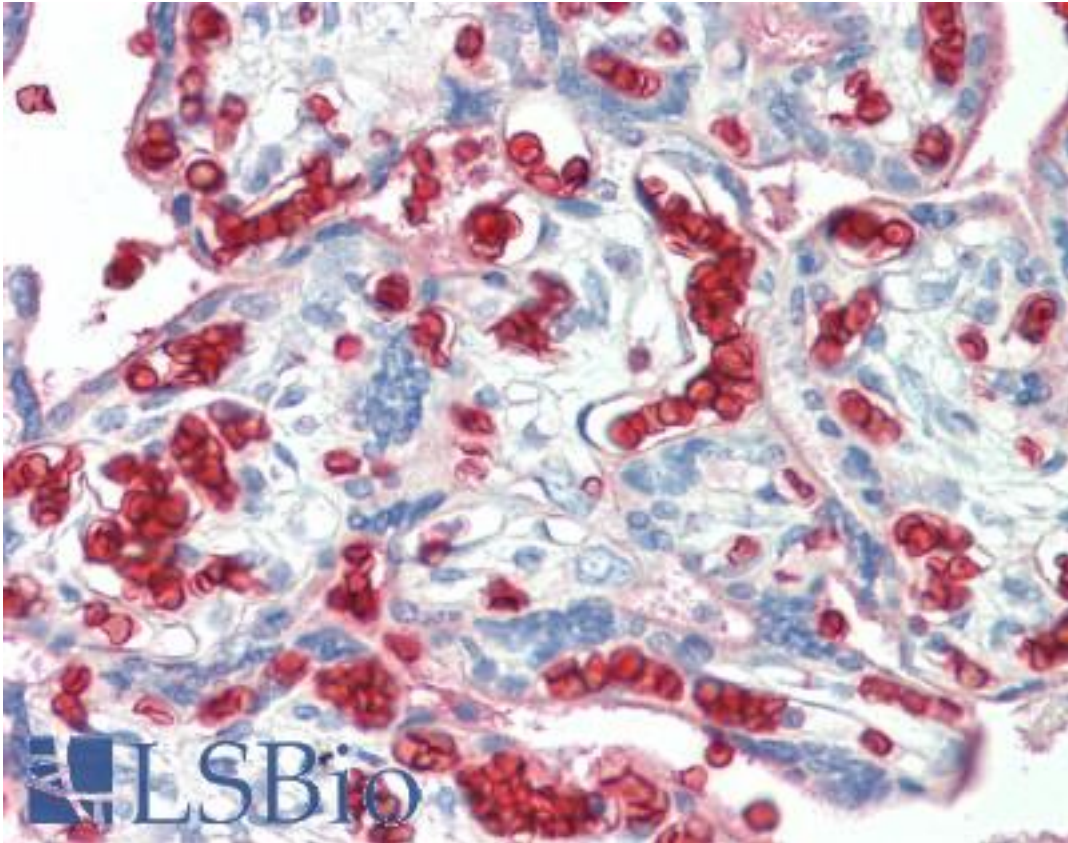


Erythrocytes Rabbit anti-Human Polyclonal Antibody - LS-B10620 - LSBio

CatalogID:	LS-B10620
Validation:	This antibody replaces catalog number LS-C209699. It has been validated for use in the following assays: IHC-P.
Target:	Erythrocytes
Host	Erythrocytes antibody was produced in Rabbit
Clonality:	Polyclonal
Immunogen Species:	Erythrocytes antibody was raised against Human
Antigen Type:	Cells
Immunogen:	Erythrocytes antibody was raised against human washed pooled Red Blood Cells (RBC).
Reactivity:	Human
Purification:	Ion exchange chromatography
Reconstitution:	Deionized Water. Possible additional volumes for resuspension: 50 µl
Presentation:	0.02 M potassium phosphate, 0.15 M sodium chloride, 0.01% sodium azide, pH 7.2.
Recommended Storage:	Short term 4°C, long term aliquot and store at -20°C, avoid freeze thaw cycles. Centrifuge product before removing cap. Only dilute immediately prior to use.
Uses:	IHC - Paraffin (2.5 µg/ml), Hemagglutination (1:32 - 1:64) (Optimal dilution to be determined by the researcher)
Size:	50 µl
Concentration:	10 mg/ml (after resuspension)

Immunohistochemistry Image:



Human Placenta: Formalin-Fixed, Paraffin-Embedded (FFPE)

Requested From:

Japan

Laboratory Reagent For In Vitro Research Use Only

Not for resale without prior written consent from LifeSpan BioSciences, Inc.

Created on 9/23/2014

© 2014 LifeSpan BioSciences