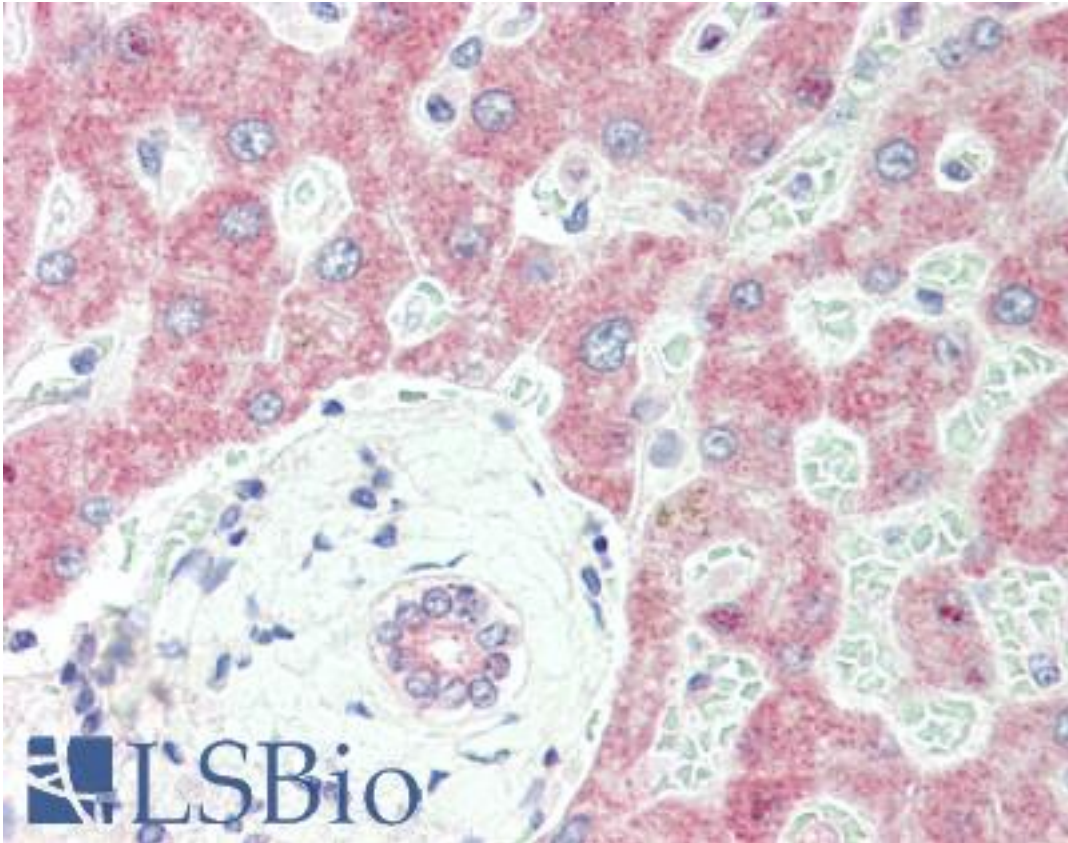


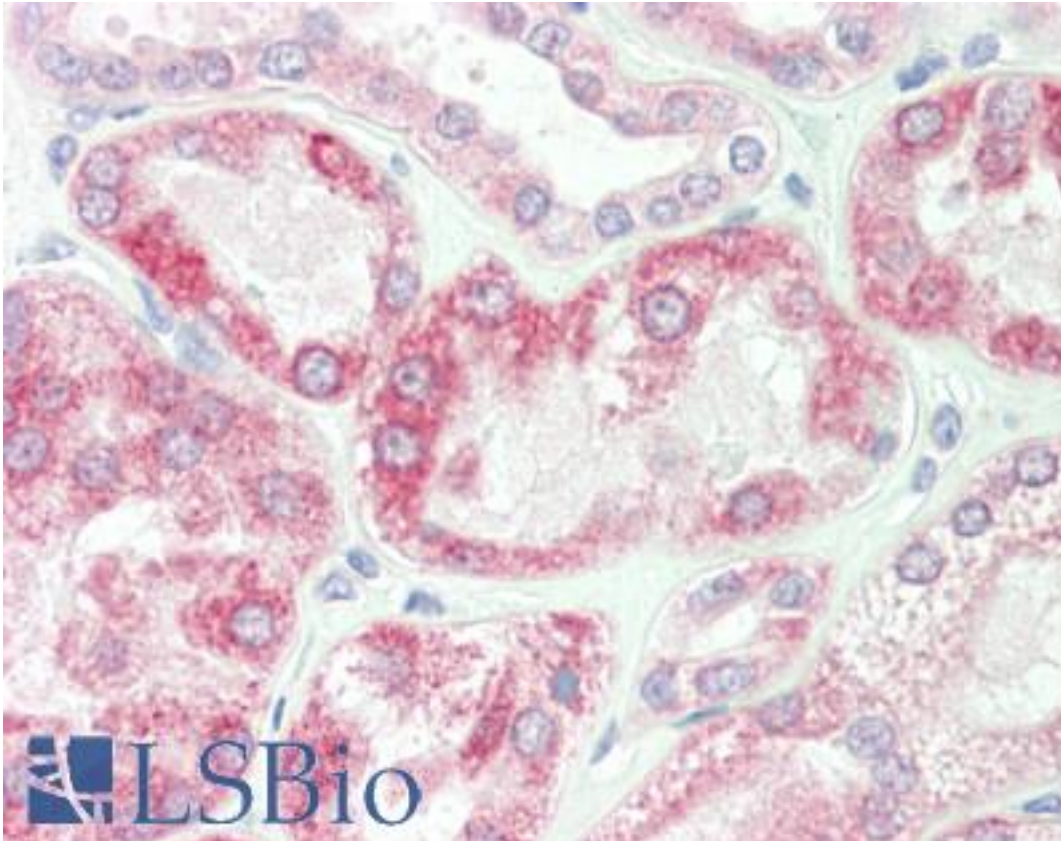
SPRY2 / Sprouty 2 Rabbit anti-Human Polyclonal Antibody - LS-B10618 - LSBio	
<b>CatalogID:</b>	LS-B10618
<b>Validation:</b>	This antibody replaces catalog number LS-C153866. It has been validated for use in the following assays: IHC-P.
<b>Target:</b>	sprouty homolog 2 (Drosophila) (SPRY2)
<b>Synonyms:</b>	SPRY2 Antibody, HSPRY2 Antibody, Protein sprouty homolog 2 Antibody, Sprouty homolog 2 (Drosophila) Antibody, Sprouty 2 Antibody, Spry-2 Antibody, Sprouty (Drosophila) homolog 2 Antibody
<b>Host</b>	SPRY2 antibody was produced in Rabbit
<b>Clonality:</b>	Polyclonal
<b>Isotype:</b>	IgG
<b>Immunogen Species:</b>	SPRY2 / Sprouty 2 antibody was raised against Human
<b>Immunogen:</b>	SPRY2 / Sprouty 2 antibody was raised against peptide from an internal region of human Sprouty 2.
<b>Specificity:</b>	Sprouty-2 antibody reacts with human Sprouty 2 protein. A BLAST analysis was used to suggest reactivity with Sprouty 2 from human, monkey, and orangutan based on a 100% homology with the immunizing sequence. Cross-reactivity with Sprouty2 from other sources has not been determined.
<b>Reactivity:</b>	Human
<b>Purification:</b>	Immunoaffinity purified
<b>Presentation:</b>	0.02 M potassium phosphate, 0.15 M sodium chloride, pH 7.2, 0.01% sodium azide, sterile filtered
<b>Recommended Storage:</b>	Short term 4°C, long term aliquot and store at -20°C, avoid freeze thaw cycles.
<b>Usage Summary:</b>	Anti-Sprouty-2 antibody is suitable for ELISA, IF, and western blotting. Specific conditions for reactivity should be optimized by the end user.
<b>Uses:</b>	IHC - Paraffin (10 µg/ml), Immunofluorescence, Western blot (1:500 - 1:5000), ELISA (Optimal dilution to be determined by the researcher)
<b>Size:</b>	50 µg

**Immunohistochemistry Image:**



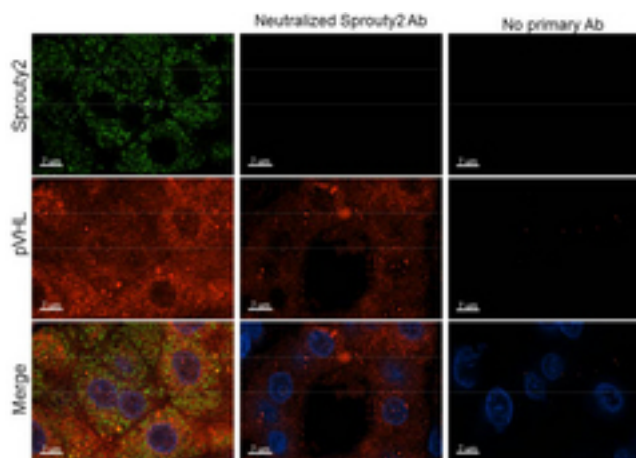
Human Liver: Formalin-Fixed, Paraffin-Embedded (FFPE)

**Immunohistochemistry Image:**



Human Kidney: Formalin-Fixed, Paraffin-Embedded (FFPE)

**Immunohistochemistry Image:**



Immunohistochemistry of Rabbit anti-Sprouty2 antibody. Tissue: human kidney clear cell tumor. Fixation: formalin fixed, paraffin embedded. Antigen retrieval: yes. Primary antibody: Sprouty2 antibody at 1:250. Secondary antibody: Alexa Fluoro 488 secondary at 1:500 overnight at 4C. Localization: nucleus and cytoplasm. Staining: green = sprouty2, Blue = DAPI, red= VHL.

**Requested From:**

Japan

Laboratory Reagent For In Vitro Research Use Only

Not for resale without prior written consent from LifeSpan BioSciences, Inc.

Created on 9/23/2014

© 2014 LifeSpan BioSciences